



**MEADOW VIEW, Epping Lane, Stapleford Tawney,**

**Asking Price £1,595,000**

**MILLERS**  

---

**NEW HOMES**

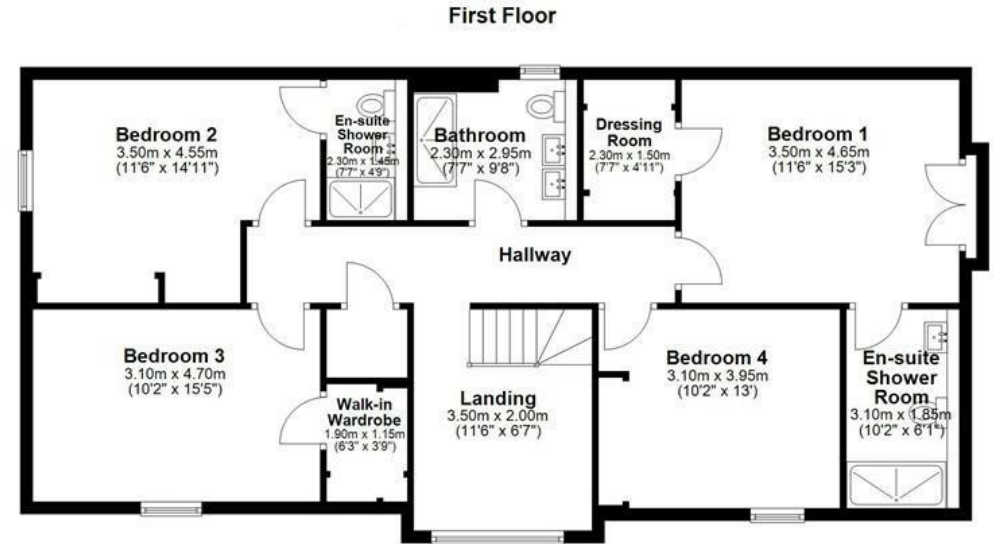
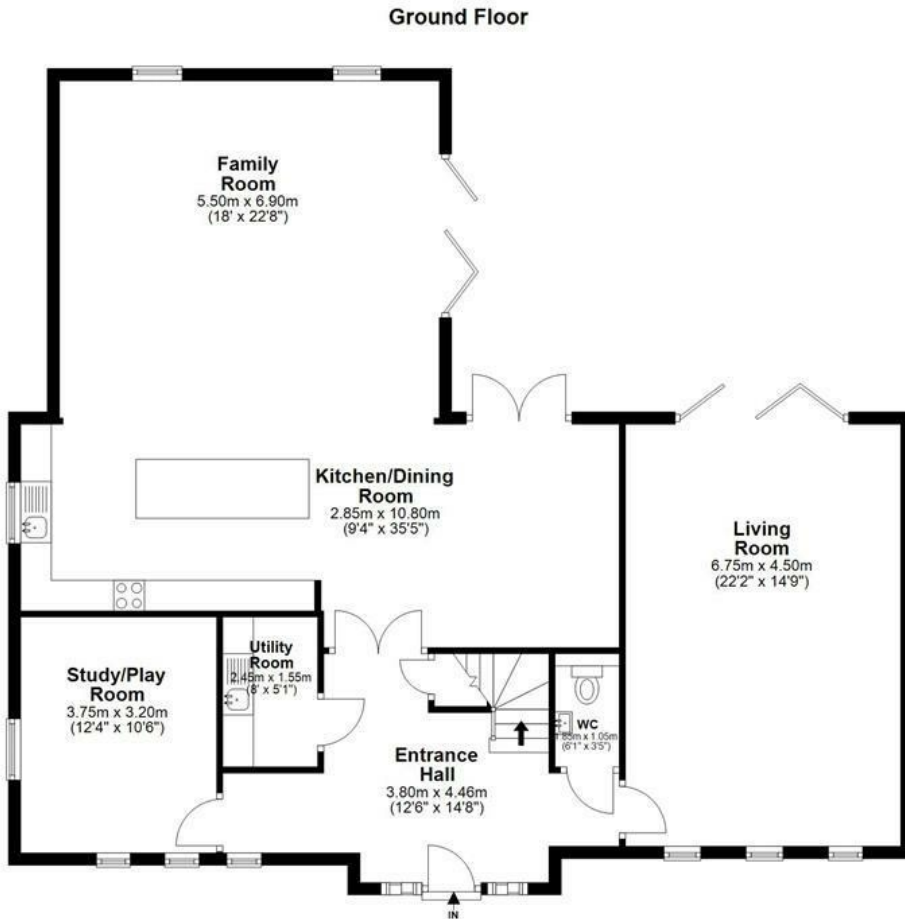


Set behind private security gates, Meadow View is an exclusive development of just four individually designed luxury homes, set within the rolling countryside of the Epping Forest district, close to the villages of Theydon Bois and Stapleford Tawney. The location offers a rare blend of rural tranquillity and convenience, with excellent commuter links into London and local amenities nearby.

**MILLERS**  
NEW HOMES

Plot 3 is an elegant detached four-bedroom home offering approximately 2,774 sq ft of well-proportioned accommodation. The heart of the house is a bespoke Stoneham kitchen, seamlessly opening into a light-filled dining and family area overlooking the formal rear gardens and open countryside. A separate sitting room, study, and utility room provide versatile living and entertaining spaces.

The first floor offers four generous bedrooms, including a principal suite with dressing room and en-suite, additional en-suite bedrooms, and a stylish family bathroom. Outside, the property enjoys a private driveway and walled gardens backing directly onto open fields, creating a peaceful and highly desirable setting.



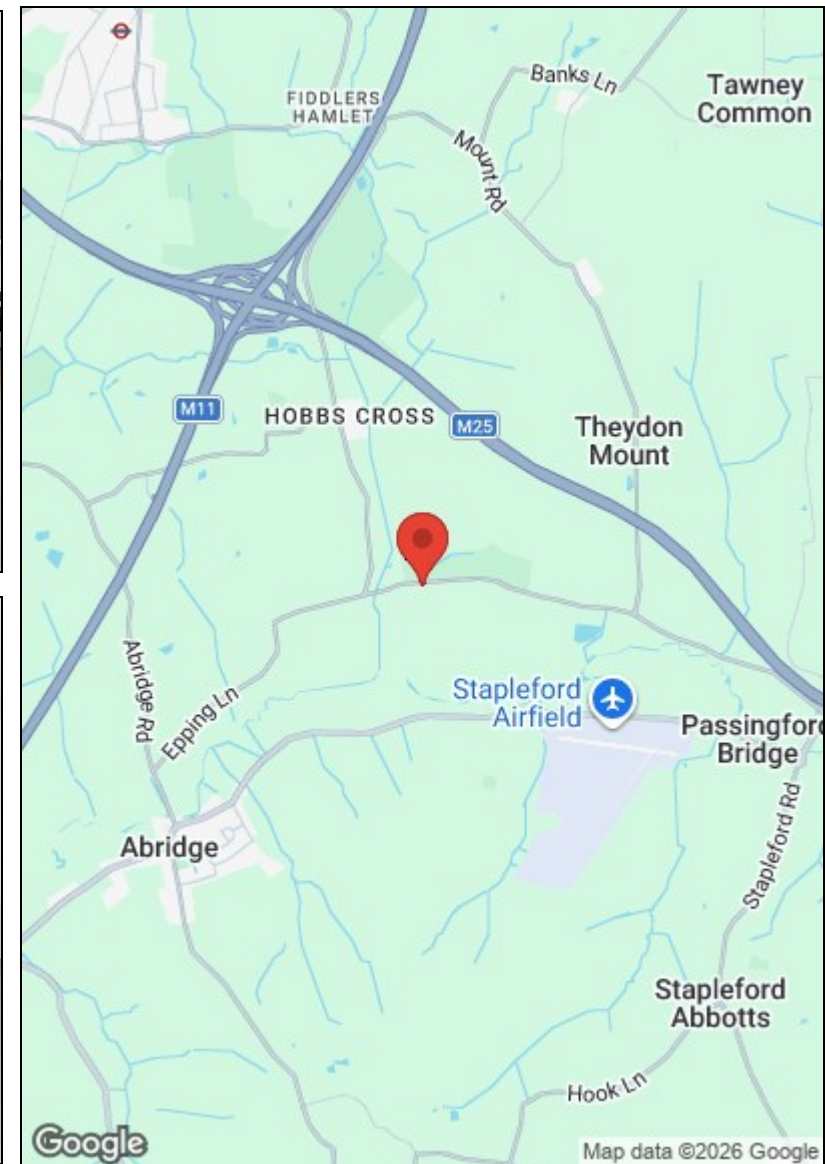
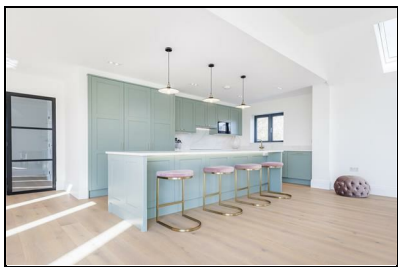
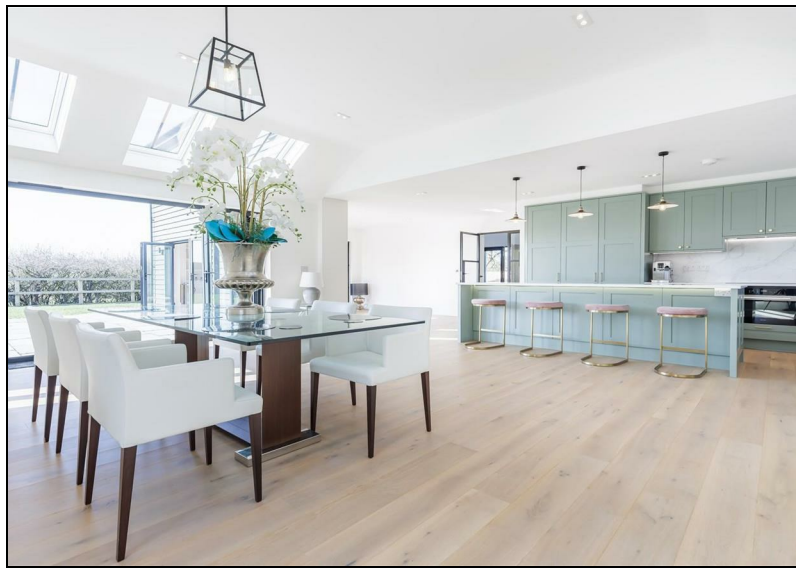
**Meadow Views  
Stapleford Tawney  
Plot 3**

Total area : approx. 257.3 sq metres (2770 sq feet)

Our floor plans are intended to give a general indication of the proposed floor layout only and may vary in the finished building and overall footage

## Directions

From Miller's office at 229 High Street, Epping CM16 4BP continue north along the High Street turning right into Stonards Hill, just past Theydon Grove development and opposite the EFDC Council offices, proceed to the T junction and turn left heading towards Theydon Mount and passing Hill Hall on your right continue to the T junction turn right into Epping Lane and continue until you reach the Meadow Views development on your left-hand side.



**Viewing** Please contact our Millers Office on 01992 560555 if you wish to arrange a viewing appointment for this property or require further information.

These particulars, whilst believed to be accurate are set out as a general outline only for guidance and do not constitute any part of an offer or contract. Intending purchasers should not rely on them as statements of representation of fact, but must satisfy themselves by inspection or otherwise as to their accuracy. No person in this firm's employment has the authority to make or give any representation or warranty in respect of the property.

229 High Street, Epping, Essex, CM16 4BP

Tel: 01992 560555 | Email: [sales@millersepping.co.uk](mailto:sales@millersepping.co.uk)

[www.millers-portfoliohomes.co.uk](http://www.millers-portfoliohomes.co.uk)