



**AN EXCEPTIONAL FIVE/SIX BEDROOM DETACHED FAMILY HOME IN A SOUGHT  
AFTER LOCATION**

Dove Park, Chorleywood, Hertfordshire, WD3 5NY



Dove Park, Chorleywood, Hertfordshire, WD3 5NY

**RECEPTION ROOM • DINING ROOM •  
KITCHEN • UTILITY ROOM & GUEST  
CLOAKROOM • GROUND FLOOR BEDROOM •  
PRINCIPAL BEDROOM WITH EN-SUITE •  
FOUR FURTHER DOUBLE BEDROOMS •  
FAMILY BATHROOM • ATTRACTIVE REAR  
GARDEN • OFF STREET PARKING & A GARAGE**

### Description

An exceptional five-bedroom, two-bathroom detached family home offering approximately 2,539 sq ft of beautifully appointed living space. This impressive property further benefits from a private rear garden, a garage, and a driveway providing off-street parking, all set within easy reach of local amenities, excellent transport links, and highly regarded schools.

Upon entering, a welcoming and spacious hallway with elegant parquet flooring sets the tone, leading through to a stunning 28'7" x 12'11" principal reception room, flooded with natural light via a bay window. A dining room sits to the front of the property, with direct access to the side of the house, ideal for both everyday living and entertaining.

The contemporary kitchen is finished to a high standard, featuring a comprehensive range of fitted units and integrated appliances. A generously proportioned utility room lies just off the kitchen and provides direct access to the rear garden. Completing the ground floor is a versatile bedroom with bi-fold doors opening onto the garden, along with a guest cloakroom.









The first floor offers a superb principal suite with fitted wardrobes and a luxurious en-suite bathroom, complete with both a bath and separate shower. Four further well-proportioned double bedrooms are served by an elegant family bathroom.

The rear garden is predominantly laid to lawn with mature shrubs and hedging, and complemented by a large patio area ideal for outdoor dining and entertaining. To the front, the property features a neat garden, driveway, garage, and convenient side access to the rear.

### Location

Chorleywood Village's facilities include a wide choice of boutique shops, coffee houses and restaurants. The area is also well served for sought after state and private schools for all ages. Leisure facilities include golf courses, cricket, football clubs, horse riding and fitness centres, together with Chorleywood Common and Rickmansworth Aquadrome, providing acres of outdoor space for walks and further activities. The Metropolitan and Main lines at Chorleywood Station offer a frequent service into London and beyond. The M25 is easily accessible via Junctions 17 and 18.

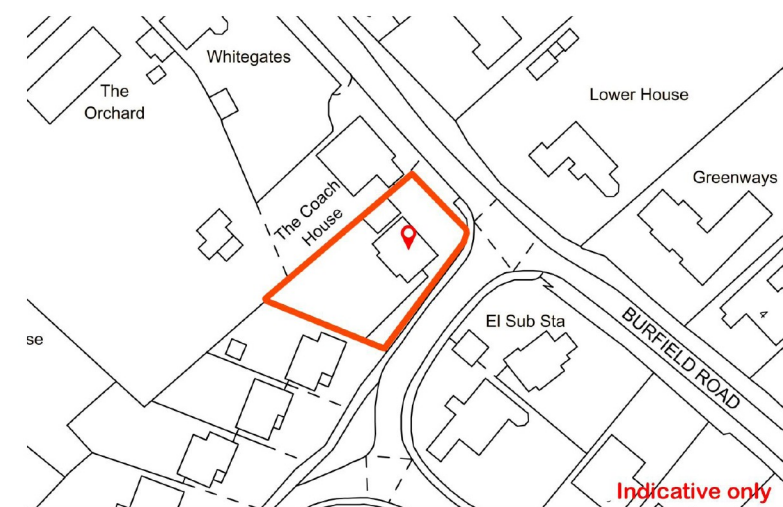
### Additional Information

Tenure: Freehold

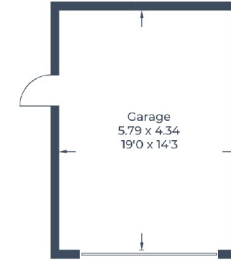
Local Authority: Three Rivers District Council

Council Tax Band: G Energy Efficiency Rating: C

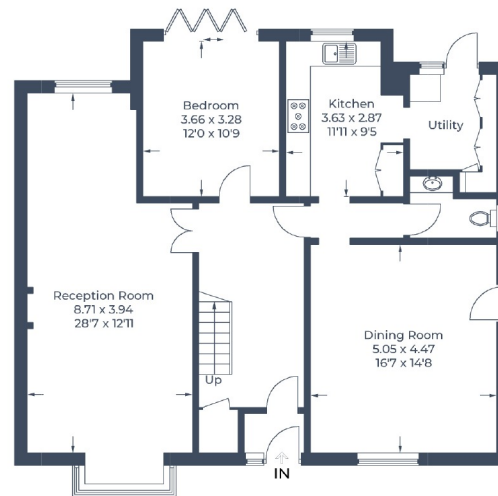
For additional information, please refer to [www.robsonswb.com](http://www.robsonswb.com) or call us on: 01923 285525.



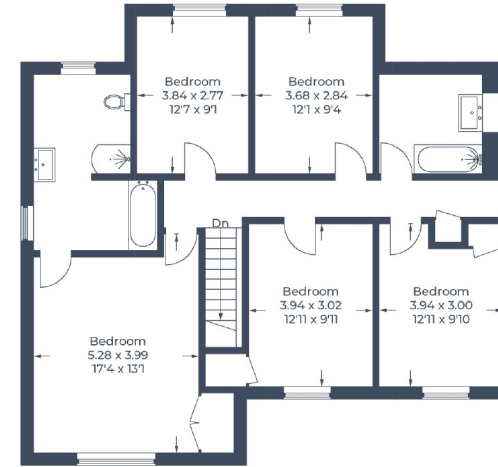
Approximate Gross Internal Area  
Ground Floor = 109.4 sq m / 1,177 sq ft  
First Floor = 101.4 sq m / 1,091 sq ft  
Garage = 25.2 sq m / 271 sq ft  
Total = 236.0 sq m / 2,539 sq ft



(Not Shown In Actual Location / Orientation)



Ground Floor



First Floor

Illustration for identification purposes only,  
measurements are approximate, not to scale.  
© CJ Property Marketing Produced for Robsons

**ROBSONS**

2 New Parade, Chorleywood, Hertfordshire, WD3 5NJ  
Tel: 01923 285525 Email: [chorleywood@robsonswb.com](mailto:chorleywood@robsonswb.com)

[www.robsonswb.com](http://www.robsonswb.com)

SCAN TO VISIT



OUR WEBSITE

Important notice: Robsons, their clients and any joint agents give notice that 1: They are not authorised to make or give any representations or warranties in relation to the property either here or elsewhere, either on their own behalf or on behalf of their client or otherwise. They assume no responsibility for any statement that may be made in these particulars. These particulars do not form part of any offer or contract and must not be relied upon as statements or representations of fact. 2: Any areas, measurements or distances are approximate. Plot sizes and dimensions are taken from Promap and are approximate. The text, photographs and plans are for guidance only and are not necessarily comprehensive. It should not be assumed that the property has all necessary planning, building regulation or other consents and Robsons have not tested any services, equipment or facilities. Purchasers must satisfy themselves by inspection or otherwise.