



Your Logo

Carron Crescent, York, YO24 2XY

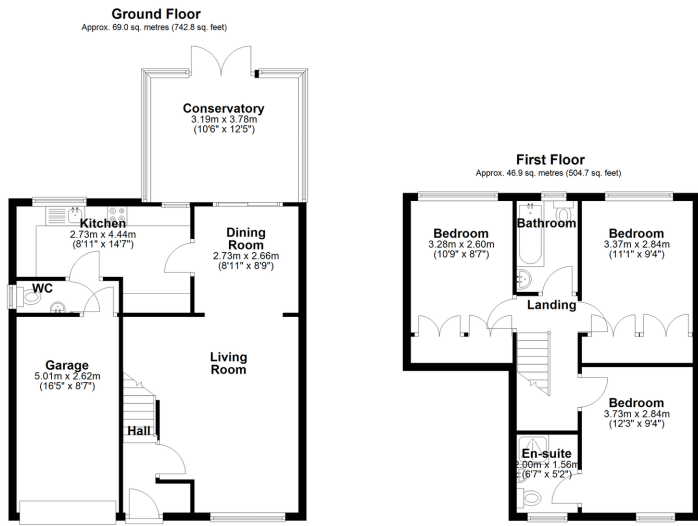
Guide Price £400,000

3 2 2



- Extended Detached Family Home
- Three Double Bedrooms
- Modern Kitchen with Integral Appliances
- Driveway For Three Cars
- Ample Storage Throughout
- Open Plan Living Space
- Ensuite & Family Bathroom
- Private Rear Garden
- Attached Garage
- Sought After Cul-de-Sac Location





AL1201 - An extended three bedroom family home within the heart of Woodthorpe. Expertly modernised throughout with a large driveway, garage and private rear garden.

