



**3104 25 Crossharbour Plaza, London, E14 9UE**

**£815 Per week**

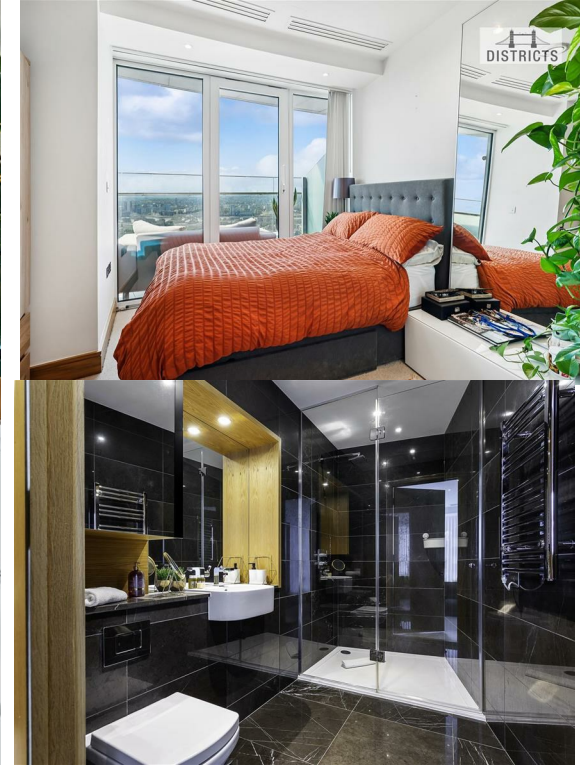
 2  2  0  B



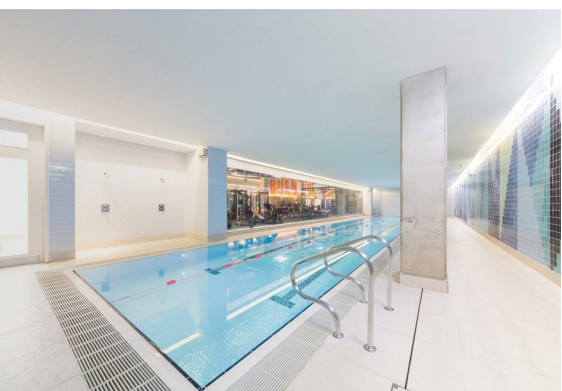
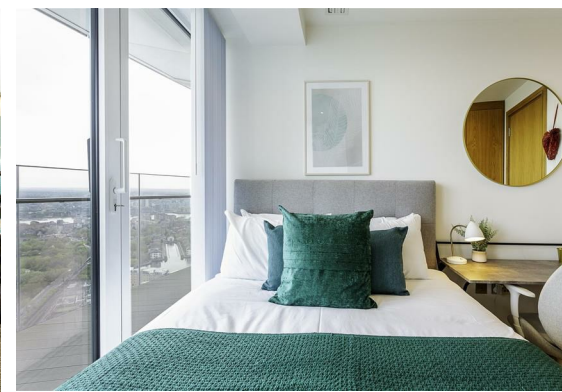
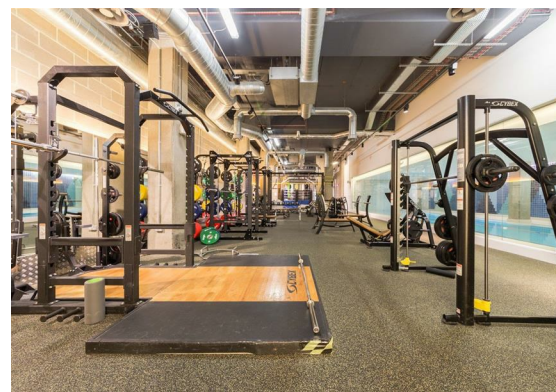
Districts London are proud to present to you this exceptional apartment located in the iconic Arena Tower, one of Canary Wharf's most sought after developments. Offering you a surreal combination of luxury living, world-class amenities, and breathtaking views of the O2 Arena.

Thoughtfully designed and elegantly finished, the apartment boasts oak flooring, programmable mood lighting, underfloor heating, and a bespoke kitchen equipped with fully integrated Smeg appliances. The bathrooms are appointed with exquisite natural marble, cultivating an ambiance of understated elegance and refined sophistication throughout. The residence is fully furnished to an exceptional standard, with every detail meticulously curated to ensure both comfort and timeless style. Residents are afforded the privilege of a 24-hour concierge service, alongside exclusive access to an array of premium leisure facilities, including a fully equipped gymnasium, swimming pool, spa, and a dedicated boxing suite.

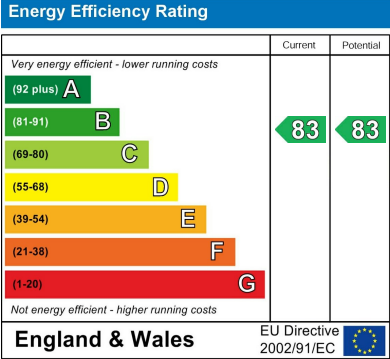
Superbly situated just moments from Crossharbour and South Quay DLR stations, and within comfortable walking distance of Canary Wharf, the property enjoys seamless connectivity to the City and the wider Capital.











These particulars, whilst believed to be accurate are set out as a general outline only for guidance and do not constitute any part of an offer or contract. Intending purchasers should not rely on them as statements of representation of fact, but must satisfy themselves by inspection or otherwise as to their accuracy. No person in this firms employment has the authority to make or give any representation or warranty in respect of the property.