



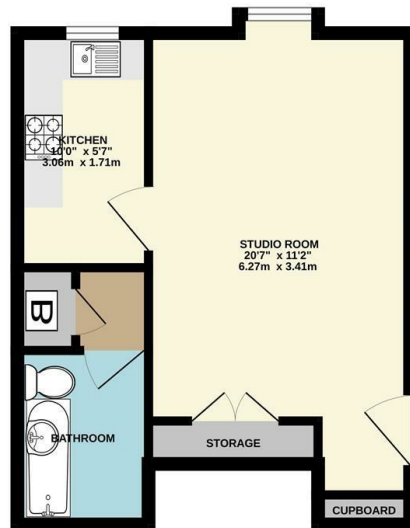
Kestrel House, Farnham GU9 8UY

- Studio Apartment
- Living Room/Bedroom
- Gas Central Heating
 - UNFURNISHED
- EPC Rating C Council Tax Band B
- South side of Farnham
- Kitchen with White Goods
- Allocated Parking Space
- Available from Early July 2026
- Holding Deposit £223 Security Deposit £1119

£970 Per Calendar Month

Local Authority **Waverley**
Borough Council
Council Tax Band **B**
EPC Rating **C**

337 sq.ft. (31.3 sq.m.) approx.



TOTAL FLOOR AREA : 337 sq ft. (31.3 sq.m.) approx.
Whilst every attempt has been made to ensure the accuracy of the floorplan contained here, measurements of doors, windows, rooms and any other items are approximate and no responsibility is taken for any error, omission or mis-statement. This plan is for guidance purposes only and should be used as such by any prospective purchaser. The services, systems and appliances shown have not been tested and no guarantee as to their quantity or efficiency can be given.
Made with Metriplan 12/2020



Greenwood & Co Office
The Wool House, Bear Lane, Farnham,
Surrey, GU9 7LG

Contact
01252734734
info@greenwood-
property.co.uk

Agents Note: Whilst every care has been taken to prepare these particulars, they are for guidance purposes only. All measurements are approximate and for general guidance purposes only and whilst every care has been taken to ensure accuracy, they should not be relied upon and potential buyers/tenants are advised to recheck the measurements.