



Mauritius House, Balliol Grove, Maidstone, Kent, ME15 9WQ
Offers In The Region Of £170,000



****NO FORWARD CHAIN**** TWO BEDROOM APARTMENT IN WITHIN WALKING DISTANCE OF LOCAL AMENITIES.

This modern two-bedroom second-floor apartment is in excellent condition throughout, situated in a quiet development close to local amenities and just 2.5 miles from Maidstone town centre. Ideal for first-time buyers or investors, the property offers a bright and spacious open-plan kitchen/living area with Juliette balcony, perfect for entertaining and unwinding. The sleek kitchen features cream gloss units, wood-effect worktops, and integrated appliances, including an oven, hob, extractor hood, washer/dryer, and fridge/freezer.

The main bedroom benefits from a large fitted wardrobe, while the second bedroom is also a generous double. A stylish bathroom with a white suite and shower over the bath completes the accommodation. The property also offers a secure entry system, two useful storage cupboards, communal gardens, an allocated parking space, and visitor bays.

Mauritius House is located just off Sutton Road, providing easy access to Maidstone's excellent shopping, dining, and entertainment options, including the Mall, Fremlin Walk, and Mote Park.

Maidstone offers three train stations—Maidstone East, West, and Barracks—with services to London and beyond, including High-Speed Rail links to London.

Viewing is highly recommended. Call Page and Wells Loose Office today and book your viewing to avoid missing out.



INTERNAL

Hallway

Kitchen/Diner 21'2" x 12'5" (6.47 x 3.79)

Living Room 21'3 x 12'5 (6.48m x 3.78m)

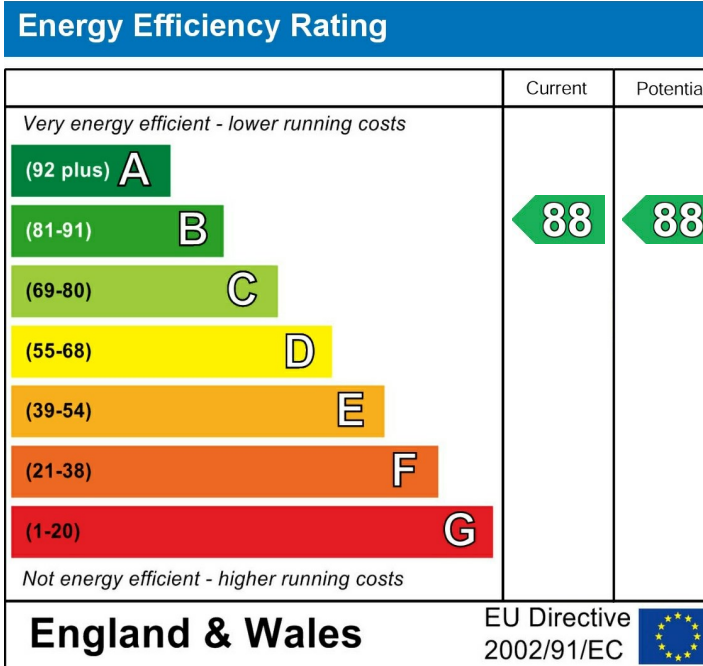
Bedroom 1 11'0" x 10'10" (3.37 x 3.32)

Bedroom 2 11'0" x 10'1" (3.36 x 3.09)

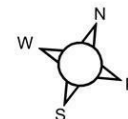
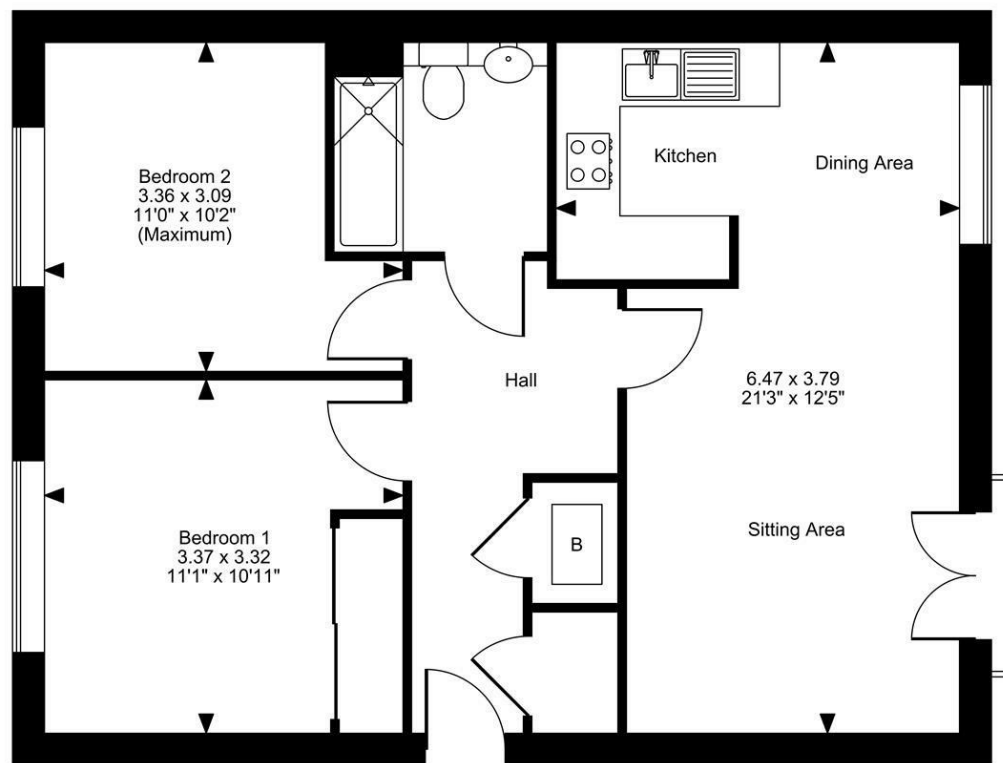
Bathroom

EXTERNAL

Allocated Parking



Mauritius House, Balliol Grove, Maidstone, Kent
Approximate Gross Internal Area
601 Sq Ft/56 Sq M



First Floor

FOR ILLUSTRATIVE PURPOSES ONLY - NOT TO SCALE

The position & size of doors, windows, appliances and other features are approximate only.
 © ehous. Unauthorised reproduction prohibited. Drawing ref. dig/8636212/SS

