



Guide Price
£550,000

Freehold

4x  1x  2x 

**Ashurst Drive, Ilford,
Essex, IG2**

OVER 60?

Secure this property
for up to **59% less!**

 **DOUGLAS
ALLEN**
Helping you move forwards



Main features

- Spacious terraced house with entrance porch
- First floor bathroom
- Second floor cloakroom
- Walking distance to shops & restaurants
- Bus & road links to Newbury Park station

Accommodation

GROUND FLOOR

Entrance Porch
 Entrance Hall
 Lounge: 12'6 x 12'6 (3.81m x 3.81m)
 Dining Room: 13'5 x 12'5 (4.09m x 3.79m)
 Kitchen: 10'0 x 6'5 (3.05m x 1.96m)

FIRST FLOOR

Landing
 Bedroom 1: 15'2 x 10'8 (4.63m x 3.25m)
 Bedroom 2: 10'6 x 10'3 (3.20m x 3.13m)
 Bedroom 3: 7'3 x 7'0 (2.21m x 2.14m)
 Bathroom
 Separate Toilet

SECOND FLOOR

Bedroom 4: 15'7 x 13'0 (4.75m x 3.97m)
 Cloakroom

OUTSIDE

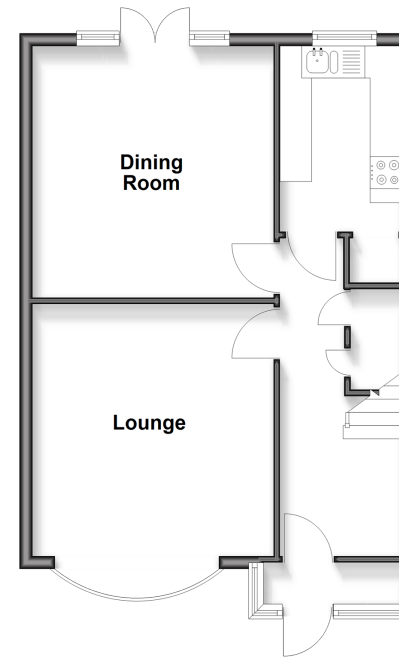
Off Street Parking
 Rear Garden

Call Barkingside - 020 8551 4025 ■ douglasallen.co.uk

- A private rental licensing scheme applies to some properties in this area, please check with the Local Authority before proceeding
- Through a Homewise Home For Life Plan people aged 60+ can secure this property for up to 59% less, by purchasing a Lifetime Lease

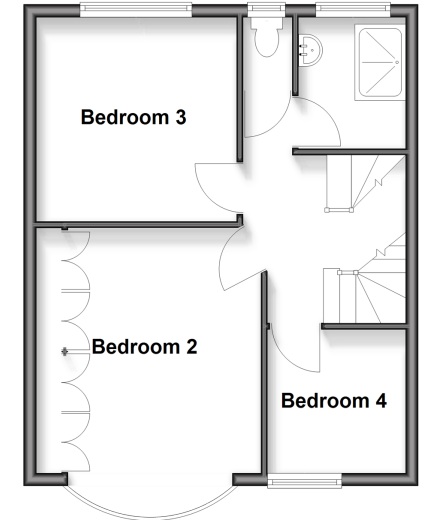
Ground Floor

Approx. 48.5 sq. metres (522.2 sq. feet)



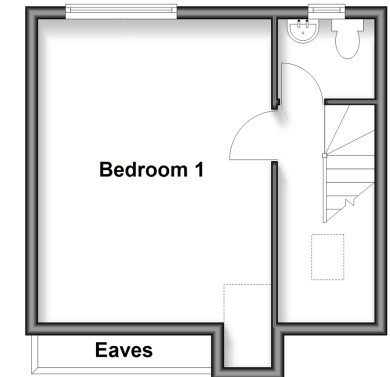
First Floor

Approx. 41.8 sq. metres (450.3 sq. feet)



Second Floor

Approx. 25.7 sq. metres (276.4 sq. feet)



52016994/20260411/CN/NK