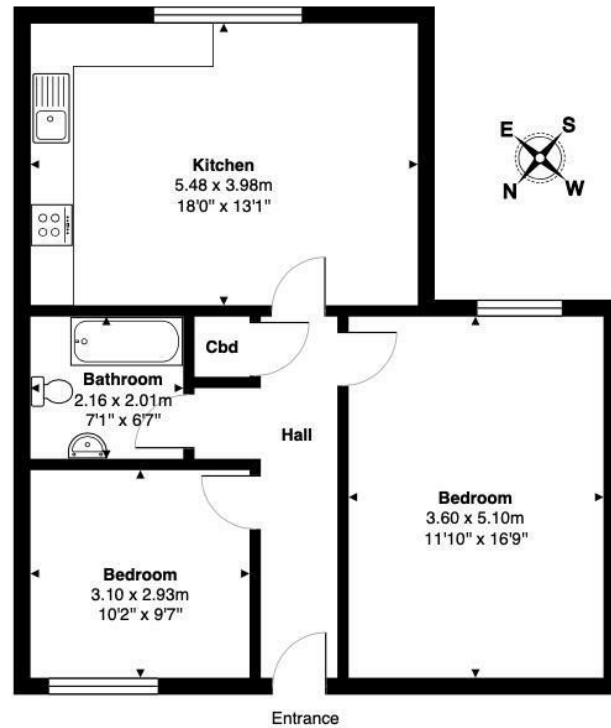
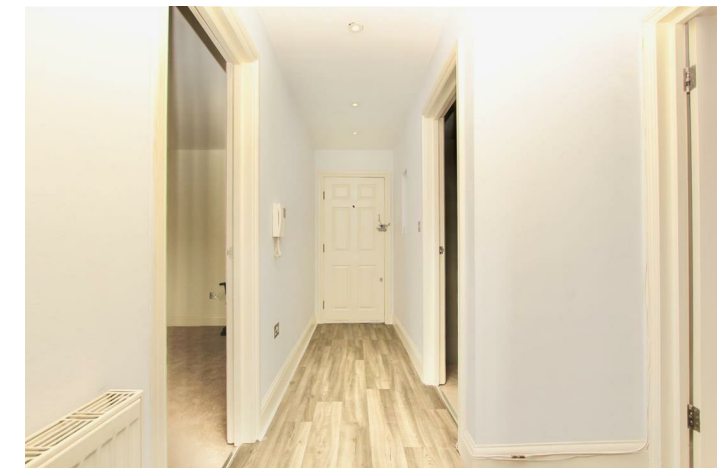


Flat 4, 25, Frome Road, London, N22 6BP



Total Area: 64.0 m² ... 689 ft²

All measurements are approximate and for display purposes only



Energy Efficiency Rating		Current	Potential
Very energy efficient - lower running costs			
(92 plus) A			
(81-91) B			
(69-80) C		75	76
(55-68) D			
(39-54) E			
(21-38) F			
(1-20) G			
Not energy efficient - higher running costs			
England & Wales		EU Directive 2002/91/EC	

Contact Us:

02072 490272

E-mail us:

sales@michaelnaik.com

Visit our website:

www.michaelnaik.com

Agents Note: Whilst every care has been taken to prepare these particulars, they are for guidance purposes only. All measurements are approximate and are for general guidance purposes only and whilst every care has been taken to ensure their accuracy, they should not be relied upon and potential buyers are advised to recheck the measurements.

£1,900 PER MONTH

- Two Bedroom Apartment
- First Floor
- Close To High Street
- 689 sq. ft. Available Now
- Furnished



About The Property...

This generously sized apartment is set on the first floor of a small purpose built block, just moments away from both excellent transport links and the local high street which offers Wood Green shopping centre in addition to a wide collection of amenities and restaurants.

The apartment offers spacious accommodation , with a large open plan kitchen/lounge, followed by two bedrooms and a modern, fully fitted bathroom.

Key Information

Available Now

Offered

Reservation Deposit - £438 (forms part of security deposit)

Security Deposit - £2,190

Council Tax - Haringey - Band D

