



## Ferndale, Dartmouth

Guide Price **£300,000**

An attractive Edwardian end of terrace home with gardens and private parking.

Bedrooms: 3 | Bathrooms: 1 | Receptions: 2

- No chain
- Fabulous family home
- Close to town centre
- Large reception room
- Two bedrooms
- Loft room with balcony
- Double glazing
- Gas central heating
- Gardens
- Private parking

**Tenure:** Freehold

**Property Type:** End of Terrace House

**Bedrooms:** 3 | **Bathrooms:** 1 | **Receptions:** 2

**Council Tax Band:** D

7 Ferndale is an attractive end-terrace Edwardian home which will make a fabulous family home with some updating required. The accommodation is versatile and spacious and set over three floors to include the loft room.

The ground floor features a large open-plan living/dining room with attractive bay window to the front aspect creating a sociable living space. The kitchen has been extended and modernised offering a great environment for everyday living including built in oven, hob and extractor with a breakfast and skylight. There is also a useful cloakroom.

On the first floor are two generous double bedrooms and a particularly spacious, well-appointed family bathroom.

The second floor has a further double aspect loft room, an ideal space for a home office, hobby room with a balcony over looking the southerly rear garden,

To the rear, the property enjoys terraced gardens leading to a parking area with space for two vehicles, an increasingly valuable feature for a property so close to the town centre.

Additional benefits include double glazing, gas-fired combination central heating system with no onward chain.

**Tenure:** Freehold.

**Note.** There is a right of way through the parking area for the adjoining neighbours.

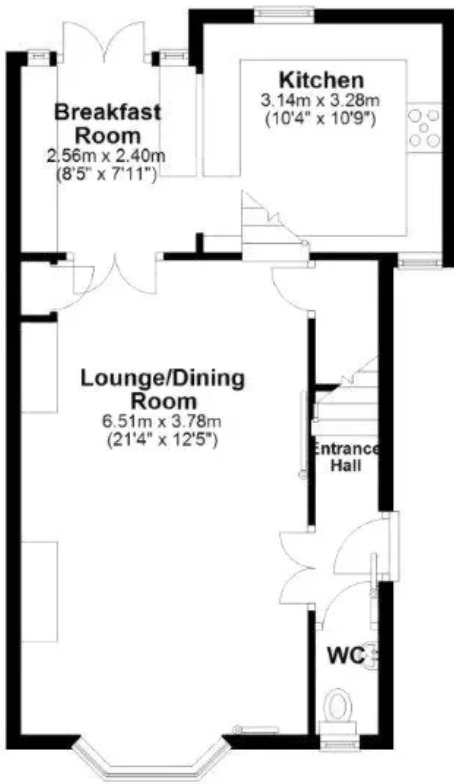
**EPC:** E

**Council Tax Band:** D



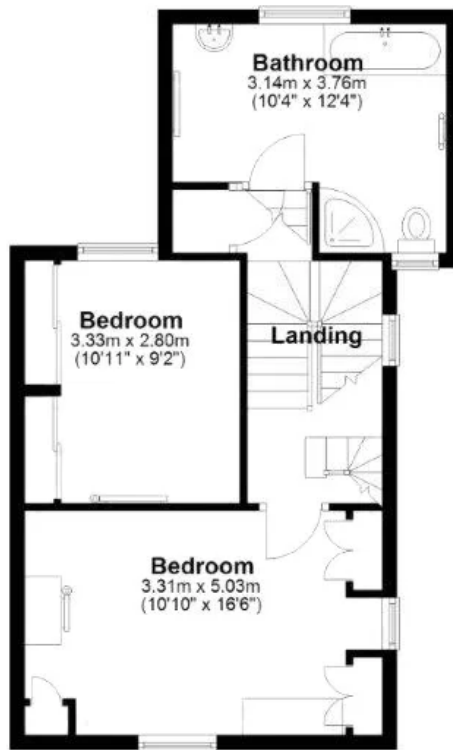
### Ground Floor

Approx. 48.4 sq. metres (520.5 sq. feet)



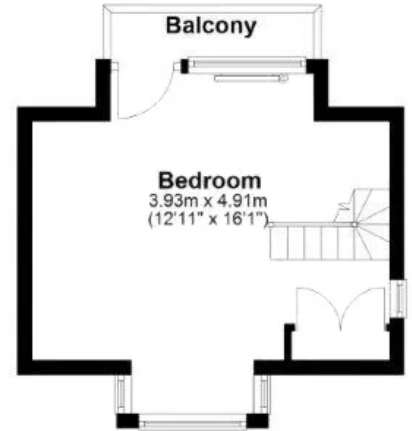
### First Floor

Approx. 43.5 sq. metres (468.6 sq. feet)



### Second Floor

Approx. 19.1 sq. metres (205.9 sq. feet)



Total area: approx. 111.0 sq. metres (1194.9 sq. feet)



Score	Energy rating	Current	Potential
92+	A		
81-91	B		
69-80	C		74 C
55-68	D		
39-54	E	52 E	
21-38	F		
1-20	G		

## Millard Cook

6 Newcomen Road, Dartmouth, TQ6 9AF

01803 832361

info@millardcook.com

https://millardcook.com/



IMPORTANT NOTICE 1. These particulars are for guidance only. They are prepared and issued in good faith and fair description of the property. They do not constitute part of an offer or contract. 2. Any description or information given should not be relied on as a statement or representation of fact that the property or its services are in good condition. Millard Cook has no authority to make or give any representation or warranty whatsoever in relation to the property. 3. The photographs show only certain parts and aspects of the property at the time they were taken. CGI on images maybe used. Any areas, measurements or distances given are approximate only. 4. Descriptions of a property are inevitably subjective, and the descriptions contained are used in good faith as an opinion and not by way of statement of fact and queries need clarifying before viewing, please do not hesitate to contact Millard Cook. MONEY LAUNDERING REGULATIONS - To a sale being agreed, prospective purchasers will be required to produce identification documents to comply with Money Laundering regulations.