

Battledown Mead

Cheltenham GL52 6QA



Battledown Mead, Battledown, Cheltenham GL52 6QA

A three bedroom semi detached house in need of modernising located in the desired location of Battledown. This property comprises of entrance hallway with under stair storage, to the right is the living room and dining room, straight through is the kitchen also leading to a utility space, WC, door into the garage and to rear garden. Upstairs takes you to two double bedrooms and one single bedroom, bathroom and seperate WC. This property also benefits from off road parking, garage with power, a front and rear garden. This property also has a local pub nearby, supermarket and easy access to Cleeve Hill to enjoy fantastic views over Cheltenham.





ENTRANCE HALL

Doors leading to kitchen, living room and under stair storage. Stairs to first floor landing.

LIVING ROOM

18' 8" x 11' 0" (5.69m x 3.35m) Window to front. x2 Radiators. Fireplace. Sliding doors into dining room.

DINING ROOM

10' 4" x 9' 3" (3.15m x 2.82m) Patio doors leading to rear garden. Radiator.

KITCHEN

Window to rear. Range of wall and base units. Splash back tiles. Integrated oven, hob and extractor fan. Door leading to walkway to WC, utility space/storage, rear garage access and rear garden access.





FIRST FLOOR LANDING

Doors leading to three bedrooms, bathroom and WC. Loft access.

BEDROOM ONE

17' 0" x 10' 10" (5.18m x 3.3m) Window to front. Radiator.

BEDROOM TWO

12' 0" x 10' 10" (3.66m x 3.3m) Window to rear. Built in wardrobes. Radiator.

BEDROOM THREE

8' 4" x 7' 9" (2.54m x 2.36m) Window to front. Built in storage cupboard. Radiator.

BATHROOM

Window to rear. Corner bath. Shower cubicle. Hand wash basin. Heated towel rail. Storage cupboard.

WC

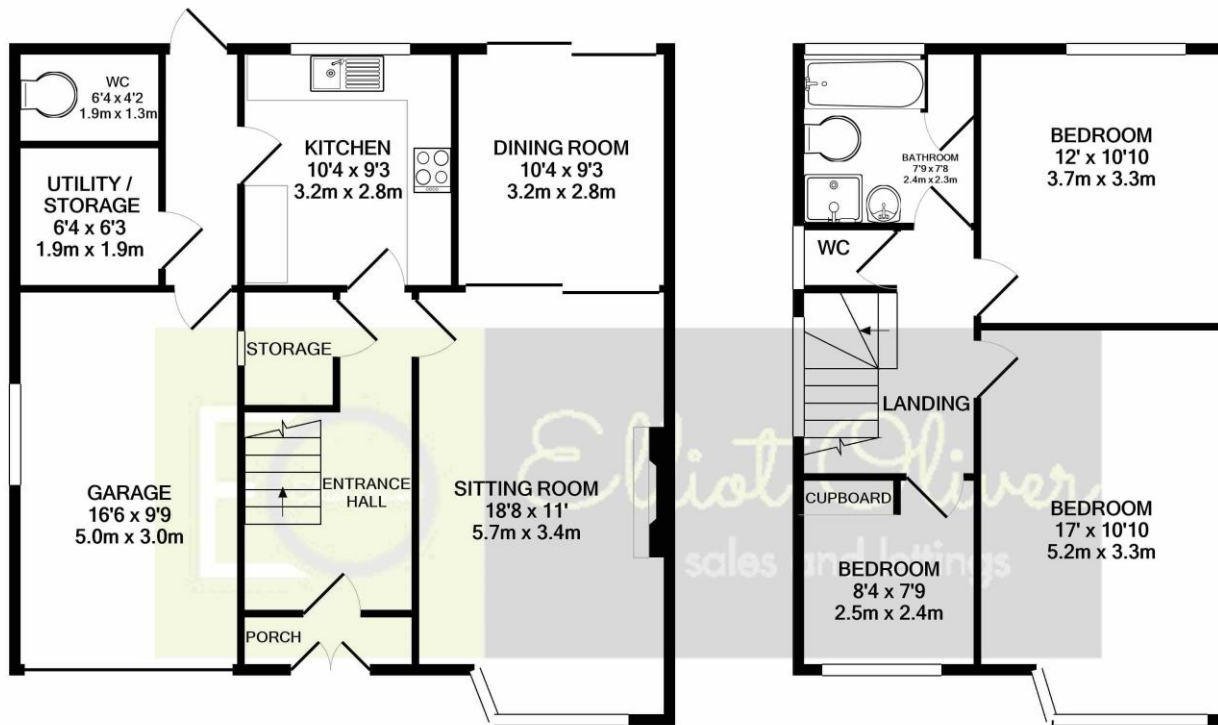
Low level WC.

GARAGE

16' 6" x 9' 9" (5.03m x 2.97m) Window to side. Double gates into garage. Rear door into property. Power supply.

OUTSIDE

Off road parking. Front and rear garden. Rear garden with shed and greenhouse.



GROUND FLOOR
APPROX. FLOOR
AREA 777 SQ.FT.
(72.2 SQ.M.)

1ST FLOOR
APPROX. FLOOR
AREA 515 SQ.FT.
(47.8 SQ.M.)

TOTAL APPROX. FLOOR AREA 1292 SQ.FT. (120.0 SQ.M.)

Whilst every attempt has been made to ensure the accuracy of the floor plan contained here, measurements of doors, windows, rooms and any other items are approximate and no responsibility is taken for any error, omission, or mis-statement. This plan is for illustrative purposes only and should be used as such by any prospective purchaser. The services, systems and appliances shown have not been tested and no guarantee as to their operability or efficiency can be given
Made with Metropix ©2019

Agents Note: Whilst every care has been taken to prepare these sales particulars, they are for guidance purposes only. All measurements are approximate and for general guidance purposes only and whilst every care has been taken to ensure their accuracy, they should not be relied upon and potential buyers are advised to recheck the measurements



OFFICE

101 Promenade,
Cheltenham,
Gloucestershire, GL50
1NW
info@elliottoliver.co.uk