

Boardwalk

St. Lukes

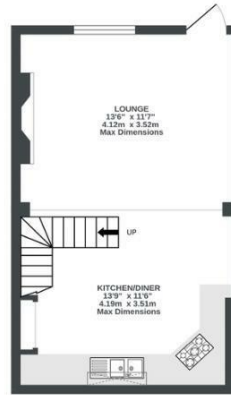
VICTORIA PARK, BRISTOL

St Lukes Crescent VICTORIA PARK

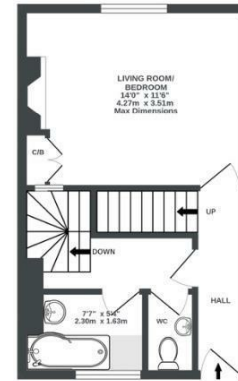
APPROXIMATE FLOOR AREA
114.8 SQM / 1235 SQFT



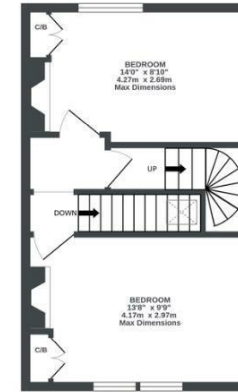
LOWER GROUND FLOOR
309 sq ft. (28.7 sq.m.) approx.



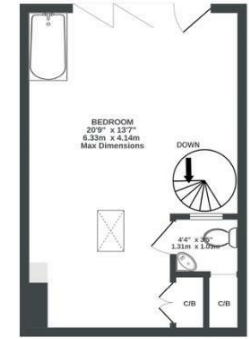
GROUND FLOOR
318 sq ft. (29.5 sq.m.) approx.



1ST FLOOR
330 sq ft. (30.5 sq.m.) approx.



2ND FLOOR
279 sq ft. (25.9 sq.m.) approx.



Illustrations are for reference purposes only, measurements are approximate, not to scale.

Boardwalk

St. Lukes

VICTORIA PARK, BRISTOL



£515,000



3 Bedrooms



BS3 4RZ



2 Bathrooms

"When we bought this house I knew it was going to need work, but the beautiful leafy park views and the amazing murals on the rest of the terrace made it feel so special already! I can't express enough how much of an incredible journey it has been to restore character to this home, and turn it into a lived in piece of art. Cooking in the muralled kitchen garden, watching wrens make nests in the oasis courtyard and waking up to park views from bed have been absolute highlights and I'm going to miss it!"

