



ANDREW  
EXELBY  
ESTATE AGENTS

## Harbour Mews, Sennen Cove

£525,000



THREE BED END OF TERRACE COTTAGE \*\* METRES FROM SENNEN COVE BEACH \*\* GARAGE  
PARKING \*\* SEA VIEWS \*\* CHAIN FREE



## Key Features

- END OF TERRACE 3 BED HOUSE
- GLORIOUS SEA AND BEACH VIEWS
- LESS THAN 100 METRES FROM COVE
- LOFT SPACE IDEAL FOR CONVERSION
- BUILT IN 2000 WITH RECENT IMPROVEMENTS
- FRONT PATIO SPACE FOR SEATING
- SINGLE GARAGE FOR PARKING
- LEASEHOLD: 976 YEARS REMAINING
- EPC - TBC
- COUNCIL TAX BAND - BUSINESS RATES

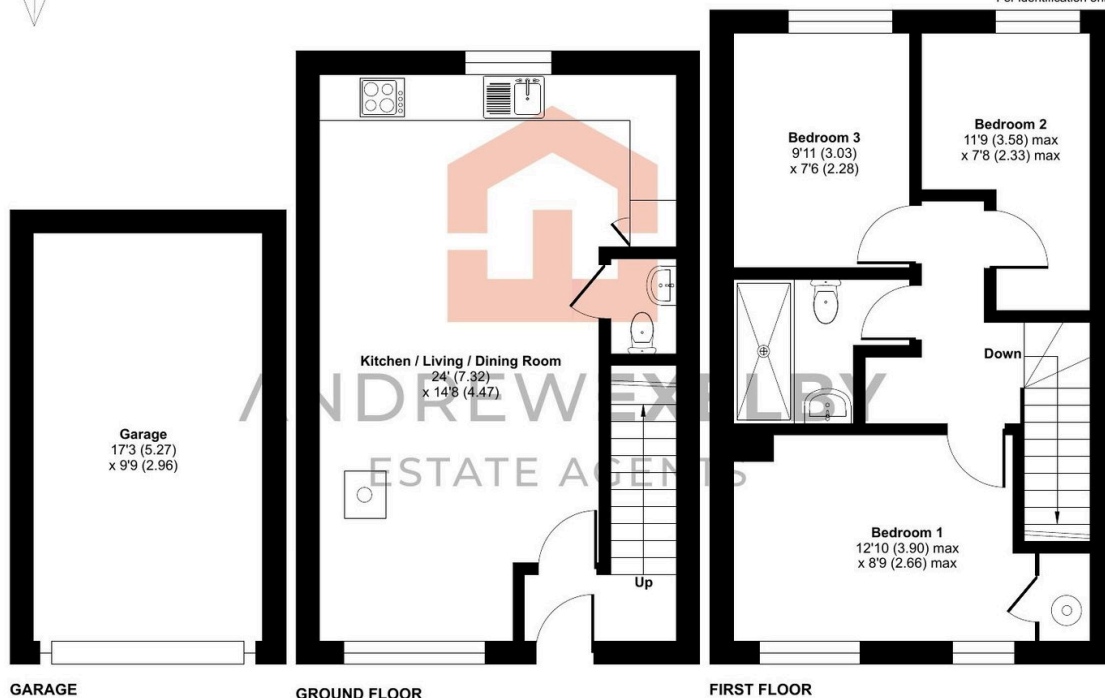
## The Harbour Mews, Sennen Cove, Penzance, TR19

Approximate Area = 753 sq ft / 69.9 sq m

Garage = 168 sq ft / 15.6 sq m

Total = 921 sq ft / 85.5 sq m

For identification only - Not to scale



Floor plan produced in accordance with RICS Property Measurement 2nd Edition, Incorporating International Property Measurement Standards (IPMS2 Residential). © nchecom 2026. Produced for Andrew Exelby Estate Agents. REF: 1433959