



Price

£300,000

Leasehold

3x  2x  1x 

Bradstow House, St.

Peter's Road,

Broadstairs, Kent, CT10

Wards
Helping you move forwards



Main features

- Ready to move into
- Immaculately presented throughout
- Open plan social living space
- High ceilings and bright rooms and flexible living
- Ideal location close to Broadstairs train station, town, shops, and schools

Accommodation

FIRST FLOOR

Entrance hall

Kitchen/Lounge/Diner: 24'9 x 14'8 (7.55m x 4.47m)

Bathroom : 8'0 x 6'9 (2.44m x 2.06m)

Bedroom 1 : 14'9 x 13'6 (4.50m x 4.12m)

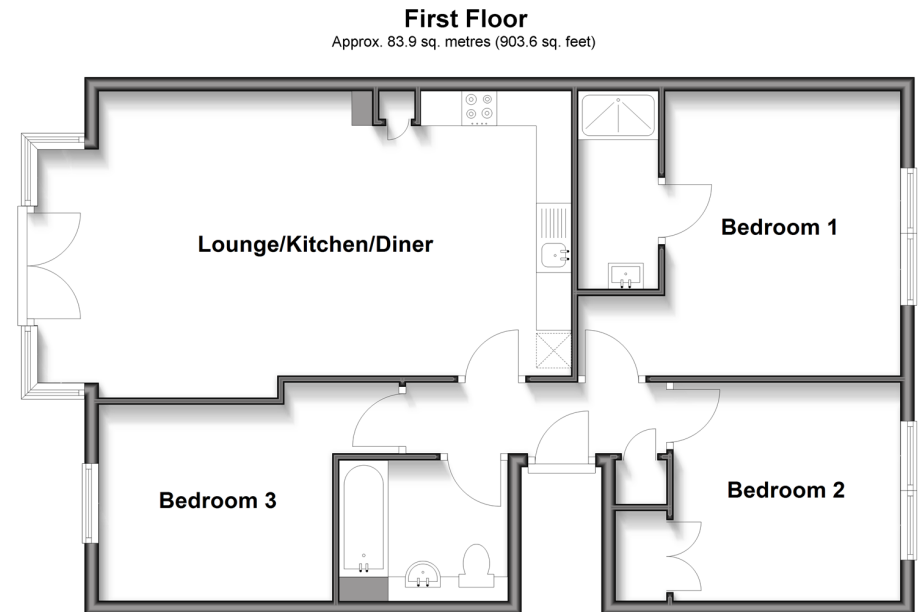
en suite shower

Bedroom 2: 10'7 x 10'3 (3.23m x 3.13m)

Bedroom 3: 11'0 x 9'4 (3.36m x 2.85m)

OUTSIDE

Garden



Call Broadstairs - 01843 602546 ■ wardsof Kent.co.uk

- Legal advice should be taken to verify fixtures/fittings, planning, alterations and/or lease details
- Appliances & services are untested, dimensions are approximate and floor plans are not to scale