



Marylebone Road, NW1

£3,000 Per calendar month

A well-presented one bedroom apartment on the ground floor of this portered building close to Baker Street station and Regent's Park.

There are numerous transport links with Baker Street, Edgware Road, Regents Park and Great Portland Street underground stations and Marylebone mainline station close by.

Features

- One Bedroom Apartment
- Separate Kitchen
- Good Sized Reception
- Lift & Concierge
- Residents Gym
- Wooden Flooring



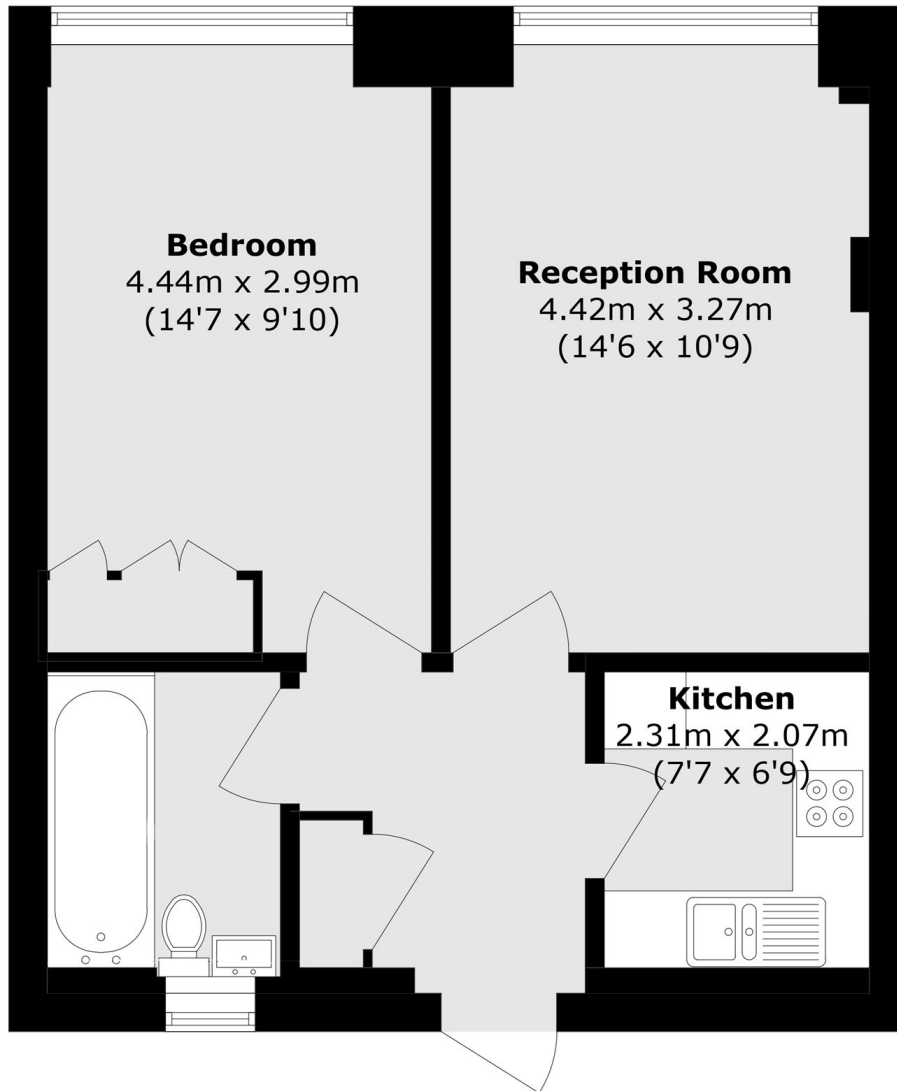
Marylebone Road, NW1

The flat has a good sized reception with space for both living and dining areas, a separate kitchen, one double bedroom with storage and a family bathroom

Marathon House is a modern, portered building close to the open spaces of Regent's Park. The fashionable shops, bars, cafes and restaurants of Marylebone High Street are only a short walk away and there is easy access to the theatres and attractions of the West End.



Marylebone Road, London, NW1



Total area (approx.): 45.9 sq. m (494.0 sq. ft)