



Park Lane Plaza, Park Lane, Liverpool

£875 PCM

This fantastic 2-bedroom apartment is situated in an ultra-stylish, peaceful development which rests just a stone's throw away from all the action of the city centre - the perfect destination for students and working professionals.

This fab property features a bright, open-plan lounge and a kitchen that benefits from tonnes of space - a rarity in city centre apartments. The kitchen has been decked out in a super-slick black and white design and comes complete with an integrated hob - very swish. With a sleek bathroom and two great sized bedrooms to match, this fully furnished property is ready to move into straight away. As an added bonus, your lounge opens up onto a private balcony - where you can experience cracking views of Liverpool first-hand.

The location is pretty top-notch too. A 5 minute walk will get you to Wapping Dock, with Liverpool One just a few minutes further - perfect for working professionals. If you take a quick stroll around your development you'll also find a great range of cafes and restaurants, as well as a chic bakery, brewery and the Lantern Theatre

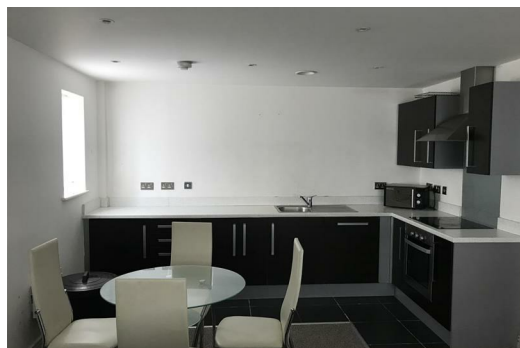
If you're interested in having a closer look, or have any questions, do get in touch.

Available 29th June 2026

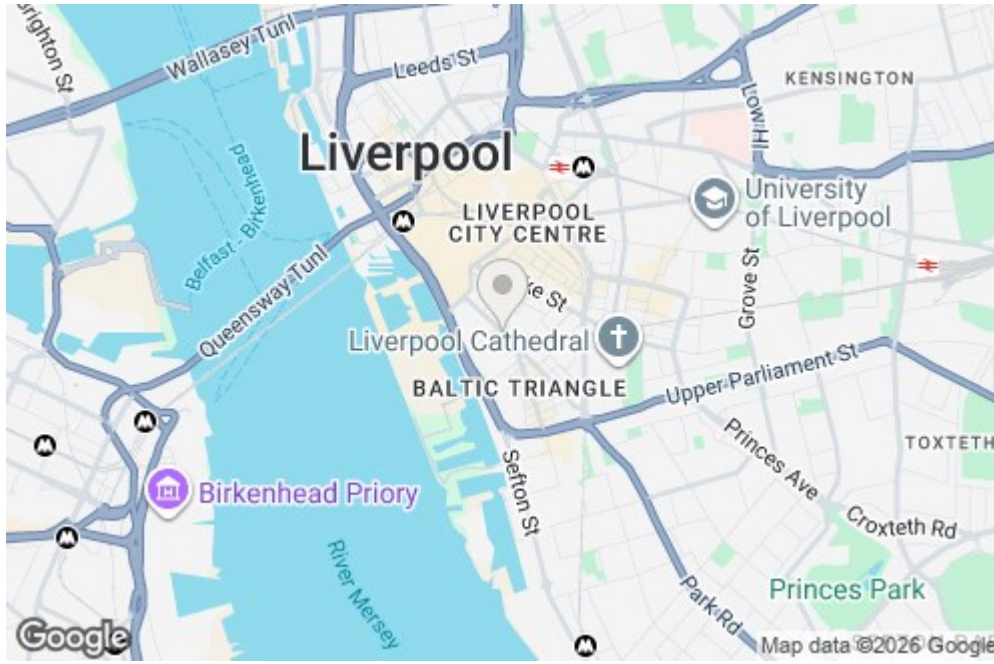
Furnished

Deposit £1000

Council Tax Band B



11 Park Lane Plaza 174 Park Lane, Liverpool, L1 8HG



Energy Efficiency Rating		Environmental Impact (CO ₂) Rating	
Current	Potential	Current	Potential
A	B	B	B
74	85	74	75