



## Highfields Grove, N6

£4,125,000

A detached family house within this sought after development. in the same ownership for a number of years, this fine home is ready to add your own individual personality and design.

Tucked away midway along Fitzroy Park on the edge of Hampstead Heath & bathing ponds yet close to the village and schools, there is easy access to the amenities at Swains Lane.

### Features

- Five Bedrooms
- Three Bathrooms
- Three Reception Rooms
- Kitchen Breakfast Room
- Mature Rear Garden
- Double Garage





## Highfields Grove, N6

Set within this secure gated development of just 24 houses on a seven acre site with manned security gates. Highfields Grove is a delightful enclave in a rural setting with mature grounds which blend into the backdrop.

The property has well balanced and partial split level accommodation with high ceilings, which includes three reception rooms, guest WC and a large kitchen breakfast room on the ground floor.

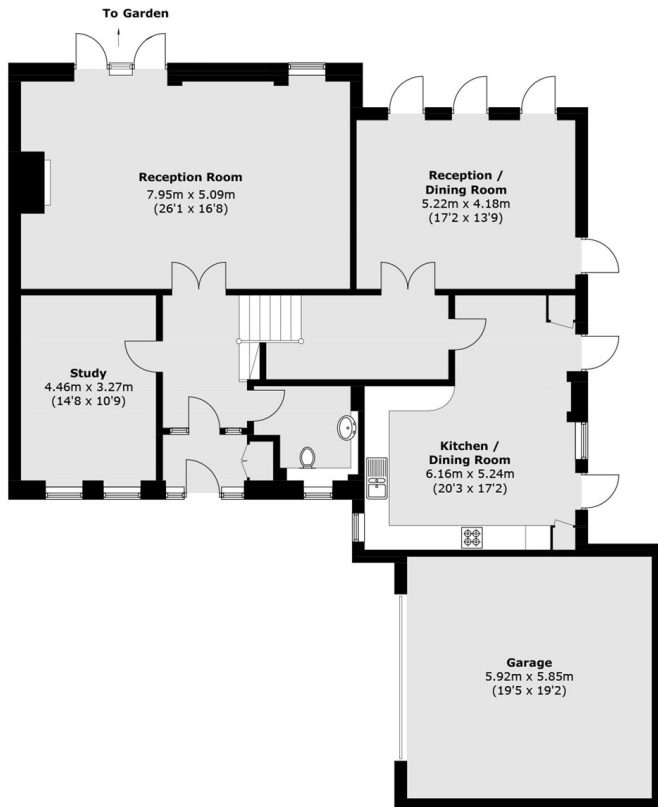
On the upper floor there are five flexible bedrooms with three bathrooms a dressing area and delightful views to the rear.

Externally there is a delightful mature rear garden with westerly aspect, a double garage and driveway parking.

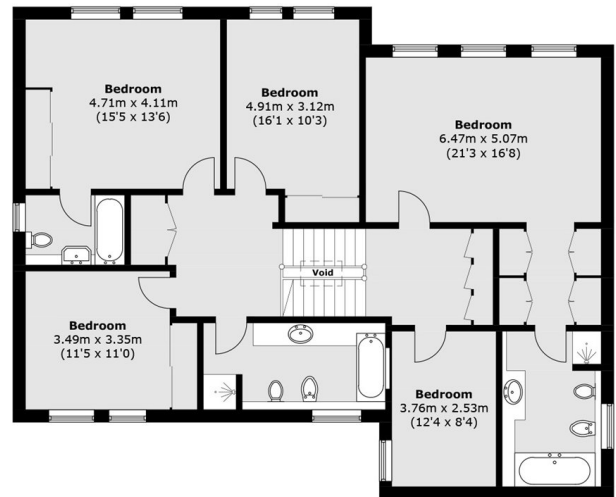




# Highfields Grove, London, N6



**Ground Floor**



**First Floor**

Approx Internal Area: 270.4 sq. m (2,910.5 sq. ft)  
(Excluding Void)  
Garage: 34.6 sq. m (372.4 sq. ft)