



Woodside, Gosport, PO13 0YT

welcome to

Woodside, Gosport

** Close to Shops and Schools ** Great for Road Access ** Extended ** Ideal for a Growing Family ** Downstairs WC and Shower Room ** Upstairs Family Bathroom **

Entrance Porch

UPVC double glazed door to front access, cupboard with coat hanging space, inner glazed door to:

Lounge/Diner

25' 8" max x 16' 6" max (7.82m max x 5.03m max)
UPVC double glazed window to front elevation, French style doors to conservatory, stairs to first floor landing, understairs storage, tv point, two radiators.

Kitchen

13' 9" x 8' 10" (4.19m x 2.69m)
UPVC double glazed window to rear elevation, matching wall and base units, one and a half bowl sink and drainer unit with mixer tap, integrated oven, hob, integrated fridge/freezer, breakfast bar area, integrated dishwasher and washing machine, tiled splashbacks, radiator.

Rear Lobby

UPVC door to side access, doors to shower room and bedroom 4/reception room 2.

Shower Room

Wall mounted shower, tiled walls.

Bedroom 4/Reception Room 2

14' 8" max x 8' 7" max (4.47m max x 2.62m max)
UPVC double glazed window to front elevation, electric radiator, door to:

En-Suite

Wash hand basin, wc, tiled surrounds.





Conservatory

16' 8" x 7' 4" (5.08m x 2.24m)
UPVC double glazed French style doors to rear garden, UPVC double glazed windows to side and rear elevation, space for tumble dryer.

First Floor Landing

Access to loft space, storage cupboard, doors to:

Bedroom 1

12' 10" x 12' 8" (3.91m x 3.86m)
UPVC double glazed window to front elevation, fitted wardrobes with overhead storage space, radiator.

Bedroom 2

12' 9" x 9' 1" (3.89m x 2.77m)
UPVC double glazed window to front elevation, radiator.

Bedroom 3

12' 8" x 9' 4" (3.86m x 2.84m)
UPVC double glazed window to rear elevation, radiator.

Bedroom 4

9' 2" max x 8' 3" max (2.79m max x 2.51m max)
UPVC double glazed window to rear elevation, radiator.

Bathroom

UPVC double glazed window to rear elevation, double shower cubicle, path, bidet, wash hand basin, wc, heated towel rail, shaver socket, tiled surrounds.

Outside

To the front the garden is block paved with parking for multiple vehicles. To the rear there is a patio area, artificial lawn section, side pedestrian access, shed and enclosed by fencing.



view this property online fox-and-sons.co.uk/Property/GOS113487

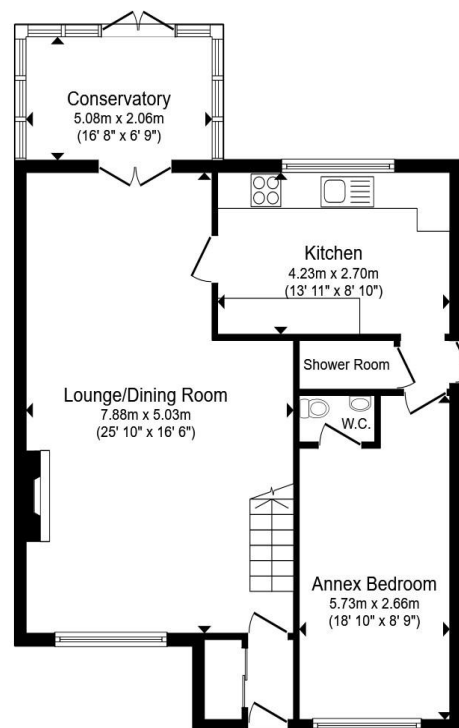


welcome to Woodside, Gosport

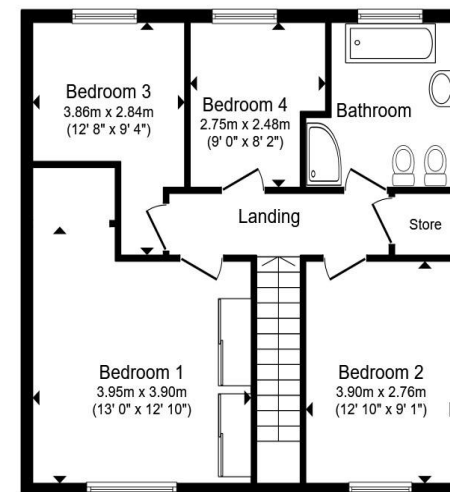
- 3/4 Bedrooms
- Extended
- No Onward Chain
- Fitted Kitchen
- Off Road Parking

Tenure: Freehold EPC Rating: D
Council Tax Band: D

£360,000



Ground Floor



First Floor

Total floor area 133.5 m² (1,436 sq.ft.) approx

This floor plan is for illustrative purposes only. It is not drawn to scale. Any measurements, floor areas (including any total floor area), openings and orientation are approximate. No details are guaranteed, they cannot be relied upon for any purpose and they do not form part of any agreement. No liability is taken for any error, omission or misstatement. A party must rely upon its own inspection(s). Powered by www.propertybox.io



view this property online fox-and-sons.co.uk/Property/GOS113487



Property Ref:
GOS113487 - 0002

1. MONEY LAUNDERING REGULATIONS Intending purchasers will be asked to produce identification documentation at a later stage and we would ask for your co-operation in order that there is no delay in agreeing the sale. 2. These particulars do not constitute part or all of an offer or contract. 3. The measurements indicated are supplied for guidance only and as such must be considered incorrect. Potential buyers are advised to recheck measurements before committing to any expense. 4. We have not tested any apparatus, equipment, fixtures or services and it is in the buyers interest to check the working condition of any appliances. 5. Where an EPC, or a Home Report (Scotland only) is held for this property, it is available for inspection at the branch by appointment. If you require a printed version of a Home Report, you will need to pay a reasonable production charge reflecting printing and other costs. 6. We are not able to offer an opinion either written or verbal on the content of these reports and this must be obtained from your legal representative. 7. Whilst we take care in preparing these reports, a buyer should ensure that his/her legal representative confirms as soon as possible all matters relating to title including the extent and boundaries of the property and other important matters before exchange of contracts.

Fox & Sons is a trading name of Sequence (UK) Limited which is registered in England and Wales under company number 4268443, Registered Office is Cumbria House, 16-20 Hockliffe Street, Leighton Buzzard, Bedfordshire, LU7 1GN. VAT Registration Number is 500 2481 05.



023 9250 3733



Gosport@fox-and-sons.co.uk



10 High Street, GOSPORT, Hampshire, PO12 1BX



fox-and-sons.co.uk