



Randolph Avenue

London, W9

Asking Price £750,000

Positioned on the second floor, with a lift, is this bright, charming and spacious one bedroom apartment spanning approximately 610 square feet.

With abundant natural light and wonderful open views, the accommodation comprises a reception room, separate eat in kitchen, large bedroom with plentiful storage and a fully fitted bathroom.

Randolph Avenue is superbly located close to the cafes and restaurants of Elgin Avenue, Clifton Road and Formosa Street, the open spaces and sports facilities of Paddington Recreation Ground, with Warwick Avenue and Maida Vale Underground stations on the Bakerloo line a short walk away.

CHESTERTONS



Randolph Avenue

London, W9

- Beautiful White Stucco Building
- Bright Reception & Contemporary Eat In Kitchen
- Large Bedroom with Built In Wardrobes & Modern Bathroom
- Moments To Warwick Avenue & Clifton Road Amenities.



Tenure: Share of Freehold 994 years 8 months

Service Charge: £2,464 pa

Ground Rent: £0

Local Authority: City Of Westminster

Council Tax Band: E

Energy Efficiency Rating		Current	Potential
Very energy efficient - lower running costs	A		
(91-101)	B		
(81-90)	C	74	82
(68-80)	D		
(55-67)	E		
(39-54)	F		
(21-38)	F		
(1-20)	G		
Not energy efficient - higher running costs			
England, Scotland & Wales		EU Directive 2002/91/EC	

Chestertons Little Venice Sales

26 Clifton Road

Maida Vale

London

W9 1SX

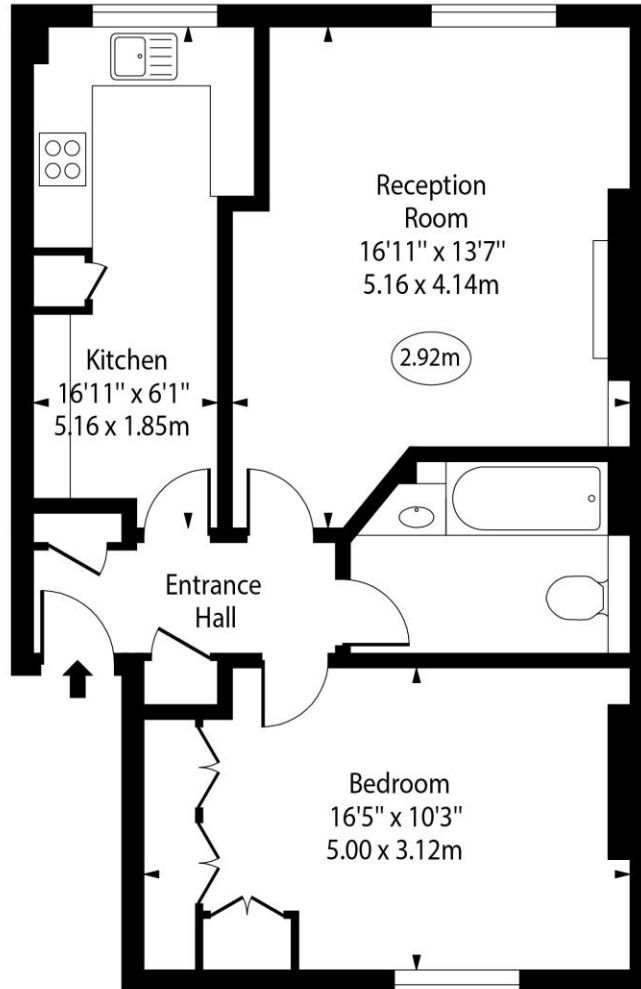
littlevenice@chestertons.co.uk

020 7286 4632

chestertons.co.uk

Randolph Avenue, W9

○ - Ceiling Height



Second Floor

Approx Gross Internal Area 609 Sq Ft - 56.58 Sq M

Every attempt has been made to ensure the accuracy of the floor plan shown. However, all measurements, fixtures, fittings, and data shown are approximate interpretations and for illustrative purposes only. Measured according to the RICS. Not To Scale.

www.goldlens.co.uk
Ref. No. 031491E

