



Alex & Matteo
ESTATE AGENTS



Benwick Close, London, SE16 2HE

****ONLY ONE COUPLE OF TWO WORKING PROFESSIONALS FOR THE PROPERTY, NO HMO****

A generous four bedroom, end terrace house. Located moments from Southwark Park and a short walk away from both Bermondsey and Canada Water Underground stations.

The ground floor boasts an open plan kitchen with access to a private garden, the first bedroom, modern shower room, and front garden. The first floor boasts a generous double bedroom with built-in storage, currently being used as a home office, and a bright living room. The top floor features a large double bedroom with built-in storage, secondary smaller bedroom, and a spacious family bathroom. Additional storage can be found in the hallway and landings.

There are a range of local amenities such as restaurants, cafes and a number of independent micro-breweries on the 'beer mile'. Spa Terminus and Maltby Street markets are within walking distance and Borough market is a short bus journey away.

- Large Four Bedroom House
- Private Garden
- Excellent Transport Links
- Surrounded by Local Amenities
- Naturally Bright
- Furnished

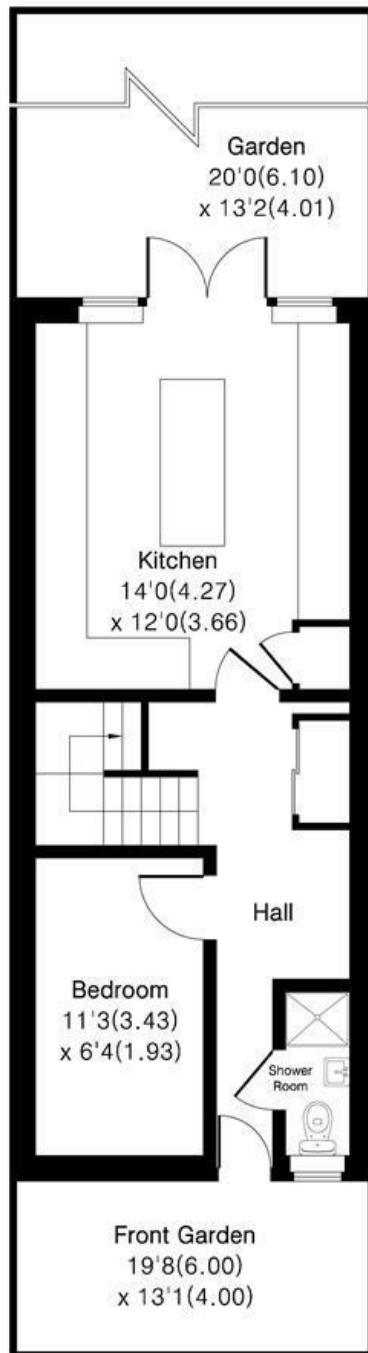
Alex & Matteo
ESTATE AGENTS

£2,850 Per month

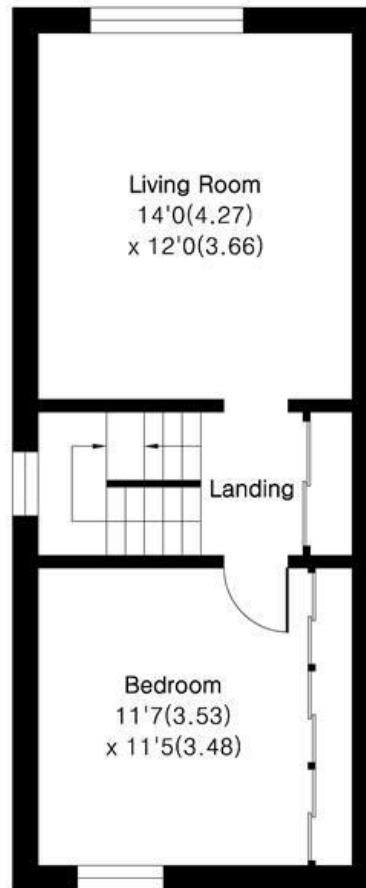
Benwick Close SE16

Approximate Area = 1147 sq ft / 106.5 sq m

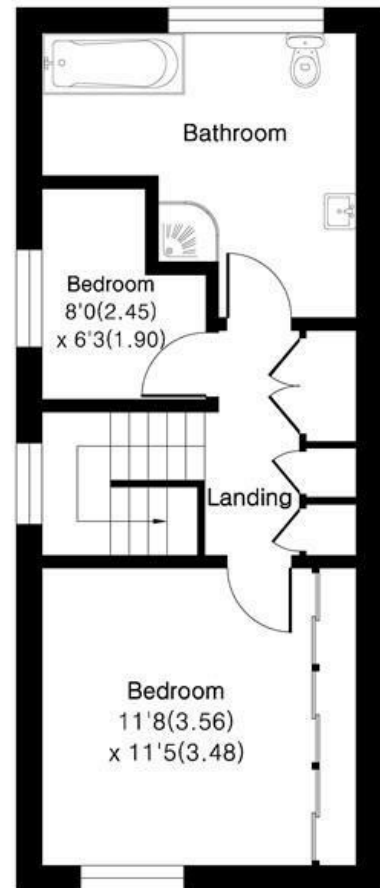
For identification only - Not To Scale



Ground Floor



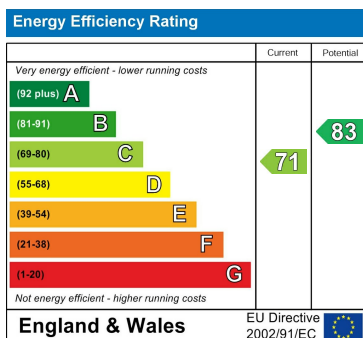
First Floor



Second Floor

Alex & Matteo
ESTATE AGENTS

Floor plan Produced in accordance with RICS Property Measurement 2nd Edition.
Incorporating International Property Measurement Standards (IPMS2 Residential).
Produced for Alex & Matteo Estate Agents.



104 Cocoa Studios, The Biscuit Factory Drummond Road, London, United Kingdom, SE16 4FA

T. 020 3983 1833

E. hello@alex-matteo.com