



Biscoe Close, TW5

£239,950

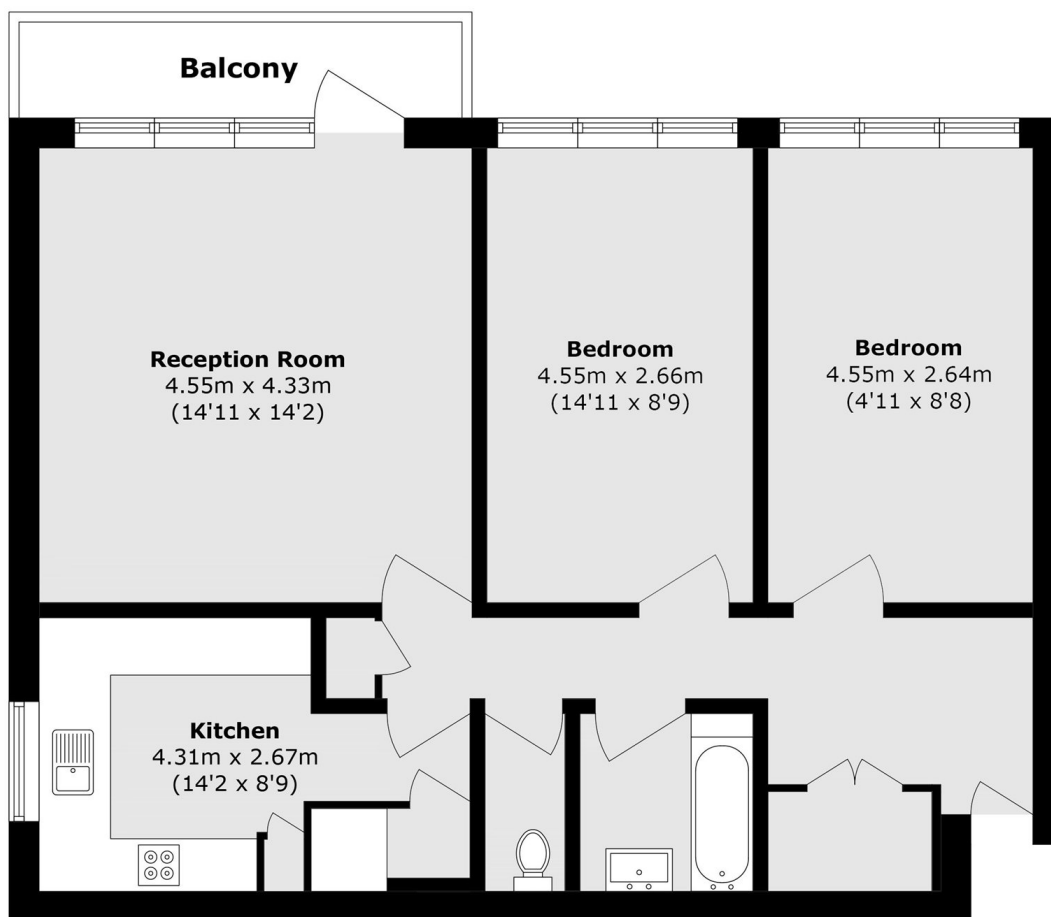
A two double bedroom apartment is ideal for a first time buyer or investor. This property has a bright reception room with direct access to private balcony, open plan kitchen, ample storage space and no onward chain, communal parking is included.

Bellamy House is located in Heston and has great links via car to and from Central London. Norwood Green Park and the Osterley Park are a short walking distance from the property.

Features

- No Onward Chain
- Lift Serviced
- Close to Amenities
- Two Double Bedrooms
- Great Views
- Communal Parking

Biscoe Close, Hounslow, TW5



Total area (approx.): 73.2 sq. m (787.9 sq. ft)

Balcony area (approx.): 4.2 sq. m (45.2 sq. ft)