

## Bedford Road, W13

£669,999

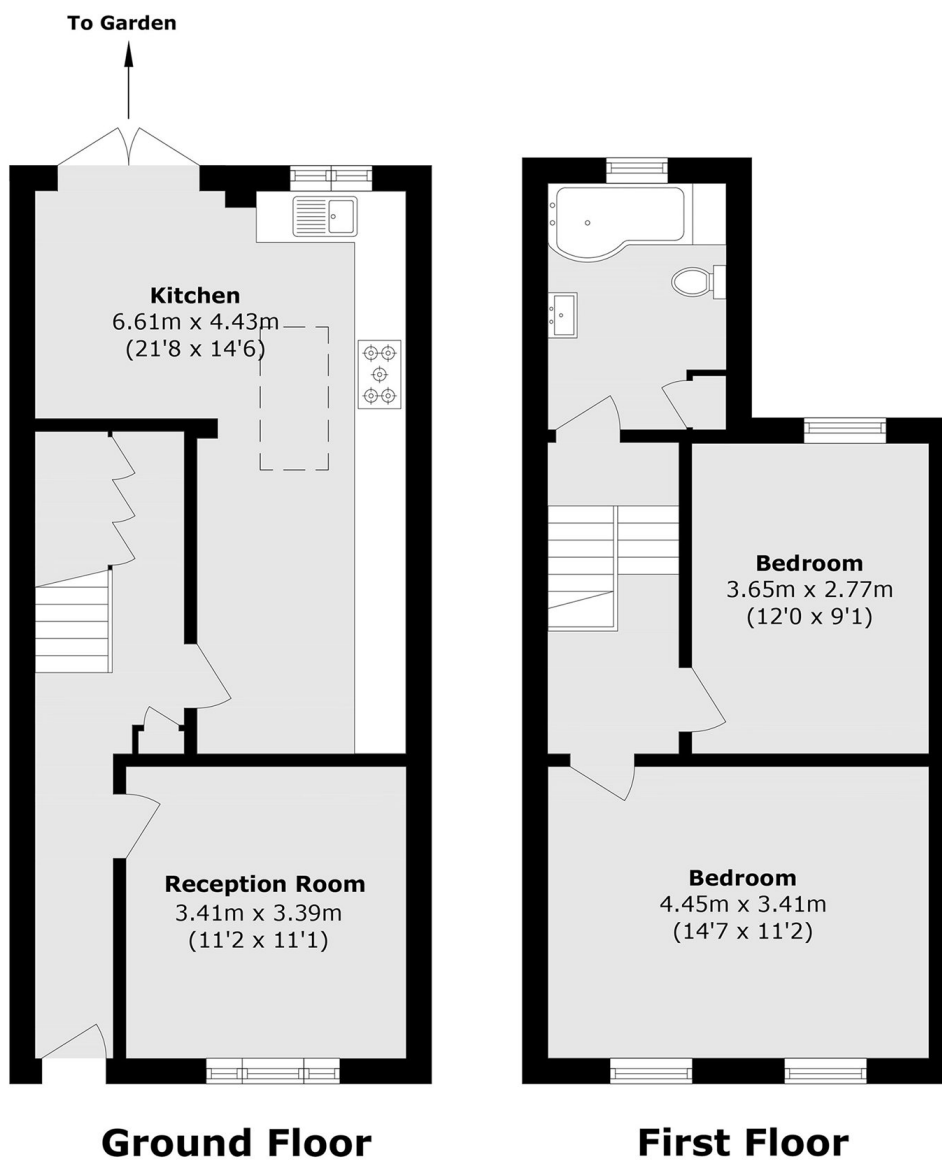
A charming two-bedroom Victorian cottage that's been modernised and extended to offer versatile, contemporary living. Downstairs we have a cosy front reception room and a spacious kitchen-diner to the rear, while upstairs there are two good-sized double bedrooms and a family bathroom. Offered with no onward chain, it's ready to move straight into.

Located just moments from the West Ealing Elizabeth line station with fast and easy access to Heathrow, Central London, Canary Wharf and beyond. There is a Waitrose superstore at the end of the road, along with many other independent shops and eateries.

### Features

- Two Bedrooms
- Victorian Cottage
- Close To Station
- Private Garden
- No Onward Chain
- Popular Residential Location

# Bedford Road, London, W13



Total area (approx.): 82.5 sq. m (888.0 sq. ft)