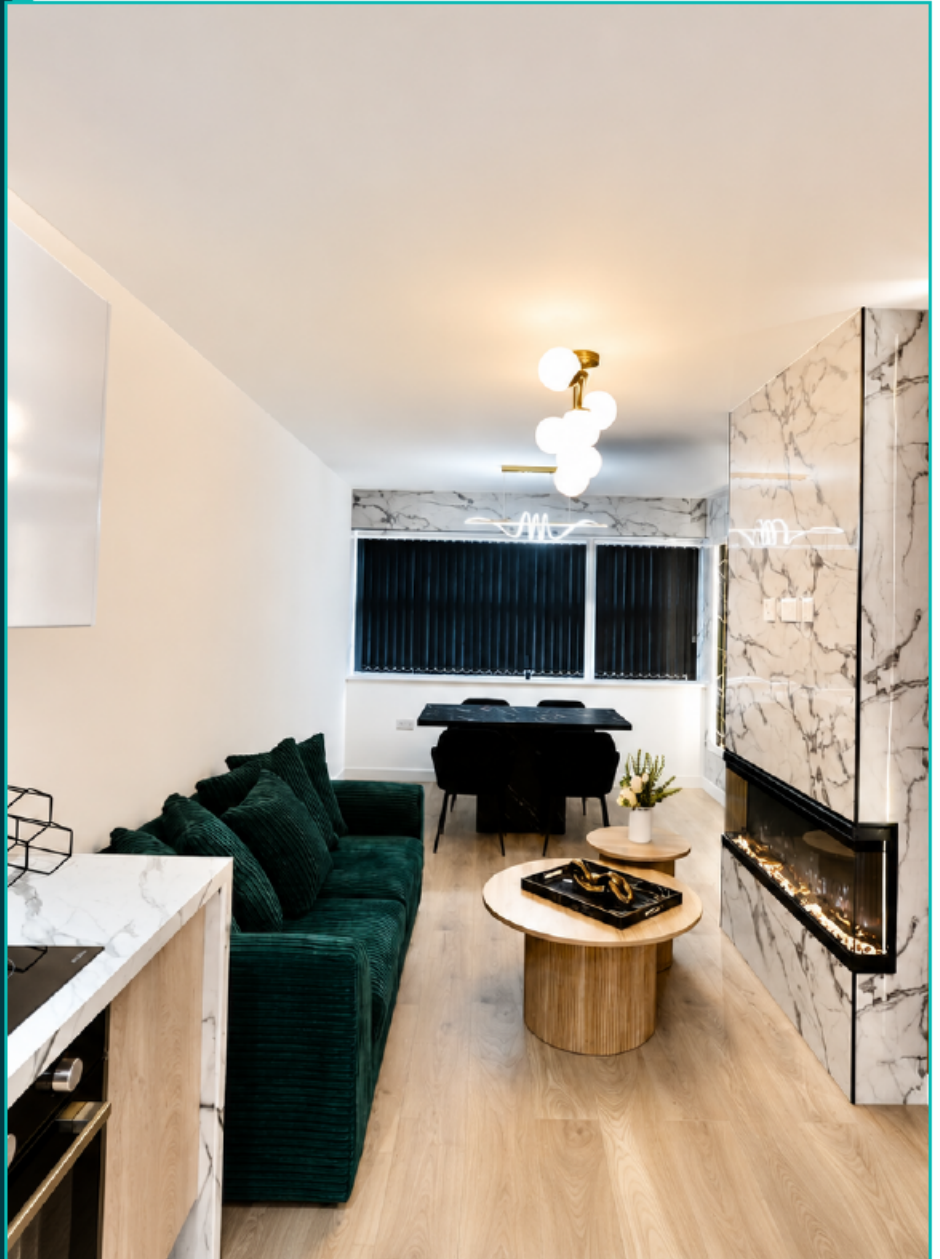


Modern Town Centre Living

A premium one-bedroom apartment at Nicholson Point, 4 Cotham Street, St Helens WA10 1SA. Stylish open-plan living, high-impact finishes and a central location designed for convenience.



At a glance

- £895 PCM
- 1 bedroom
- Approx. 650 sq ft
- 0151 475 5042

Nicholson Point - Flat 9

1 Bedroom Apartment | Fully Furnished
Nicholson Point, 4 Cotham Street
St Helens, WA10 1SA
Available July 2026
lettings@nicholsongroup.co.uk

[CLICK FOR FULL ADVERT](#)

[CLICK TO RESERVE ONLINE](#)

[CLICK FOR VIDEO TOUR](#)



0151 475 5042

Call us today

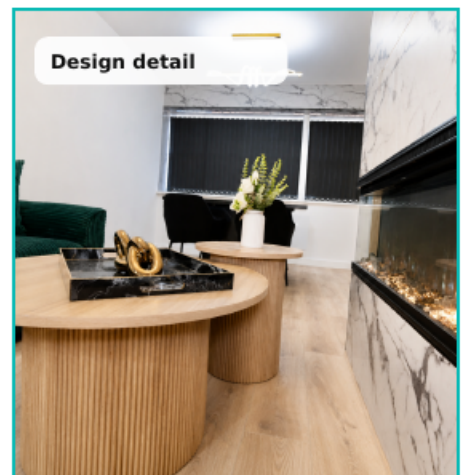
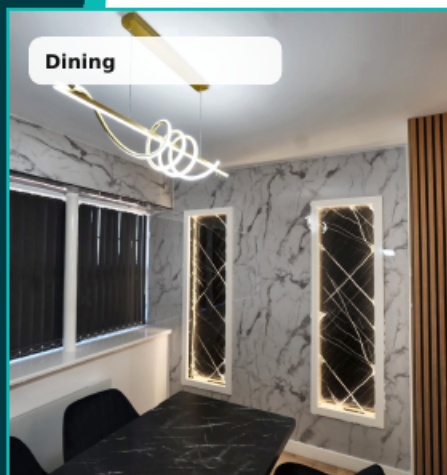


lettings@nicholsongroup.co.uk





Email us anytime

Open-Plan Living & Kitchen

Designed for modern town-centre living, the kitchen, dining and lounge areas connect in one stylish space with marble-effect surfaces, warm timber tones, statement lighting and a feature fireplace.



At a glance

-  Open-plan layout
-  Designer kitchen
-  Feature fireplace
-  Statement lighting

[CLICK FOR FULL ADVERT](#)

[CLICK TO RESERVE ONLINE](#)

[CLICK FOR VIDEO TOUR](#)



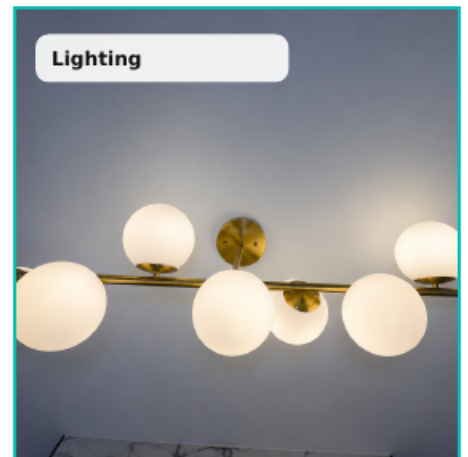
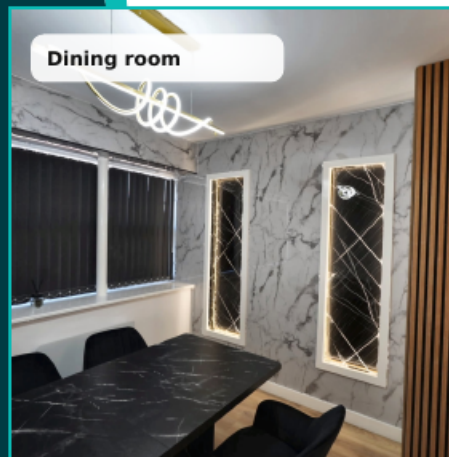
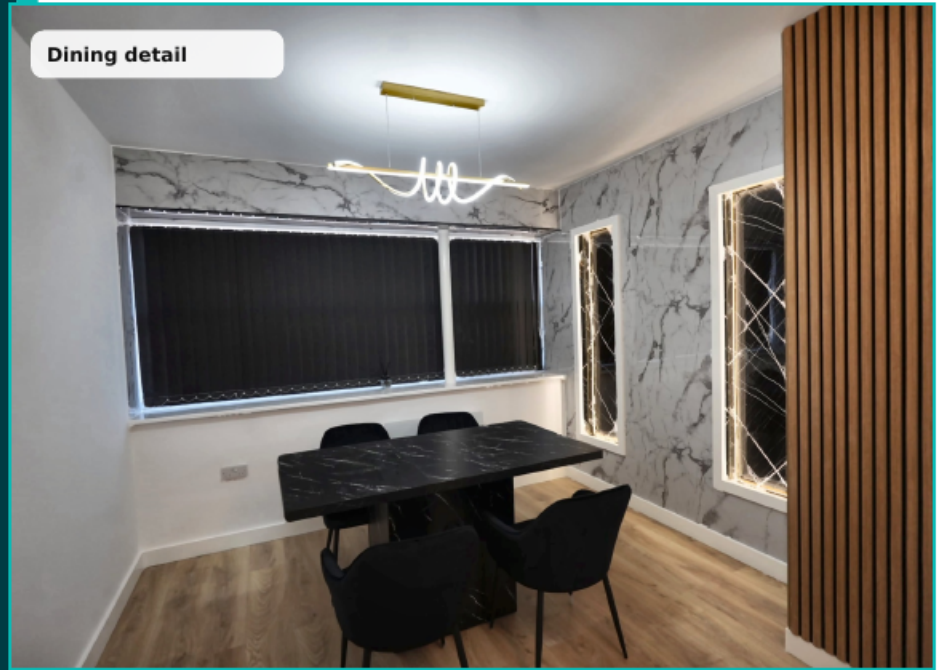
0151 475 5042
Call us today



lettings@nicholsongroup.co.uk
Email us anytime

Interior Highlights

Every detail has been considered to create a home that feels polished, distinctive and practical. Lighting, surfaces and furnishings work together to create a high-quality finish throughout.



At a glance

- F** Feature fireplace
- L** Statement lighting
- D** Designer finishes
- T** Dining space

[CLICK FOR FULL ADVERT](#)

[CLICK TO RESERVE ONLINE](#)

[CLICK FOR VIDEO TOUR](#)



0151 475 5042

Call us today



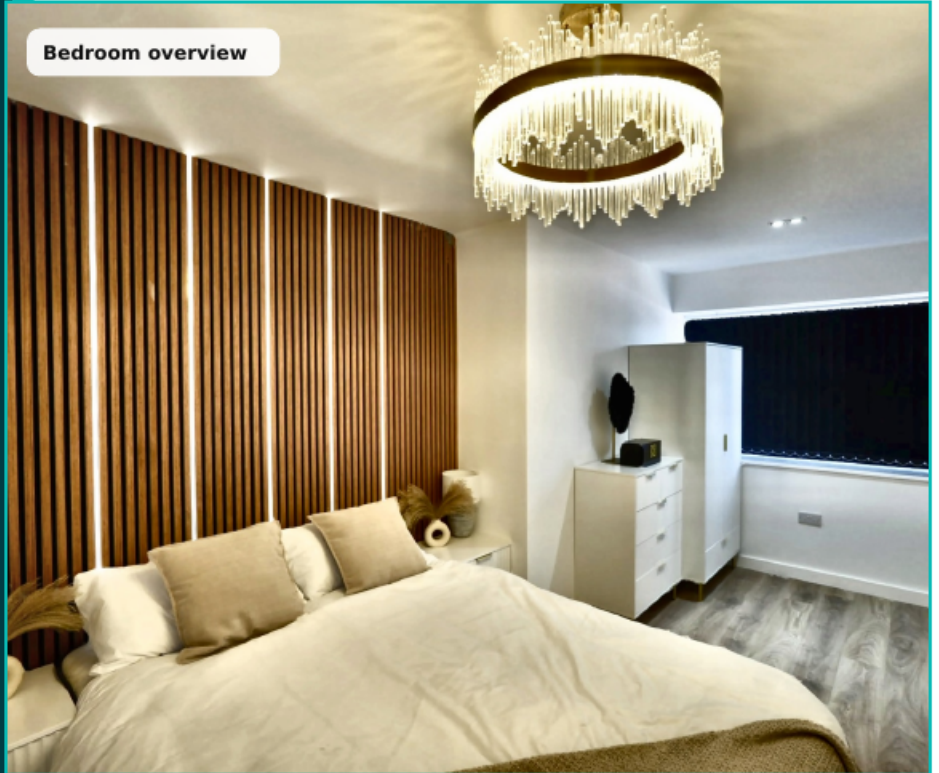
lettings@nicholsongroup.co.uk

Email us anytime

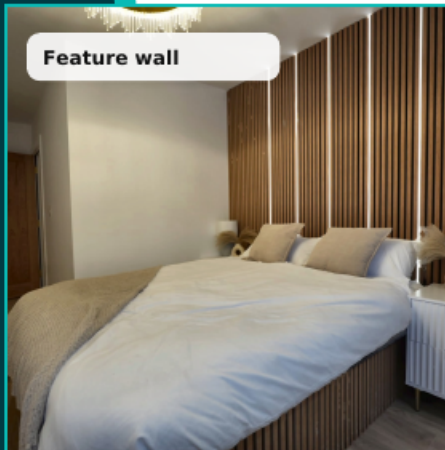
Bedroom Retreat

A calm, contemporary bedroom finished with warm timber detail, soft lighting and practical furnishings. A private space that continues the apartment's polished design language.

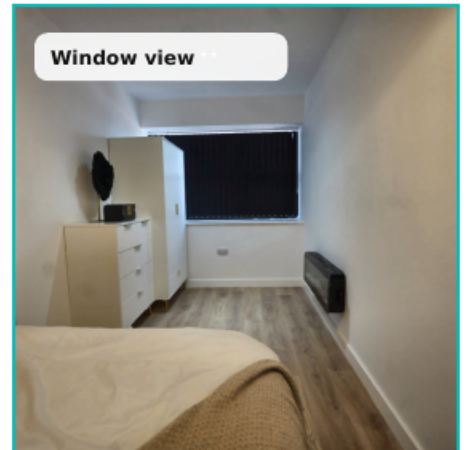
Bedroom overview



Feature wall



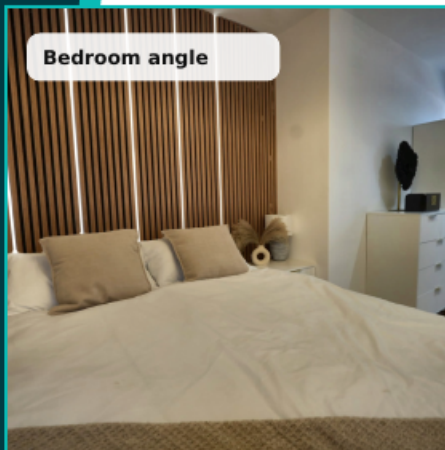
Window view



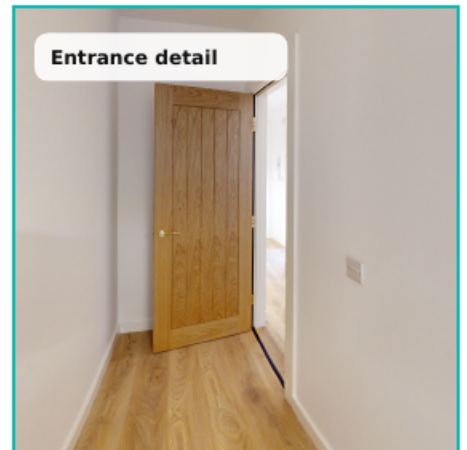
At a glance

- B** Generous bedroom
- W** Warm feature wall
- S** Storage
- ✓** Move-in ready

Bedroom angle



Entrance detail



[CLICK FOR FULL ADVERT](#)

[CLICK TO RESERVE ONLINE](#)

[CLICK FOR VIDEO TOUR](#)



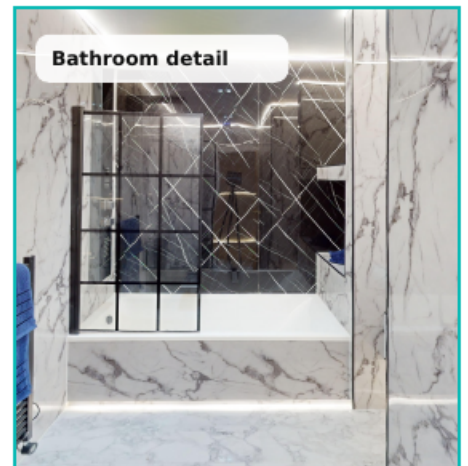
0151 475 5042
Call us today



lettings@nicholsongroup.co.uk
Email us anytime

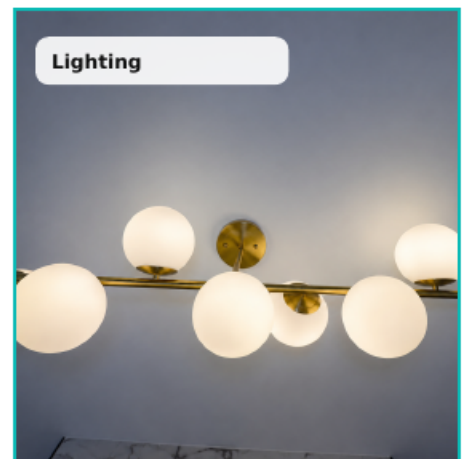
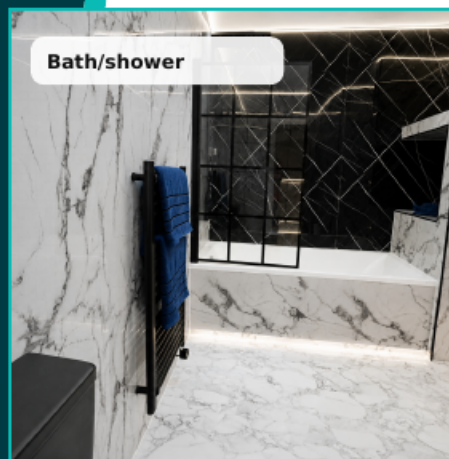
Luxury Bathroom & Finishes

A bold bathroom finish with marble-effect surfaces, black-framed detailing, contemporary fittings and a striking blue vessel basin. Designed to feel premium and memorable.



At a glance

- M** Marble-effect
- B** Black framing
- S** Statement sink
- L** Ambient lighting



[CLICK FOR FULL ADVERT](#)

[CLICK TO RESERVE ONLINE](#)

[CLICK FOR VIDEO TOUR](#)



0151 475 5042

Call us today



lettings@nicholsongroup.co.uk

Email us anytime

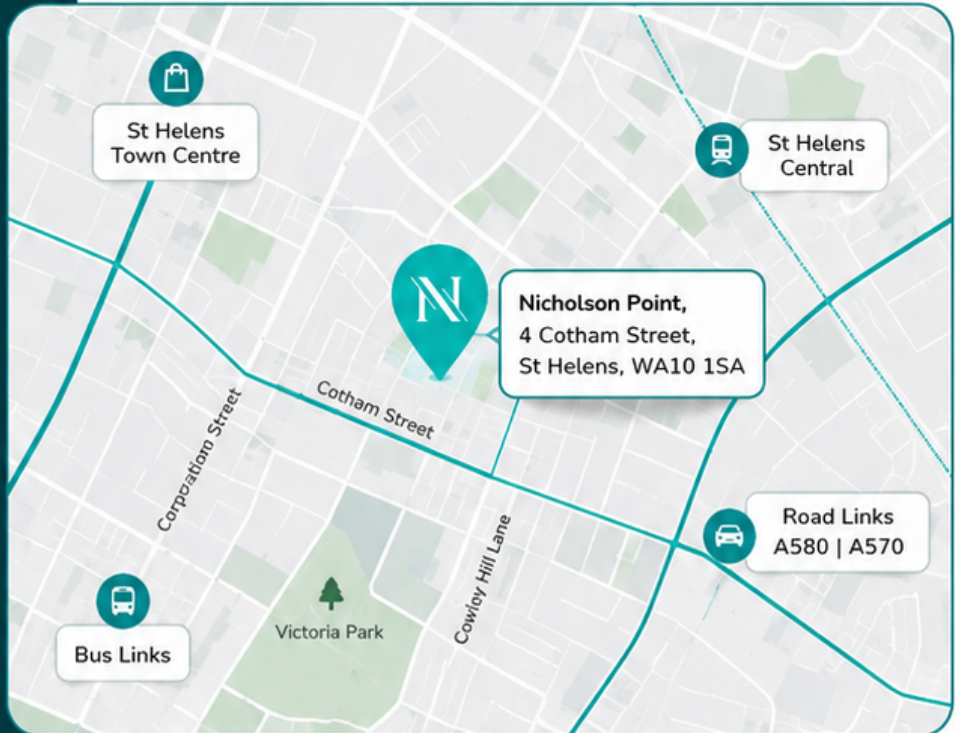
Location, Amenities & Links

Nicholson Point is positioned for connected town-centre living with local shops, cafes, restaurants, public transport and regional travel routes within easy reach.

LOCAL & TRAVEL AMENITIES

Nicholson Point, 4 Cotham Street, St Helens, WA10 1SA

- Town-centre amenities nearby
- Easy access to shops, cafes and restaurants
- Convenient links to St Helens Central and local bus routes
- Good connections toward Liverpool and Manchester



AT A GLANCE

- 1** Bedroom
- TC** Town Centre
- OP** Open-Plan
- PF** Premium Finish

At a glance

- A** 4 Cotham Street
- T** St Helens links
- S** Town amenities
- C** Clickable links



CLICK FOR FULL ADVERT

View the complete listing



CLICK TO RESERVE ONLINE

Secure the apartment online



CLICK FOR VIDEO TOUR

Watch the video walkthrough

Nicholson Lettings

lettings@nicholsongroup.co.uk

0151 475 5042



0151 475 5042

Call us today



lettings@nicholsongroup.co.uk

Email us anytime