





£260,000

A spacious and well-presented two bedroom second floor apartment in the sought after location of Central Milton Keynes, conveniently in walking distance to Milton Keynes Central train station. The accommodation comprises an open-plan lounge/diner, kitchen, two double bedrooms, a family bathroom, a dressing room and en-suite shower room to main bedroom. With the advantages of air-conditioning, secure video entry and high ceilings, this property is ideal for those working in Central Milton Keynes or commuting into London.

Property Description

COMMUNAL ENTRANCE

Secure video intercom entry to communal entrance. Stairs and lift to all floors.

HALLWAY

Doors to open plan lounge/diner, bedrooms, bathroom and storage cupboard, electric panel heater, telephone for for secure video/intercom entry.

LOUNGE/DINER

Double glazed windows to rear aspect. Open to kitchen, television point, telephone point.

KITCHEN

Range of wall and floor standing storage cupboards with square edge work surface over, composite one and a half sink with mixer tap, integrated 'Neff' electric oven and 'Neff' induction hob with extractor hood over, 'Neff' dishwasher, washer/dryer, under counter fridge, under counter freezer, under counter lighting, plinth light, spotlights.

BEDROOM ONE

Two double glazed windows to side aspect. Open to dressing room.

DRESSING ROOM

Range of built in storage/wardrobes, door to en-suite.

EN-SUITE

Low level w.c. with push button flush and wash hand basin with mixer tap set in vanity unit, fully tiled shower cubicle and wall mounted shower, splash back tiling, extractor fan, spotlights.

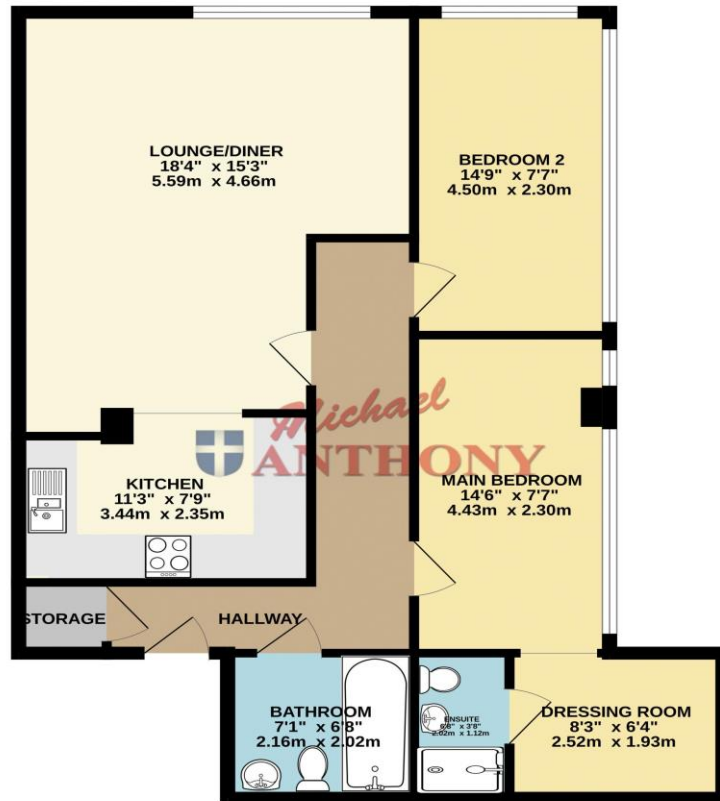
BEDROOM TWO

Double glazed windows to side and rear aspects.

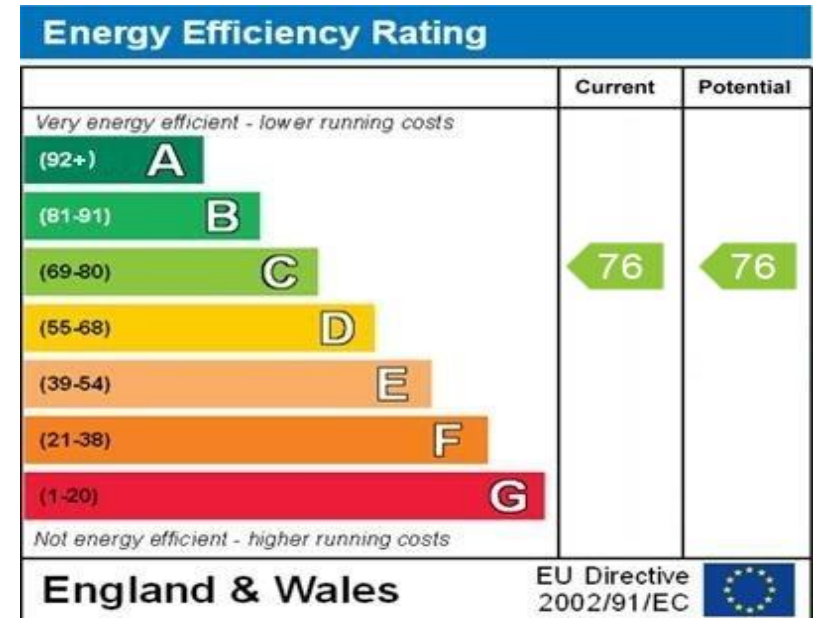
BATHROOM

Low level w.c., with push button flush and wash hand basin with mixer tap set in vanity unit, panelled bath with mixer tap and shower attachment, extractor fan, heated towel rail, spotlights.

SECOND FLOOR
792 sq.ft. (73.6 sq.m.) approx.



TOTAL FLOOR AREA: 792 sq.ft. (73.6 sq.m.) approx.
Whilst every attempt has been made to ensure the accuracy of the floorplan contained here, measurements of doors, windows, rooms and any other items are approximate and no responsibility is taken for any error, omission or mis-statement. This plan is for illustrative purposes only and should be used as such by any prospective purchaser. The services, systems and appliances shown have not been tested and no guarantee as to their operability or efficiency can be given.
Made with Metropix 5/2024



WWW.EPC4U.COM

MONEY LAUNDERING REGULATIONS 2017 intending purchasers will be asked to produce identification and proof of financial status when an offer is received. We would ask for your co-operation in order that there will be no delay in agreeing the sale.

THE CONSUMER PROTECTION REGULATIONS 2008 The Agent has not tested any apparatus, equipment, fixtures and fittings or services and so cannot verify that they are in working order or fit for the purpose. A Buyer is advised to obtain verification from their Solicitor or Surveyor. References to the Tenure of a Property are based on information supplied by the Seller. The Agent has not had sight of the title documents. A Buyer is advised to obtain verification from their Solicitor. You are advised to check the availability of this property before travelling any distance to view. We have taken every precaution to ensure that these details are accurate and not misleading. If there is any point which is of particular importance to you, please contact us and we will provide any information you require. This is advisable, particularly if you intend to travel some distance to view the property. The mention of any appliances and services within these details does not imply that they are in full and efficient working order. These particulars are in draft form awaiting Vendors confirmation of their accuracy. These details must therefore be taken as a guide only and approved details should be requested from the agents

209A Witan Gate Sovereign Court Milton Keynes Buckinghamshire MK9 2HP
01908 393 553 | miltonkeynes@maea.co.uk