



Price
£435,000

Freehold

3x  2x  1x 

**The Street, Ash, Kent,
CT3**

OVER 60?

Secure this property
for up to **59% less!**

Wards
Helping you move forwards



Main features

- No onward chain complications
- Recently refurbished and immaculate throughout
- Ideal for families or first time buyers
- Private garden and 2 allocated parking spaces
- Located in the highly sought after village of Ash

Accommodation

GROUND FLOOR

Entrance Lobby
Entrance Hallway
Lounge/Kitchen: 23'0 x 19'1 (7.02m x 5.82m)
Cloakroom

FIRST FLOOR

Landing
Bedroom 1: 13'0 x 9'5 (3.97m x 2.87m)
En-suite Shower Room: 9'5 x 6'1 (2.87m x 1.86m)

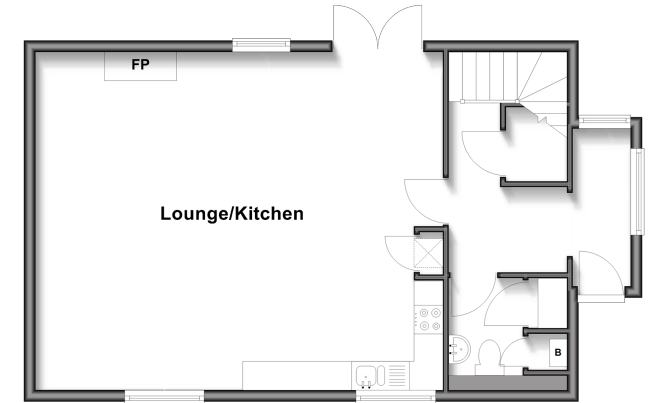
SECOND FLOOR

Landing
Bedroom 2: 13'9 x 11'7 (4.19m x 3.53m)
Bedroom 3: 9'1 x 8'3 (2.77m x 2.52m)
Bathroom: 7'5 x 6'0 (2.26m x 1.83m)

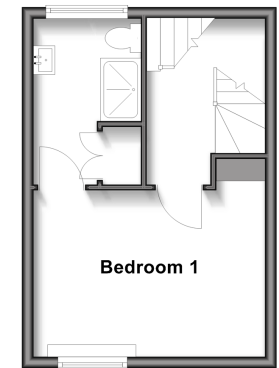
OUTSIDE

Rear Garden
2 x Allocated Parking Spaces

Ground Floor
Approx. 57.1 sq. metres (614.3 sq. feet)



First Floor
Approx. 23.5 sq. metres (253.4 sq. feet)



Second Floor
Approx. 40.8 sq. metres (439.3 sq. feet)



Call Canterbury - 01227 766669 ■ wardsofkent.co.uk

- Legal advice should be taken to verify fixtures/fittings, planning, alterations and/or lease details
- Appliances & services are untested, dimensions are approximate and floor plans are not to scale
- Through a Homewise Home For Life Plan people aged 60+ can secure this property for up to 59% less, by purchasing a Lifetime Lease.



10349211/20250620/LC/CB