

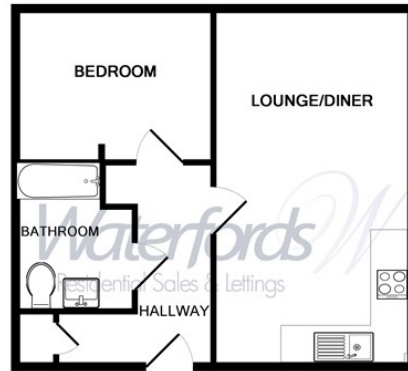


Flat 1

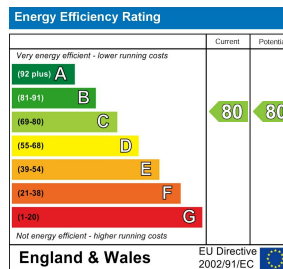
Nym Close | | Camberley | GU15 3HG

£1,150 PCM

Waterfords W
Residential Sales & Lettings



Whilst every attempt has been made to ensure the accuracy of the floor plan contained here, measurements of doors, windows, rooms and any other items are approximate and no responsibility is taken for any error, omission, or mis-statement. This plan is for illustrative purposes only and should be used as such by any prospective purchaser. The services, systems and appliances shown have not been tested and no guarantee as to their operability or efficiency can be given
Made with Metropix ©2017



Description

A well-presented one bedroom apartment located on the popular Nym Close in Camberley, available to let from February 2026. The property is offered unfurnished and features a bright living area, modern kitchen, well-proportioned bedroom and a contemporary bathroom. Ideally situated close to Camberley town centre, local amenities and transport links, making it perfect for professionals or couples.

Key features

- Very Modern Through Out
- One Bedroom
- Available February 2026
- Council Tax Band C
- EPC C
- First Floor Apartment
- Allocated Parking
- Unfurnished
- 12 Month Minimum Term



35 Plough Road
Hampshire
GU46 7UW
01276 903006

surreylettings@waterfords.co.uk
<https://www.waterfords.co.uk/>