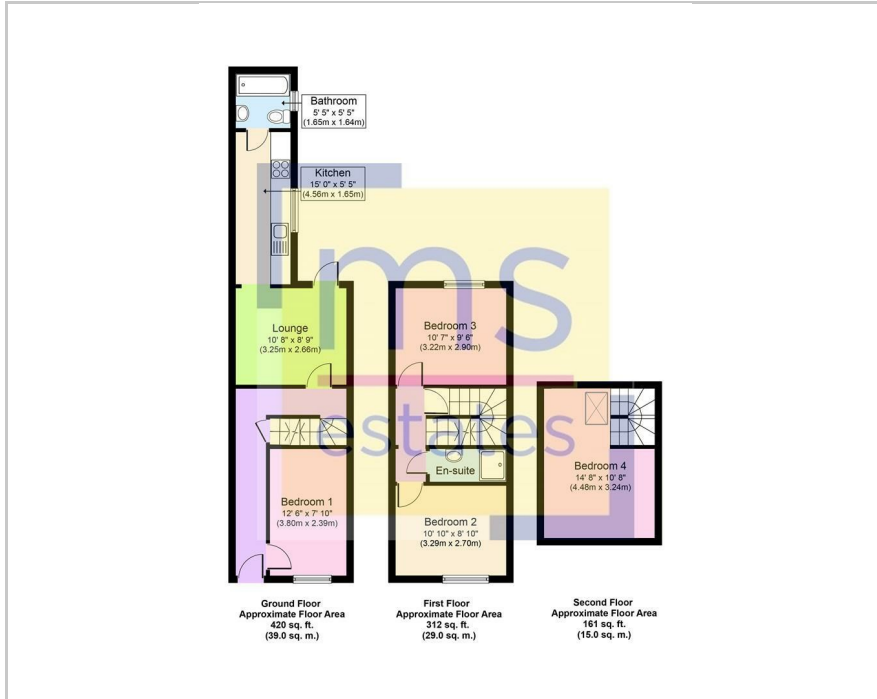


The logo for 'ms estates' is located in the top right corner. It features the lowercase letters 'ms' in a bold, blue, sans-serif font, with a thin red horizontal line underneath. Below this, the word 'estates' is written in a smaller, blue, sans-serif font. The entire logo is set against a yellow square background with blue L-shaped corner accents.

3a Osmaston Street, Nottingham, NG7 1SD
£390 Per Week

A set of icons at the bottom right of the image. From left to right: a bed icon with the number '3', a bathtub icon with the number '2', a sofa icon with the number '1', and a menu icon with the letter 'D'.A faint, semi-transparent version of the 'ms estates' logo is located in the bottom right corner of the image.

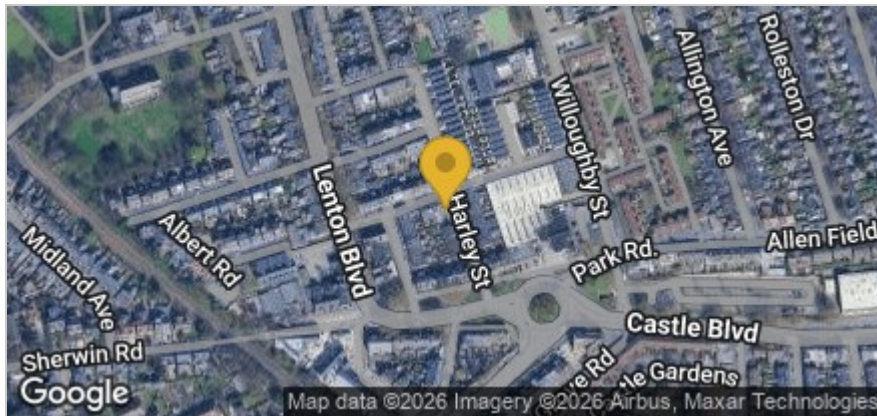
Floor Plan



- STUDENT ACCOMMODATION
- Option for bills included for an additional £20pppw
- Very well presented throughout
- 3 Double bedrooms & spare room
- Living area with corner sofa
- Permit Parking
- Great location
- Located off Lenton Boulevard
- Close to local amenities



Area Map



Energy Efficiency Rating

	Current	Potential
<i>Very energy efficient - lower running costs</i>		
(92 plus) A		
(81-91) B		
(69-80) C		
(55-68) D	59	
(39-54) E		
(21-38) F		
(1-20) G		
<i>Not energy efficient - higher running costs</i>		
England & Wales	EU Directive 2002/91/EC	76

These particulars, whilst believed to be accurate are set out as a general outline only for guidance and do not constitute any part of an offer or contract. Intending purchasers should not rely on them as statements of representation of fact, but must satisfy themselves by inspection or otherwise as to their accuracy. No person in this firm's employment has the authority to make or give any representation or warranty in respect of the property.

3 Park Street, Derby Road, Lenton, Nottingham, NG7 1RR

Tel: 0115 9120061 Email: mail@ms-estates.co.uk www.ms-estates.co.uk