

TO LET



Hornsey Road, Archway, London, N19
£3,750 Per Calendar Month

Anthony Webb
ESTATE AGENTS

Hornsey Road, Archway, London, N19

Four sharers wanted for beautifully RENOVATED and FURNISHED split level converted flat occupying the first and second floors above commercial premises. The property has a HMO license for four tenants.

The flat is conveniently located close to local amenities, bus routes and stations including Upper Holloway, Archway and Finsbury Park.

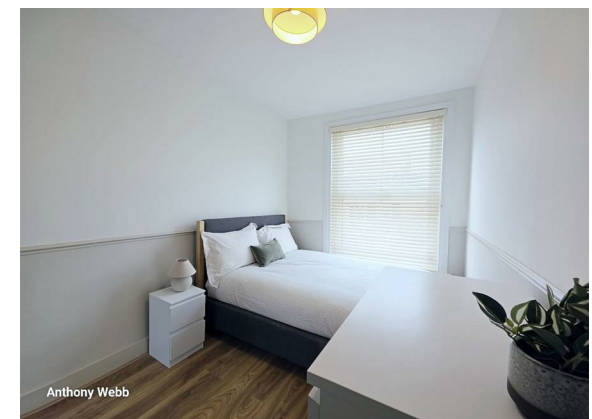
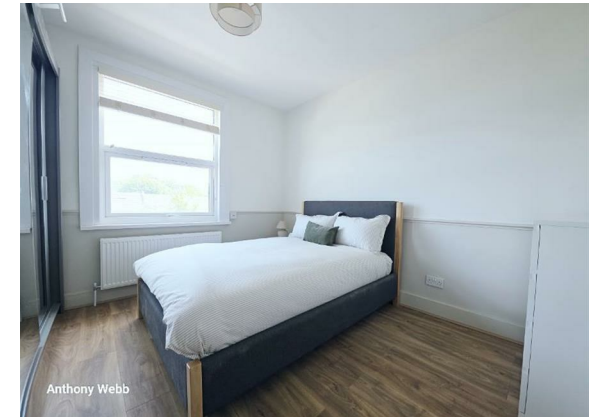
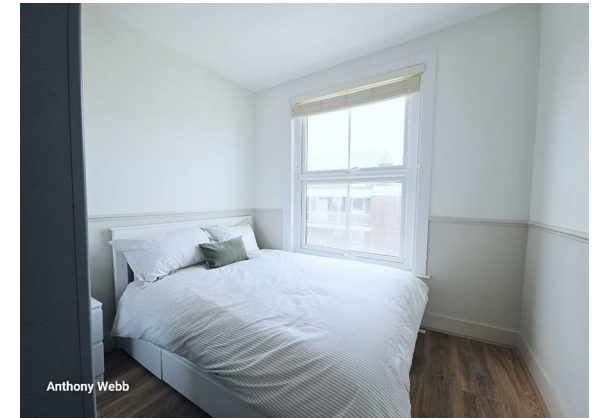
The flat consists of four good size bedrooms, an open plan living/kitchen space with breakfast bar and appliances, spacious new shower room, gas central heating/double glazing, new laminate floors and secure communal entrance.

Islington council band D

5 weeks deposit £4326

Minimum annual household income to meet referencing criteria £112,500

- Four bedrooms
- Split level 1st & 2nd floor flat
- Open plan living/kitchen space
- New Kitchen with appliances
- Gas central heating/double glazing
- New modern shower room
- Newly refurbished through out
- Close to shops & stations





Anthony Webb



Anthony Webb



Anthony Webb



Anthony Webb

Hornsey Road
Archway
London
N19 4EB

Tenure:
Gross Internal Area: 914.00 sq ft



Energy Efficiency Rating		Current	Potential
Very energy efficient - lower running costs			
(92 plus) A			81
(81-91) B			
(69-80) C		72	
(55-68) D			
(39-54) E			
(17-38) F			
(1-20) G			
Not energy efficient - higher running costs			
England & Wales		EU Directive 2002/91/EC	
Environmental Impact (CO ₂) Rating		Current	Potential
Very environmentally friendly - lower CO ₂ emissions			
(92 plus) A			
(81-91) B			
(69-80) C			
(55-68) D			
(39-54) E			
(21-38) F			
(1-20) G			
Not environmentally friendly - higher CO ₂ emissions			
England & Wales		EU Directive 2002/91/EC	



TOTAL FLOOR AREA: 85.0 sq m (935 sq ft) approx.
While every attempt has been made to ensure the accuracy of the floorplan contained here, measurements of walls, windows, rooms and any other items are approximate and no responsibility is taken for any error, omission or mis-statement. This plan is for illustrative purposes only and should be used as such for any prospective purchase. The services, systems and appliances shown have not been tested and no guarantee is to their operability or efficiency can be given.
Made with Hectopix 1.0.0.0

Property particulars as supplied by Anthony Webb Estate Agents are set out as a general outline in accordance with the Property Misdescriptions Act (1991) only for the guidance of intending purchasers of lessees, and do not constitute any part of an offer or contract. Details are given without any responsibility, and any intending purchasers, lessees or third parties should not rely on them as inspection or otherwise as to the correctness of each of them. We have not carried out a structural survey and the services, appliances and specific fittings have not been tested. All photographs, measurements, floor plans and distances referred to are given as a guide only and should not be relied upon for the purchase of carpets or any other fixtures statements or representations of fact, but must satisfy themselves by or of fittings, gardens, roof terraces, balconies and communal gardens as well as tenure and lease details cannot have their accuracy guaranteed for intending purchasers. Lease details, service ground rent (where applicable) are given as a guide only and should be checked and confirmed by your solicitor prior to exchange of contracts. no person in the employment of Anthony Webb has any authority to make any representation or warranty whatever in relation to this property.

348 Green Lanes, Palmers Green, London N13 5TJ
020 8882 7888
palmersgreen@anthonywebb.co.uk
anthonywebb.co.uk

Anthony Webb
ESTATE AGENTS