



Lenham Road, Kingswood, Maidstone, , ME17 1LZ

Offers In Excess Of £400,000



CASH BUYERS ONLY. Welcome to Little Chippings, a charming three-bedroom detached home set within the sought-after village of Kingswood. A new access has been created from Holly Tree Close which allows for a large driveway and access to the garaging at the rear. The property is set back from Holly Tree Close, offering a high degree of privacy. Offered chain-free, it presents an excellent opportunity for buyers looking to modernise.

Upon entering, you are greeted by a light and spacious entrance hall leading into a bright breakfast area. From here, you'll find a generous sitting room and a separate dining room, providing access to the wrap-around gardens—ideal for indoor-outdoor living.

The ground floor also features a well-proportioned kitchen, a convenient W/C, and a family bathroom. In addition, there is a further reception room and a third bedroom on this level, offering flexible living arrangements—perfect for guests, a home office, or multi-generational living.

Upstairs, there are two well-sized bedrooms, both benefiting from ample eaves storage.

Externally, the standout feature of this property is the beautifully maintained wrap-around garden—an ideal space for relaxing or entertaining, enjoying sunlight throughout the day. The property also benefits from a detached double garage and off-road parking for up to three vehicles. Tenure: Freehold. Council Tax Band: E. EPC rating: D.



LOCATION:

Situated within the charming village of Kingswood, the property is ideal for families looking for peaceful surroundings while maintaining good access to local amenities and transport links. Maidstone town centre, with its array of shops, restaurants, and entertainment options, is approximately 7 miles away.

ACCOMODATION

FRIST FLOOR:

Entrance Hall

Dining Room

Sitting Room

Breakfast Room

Kitchen

Family Room

W/C

Bathroom

Bedroom 3

FRIST FLOOR:

Landing

Bedroom 1

Bedroom 2

EXTERNALLY:

Front Garden

Rear Garden

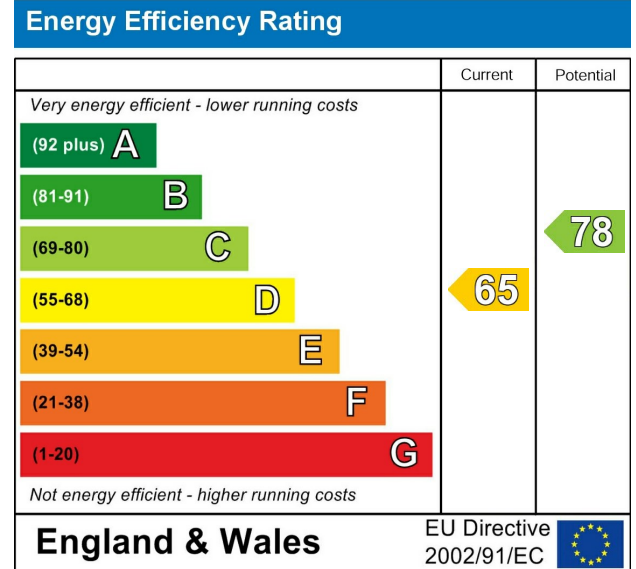
Double Garage

Summer House

Driveway

VIEWING:

Strictly by arrangement with the Agent's Bearsted
Office: 132 Ashford Road, Bearsted, Maidstone, Kent
ME14 4LX. Tel: 01622 739574.



Page & Wells limited for themselves and for the vendors of this property whose agents they are give notice that: 1. These particulars do not constitute any part of, an offer or a contract. 2. All statements contained in these particulars as to this property are made without responsibility on the part of Page & Wells Limited or the Vendor. 3. None of the statements contained in these particulars as to the property is to be relied on as statements or representations of fact. 4. Any intending purchaser must satisfy himself by inspection or otherwise as to the correctness of each of the statements contained in these particulars. 5. The vendor does not make or give, and neither Page & Wells Limited nor any person in their employment has any authority to make or give any representation whatsoever in relation to this property. These particulars are supplied on the understanding that all negotiations are carried out throughout Page & Wells Limited. Properties with a reference prefixes EAA are whose which Page & Wells Limited disclose an interest in accordance with the provisions of the Estates Agents Act 1979

Lenham Road, Kingswood, Maidstone, Kent

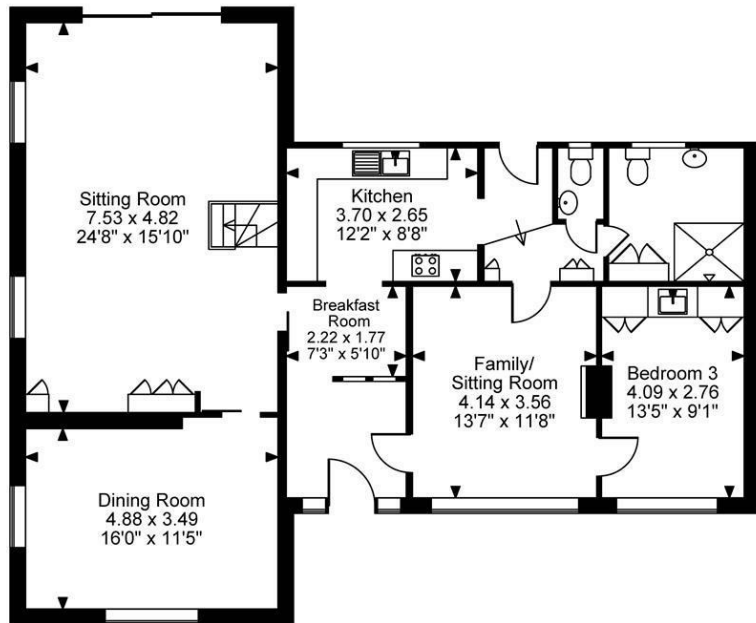
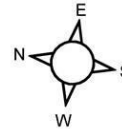
Approximate Gross Internal Area

Main House = 1583 Sq Ft/147 Sq M

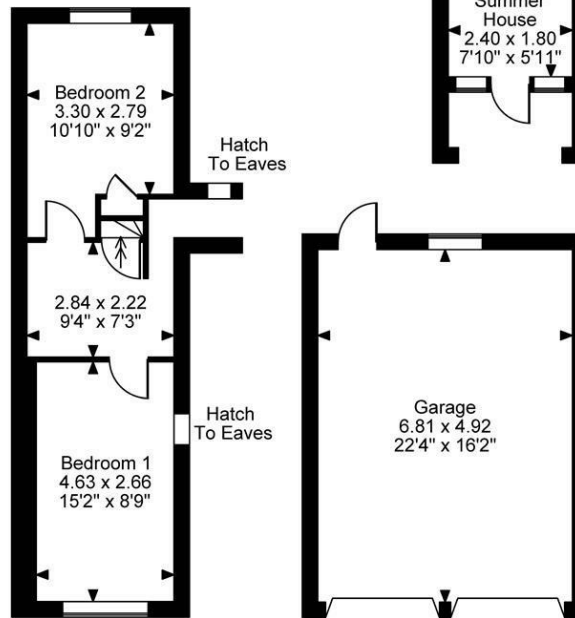
Garage = 361 Sq Ft/34 Sq M

Summer House = 47 Sq Ft/4 Sq M

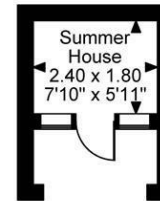
Total = 1991 Sq Ft/185 Sq M



Ground Floor



First Floor



FOR ILLUSTRATIVE PURPOSES ONLY - NOT TO SCALE

The position & size of doors, windows, appliances and other features are approximate only.

© ehouse. Unauthorised reproduction prohibited. Drawing ref. dig/8688700/LCO

