



HEARTWOOD  
HOMES



# Holmes Court, Carlisle Avenue, St. Albans, AL3 5LR

Guide Price £375,000

1 1 1



"Step into this delightful one-bedroom ground floor apartment, boasting the potential to easily convert into a two-bedroom gem. Situated in an exclusive development just a short stroll (0.3 miles!) from St. Albans bustling city centre, you're in for a treat with top-notch shopping spots, yummy eateries, and super convenient links to central London via St Pancras International.

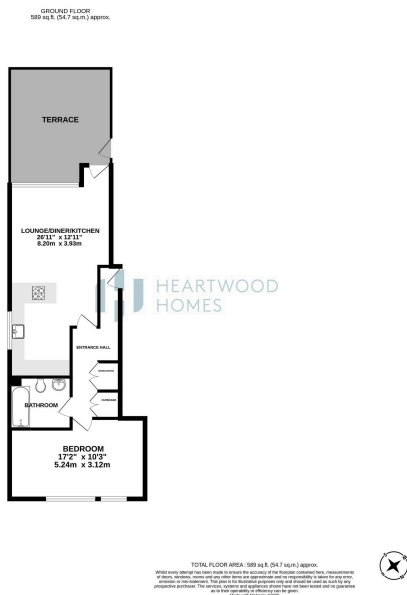
No chain? No problem! This gorgeous apartment offers spacious living, starting with a communal entrance hall featuring a secure entry door. Inside, you're greeted by a cosy entrance hall with a nifty hidden workstation and handy storage cupboard. The front opens up to a fabulous open-plan kitchen/living/dining space with direct access to the garden, decked out with a fresh bespoke kitchen, sleek built-in appliances, and a snazzy Quartz counter top with breakfast bar. Plus, there's a custom-made entertainment centre for those movie nights! At the back, you'll find a roomy double bedroom with stylish fitted wardrobes, built in drawers and panelled wall, along with a modern fitted bathroom.

Step outside and be greeted by your very own landscaped garden, complete with a chill decking area perfect for summer hangouts and a variety of pretty plants. Out back, enjoy the well-kept communal gardens, plus your very own allocated parking spot with visitor spaces available.

Don't miss out! Give us a buzz today to book your viewing appointment. Let's make this your new home sweet home!"







- Chain free
- Close to city centre and station
- Private court yard garden
- Stunning open plan living
- Communal grounds
- Potential to convert to a two bedroom (subject to permissions)
- Ultra modern
- Allocated parking
- Attractive bathroom
- EPC Grade C

