



## Longford Avenue, UB1

£2,400 Per calendar month

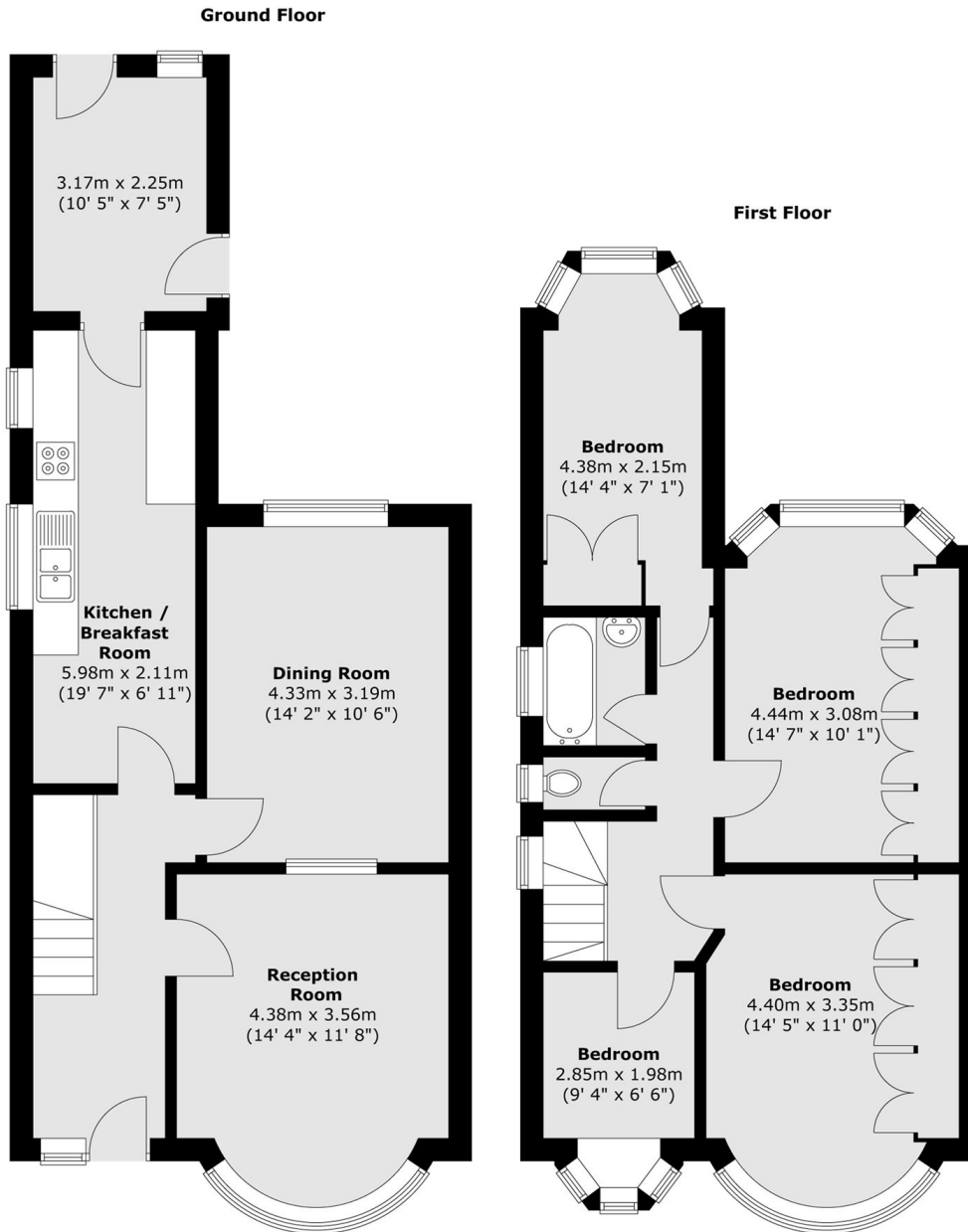
A large, well-maintained four-bedroom family home with off-street parking, a private garden, two reception rooms, and a separate kitchen. This property is ideal for a family.

Located on a quiet residential street, close to the Uxbridge Road with great bus links for access into Boston Manor and Ealing Broadway.

### Features

- Four Bedrooms
- Two Receptions
- Private Garden
- Off Street Parking
- Gas Central Heating
- Double Glazing

# Longford Avenue, Southall, UB1



Total area (approx.) : 112.1 sq. m (1207 sq. ft)