



5432 Norfolk Road, Edgbaston, Birmingham, B15 3PU  
£3,135 Per month



5432 Norfolk Road, Edgbaston, Birmingham, B15 3PU

**£3,135 Per month**

Ryland Place is a prestigious McCarthy & Stone Retirement Living PLUS development set within secure, gated grounds in the leafy and sought-after suburb of Edgbaston. Designed exclusively for those aged 70 and over, it offers the privacy of a spacious, low-maintenance apartment combined with a supportive, sociable community right outside your front door.

Each home is finished to a high specification with discreet "hidden care" features, while outstanding communal facilities include a chef-run bistro, homeowners' lounge, function room, wellness suite and beautifully landscaped gardens. With an on-site team available 24/7, one hour of weekly domestic assistance included, and tailored personal care available as needs change, Ryland Place delivers genuine independence with reassurance always on hand. Just moments from Birmingham city centre and local green spaces, this near sold-out development has only its final apartment remaining - early viewing is essential.

## Description



## Situation

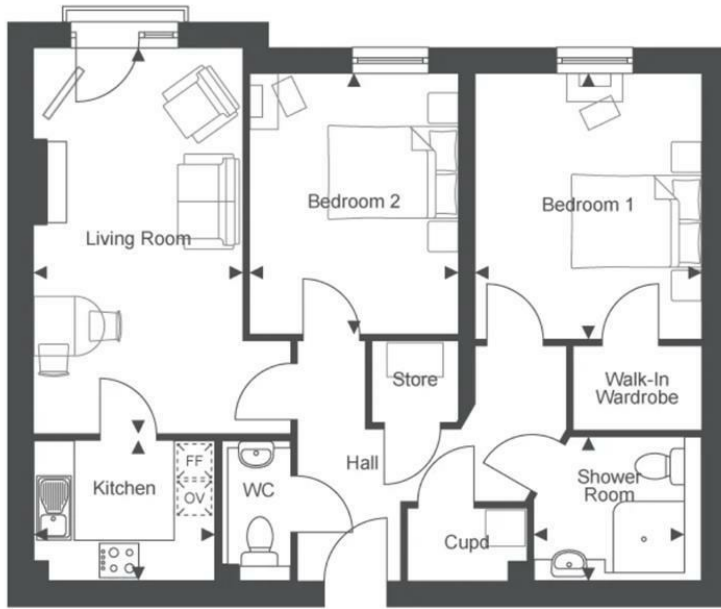


Unfurnished

Council Tax Band:

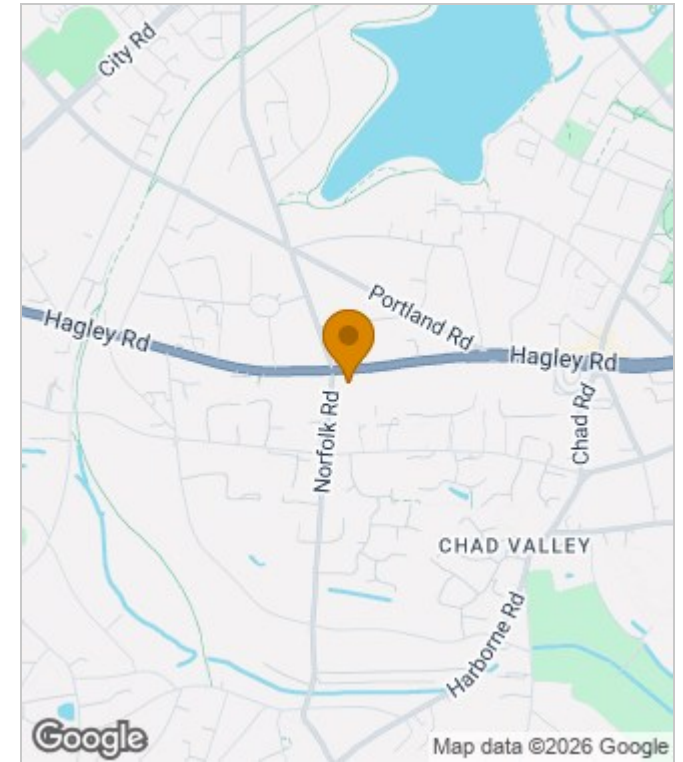
Available:

## Floor Plans

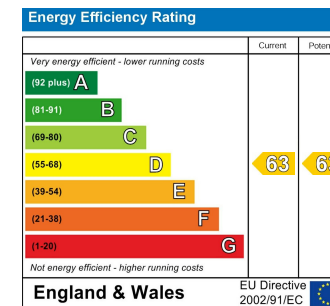


Living (Max)	10' 2" x 18' 10"	3105mm x 5735mm
Kitchen (Max)	6' 11" x 8' 10"	2100mm x 2700mm
Bedroom 1 (Max)	11' 0" x 13' 0"	3355mm x 3955mm
Bedroom 2 (Max)	10' 3" x 12' 9"	3115mm x 3880mm
Shower Room (Max)	7' 1" x 7' 4"	2145mm x 2245mm

## Area Map



## Energy Performance Graph



These particulars, whilst believed to be accurate are set out as a general outline only for guidance and do not constitute any part of an offer or contract. Intending purchasers should not rely on them as statements of representation of fact, but must satisfy themselves by inspection or otherwise as to their accuracy. No person in this firm's employment has the authority to make or give any representation or warranty in respect of the property.