



**Price**

**£225,000**

**Freehold**

2x  1x  1x 

Lower Furlongs, Brading, Sandown, Isle of  
Wight, PO36

**Pittis**   
Helping you move forwards





## Main features

- Semi detached bungalow situated in the picturesque Village of Brading
- Beautifully maintained front & rear gardens
- Offered to the market with no onward chain
- Very well presented throughout
- Located within walking distance of lovely countryside walks and also 5 minutes walk to Brading Station and all transport facilities for the Island

## Accommodation

### Hallway

Lounge: 14'1 x 10'7 (4.30m x 3.23m)

Kitchen: 10'7 x 7'2 (3.23m x 2.19m)

Bedroom 1: 14'2 x 9'1 (4.32m x 2.77m)

Bedroom 2: 9'1 x 8'7 (2.77m x 2.62m)

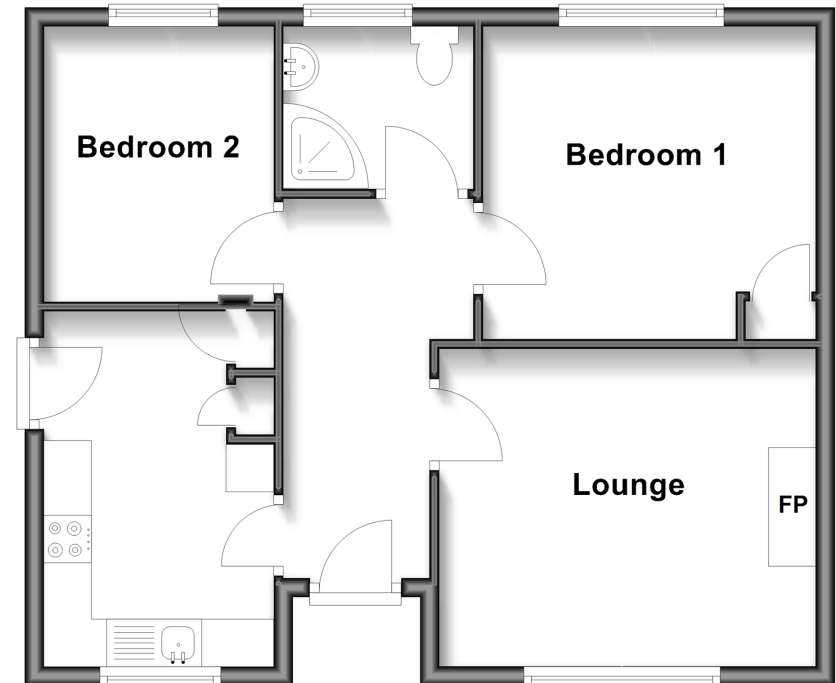
Bathroom

### OUTSIDE

Front & Rear Gardens

## Ground Floor

Approx. 53.1 sq. metres (571.9 sq. feet)



**Call Sandown - 01983 407444 ■ pittis.co.uk**

■ Legal advice should be taken to verify fixtures/fittings, planning, alterations and/or lease details

■ Appliances & services are untested, dimensions are approximate and floor plans are not to scale



60521185/20250510/DW/NR