

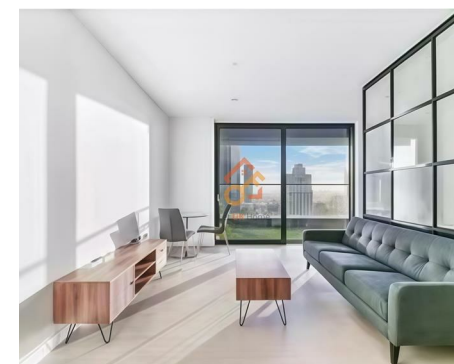
Let **UK** Home

1 Bedrooms

Flat - Studio

Located in London

**£2,499 Per Month**



[info@letukhome.co.uk](mailto:info@letukhome.co.uk)

<https://www.letukhome.co.uk/>

01795 358 886



# 2 Wards Place London

E14 9XJ



Let UK Home are excited to offer a stunning studio apartment in Hobart Building, part of the Warden development.

The flat comprises a spacious open kitchen, a magnificent living/bedroom area with a fitted wardrobe, a private balcony and one modern bathroom.

The development is fully equipped with complete facilities, including a concierge, swimming pool, spa, gym, private cinema, business lounge, sauna, steam room, and more.

The development is located in the heart of Canary Wharf, enjoying unparalleled transport connections, including the Elizabeth Line, London Underground Jubilee Line, Thames River Clippers service, and DLR, making transportation extremely convenient. The DRL station Heron Quays and the tube station Canary Wharf (Jubilee Line) are easily accessible on foot. Canary Wharf train station is also within walking distance, allowing easy travel to other cities in the UK.

The development is close to several renowned universities. You can walk to the London Business School, and use public transport to quickly reach King's College London (KCL), London School of Economics and Political Science (LSE), University College London (UCL), Imperial College London (IC), Queen Mary University of London, University of Greenwich, Goldsmiths University of London, City, University of London, and other prestigious institutions.

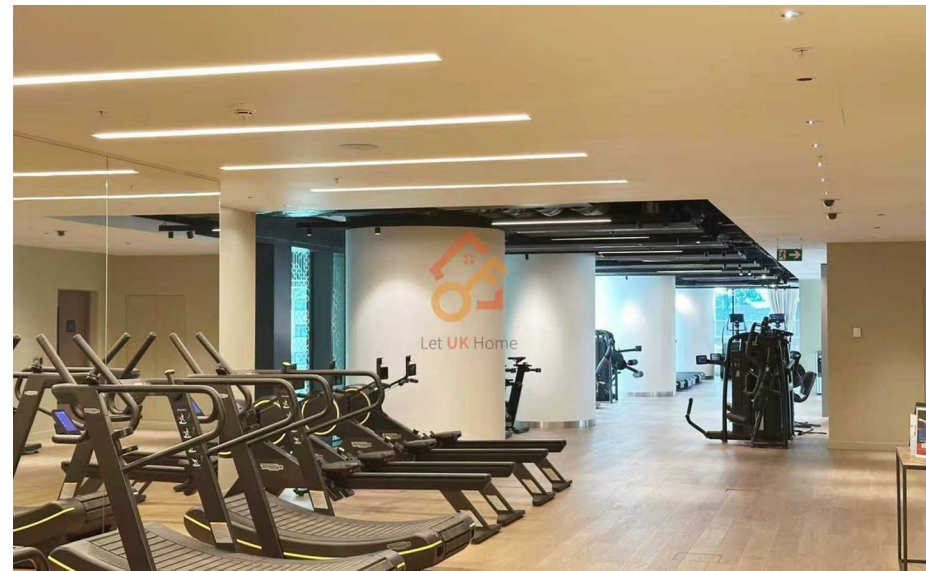
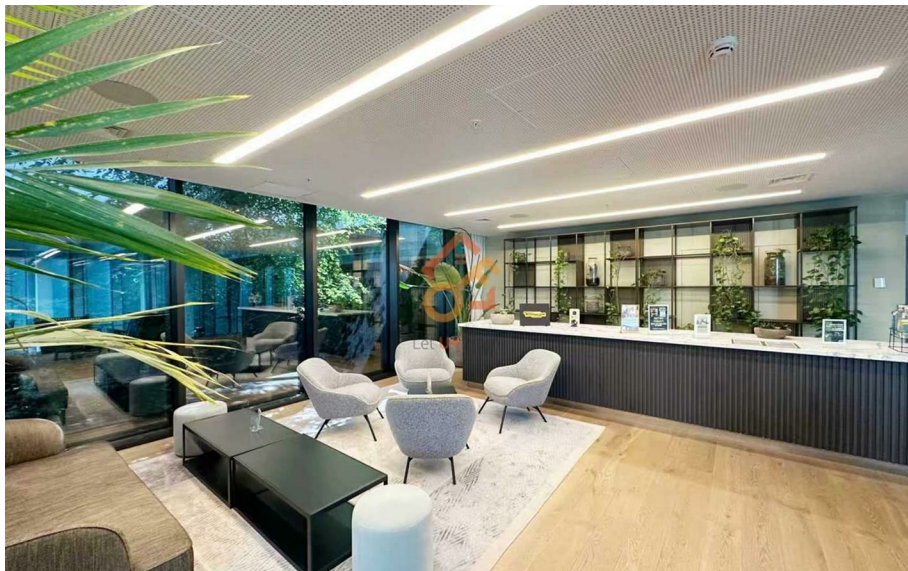
Situated in the prime area of central London, the development is surrounded by

# 2 Wards Place London

£2,499 Per Month

- 27th Floor
- 24h Security
- Swimming
- The Gym
- Business Lounge

- Concierge Service
- The Spa
- Cinema & Game Room
- Sauna & Steam Room
- EPC Rating: B





Let **UK** Home

3F 2 Eastbourne Terrace  
 Paddington  
 London  
 W2 6LG

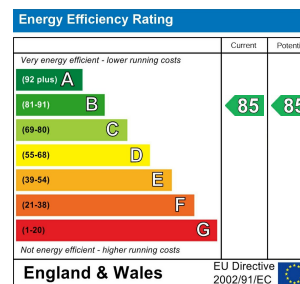
01795 358 886

info@letukhome.co.uk

**Council Tax Band: E**

**Local Authority:**

Agents Note: Whilst every care has been taken to prepare these particulars, they are for guidance purposes only. All measurements are approximate and are for general guidance purposes only and whilst every care has been taken to ensure their accuracy, they should not be relied upon and potential buyers/tenants are advised to recheck the measurements.



<https://www.letukhome.co.uk/>