



**Edith Cavell Close, Wymondham NR18 0YL**

**welcome to**

**Edith Cavell Close, Wymondham**

William H Brown are pleased to present this beautifully modernised four-bedroom detached home, finished to an exceptional standard throughout. The property offers a welcoming entrance hall, spacious lounge, impressive open-plan kitchen/diner, a useful study, and a convenient downstairs cloakroom.



## Description

William H Brown are delighted to present this stunning four-bedroom detached home, beautifully finished to an exceptional standard throughout.

The property welcomes you with a bright and spacious entrance hall leading to a generous lounge, perfect for relaxing or entertaining. The impressive open-plan kitchen/diner forms the heart of the home, offering a stylish and functional space ideal for family life and social gatherings. A versatile study provides the perfect spot for home working, along with a convenient downstairs cloakroom completing the ground floor.

Upstairs, the property continues to impress with four double bedrooms. The master bedroom boasts its own ensuite, offering comfort and privacy. Bedroom two benefits from built-in wardrobes, providing excellent storage. The remaining bedrooms are generously sized, making them ideal for family members or guests.

Outside, the home features a spacious driveway offering ample off-road parking, along with a single garage for additional parking or storage.

This exceptional property combines modern style, generous living space, and practical family comfort—an ideal home ready to move straight into.

## Study

Double glazed front facing window

## Cloakroom

W.C and sink complete with half tiled walls

## Lounge

Two double windows front facing and radiator, with feature electric fireplace

## Kitchen/Diner

Open plan space with tiled flooring, space for 6 seater dining table. Complete with wall and base level units, with integrated dishwasher, fridge freezer and washing machine. Double oven and extractor fan with gas hob and french doors leading to the garden

## Bedroom One

Double bedroom with front facing window and radiator

## En-Suite

Complete with shower, sink and W.C

## Bedroom Two

Double bedroom with built in wardrobes and radiator

## Bedroom Three

Double bedroom with rear facing window and radiator

## Bedroom Four

Single bedroom with front facing window and radiator

## Bathroom

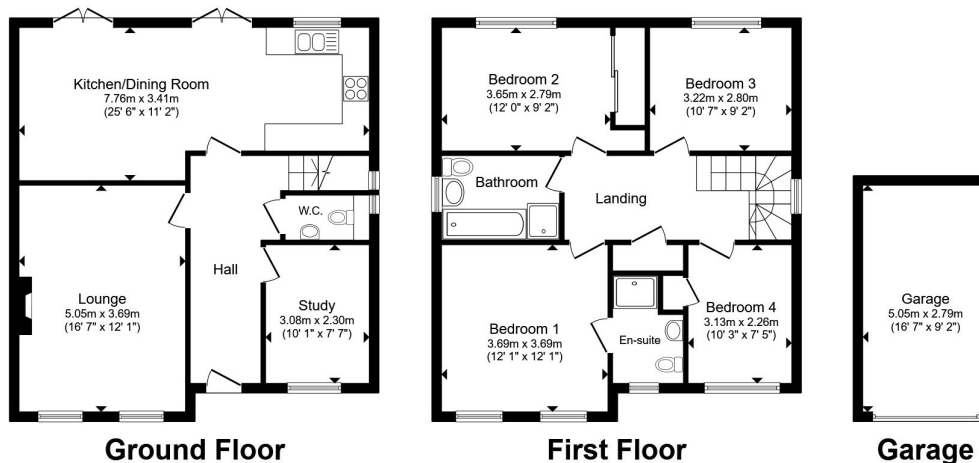
Three-piece suite plus walk in shower

## Front Garden

Small lawn area, low maintenance and driveway

## Rear Garden

Shingled garden with patio area, low maintenance



Total floor area 141.6 m<sup>2</sup> (1,524 sq.ft.) approx

This floor plan is for illustrative purposes only. It is not drawn to scale. Any measurements, floor areas (including any total floor area), openings and orientation are approximate. No details are guaranteed, they cannot be relied upon for any purpose and they do not form part of any agreement. No liability is taken for any error, omission or misstatement. A party must rely upon its own inspection(s). Powered by [www.propertybox.io](http://www.propertybox.io)

  
william  
h brown



**view this property online** [williamhbrown.co.uk/Property/WYM109070](http://williamhbrown.co.uk/Property/WYM109070)



welcome to

## Edith Cavell Close, Wymondham

- Stunning 4-Bedroom Detached Family Home
- Spacious Lounge
- Open-plan Kitchen/Diner
- En-suite
- Single Garage
- Driveway

Tenure: Freehold EPC Rating: B

Council Tax Band: E

offers in excess of

**£375,000**



Please note the marker reflects the postcode not the actual property

**view this property online** [williamhbrown.co.uk/Property/WYM109070](https://www.williamhbrown.co.uk/Property/WYM109070)



Property Ref:  
WYM109070 - 0004

1. MONEY LAUNDERING REGULATIONS Intending purchasers will be asked to produce identification documentation at a later stage and we would ask for your co-operation in order that there is no delay in agreeing the sale. 2. These particulars do not constitute part or all of an offer or contract. 3. The measurements indicated are supplied for guidance only and as such must be considered incorrect. Potential buyers are advised to recheck measurements before committing to any expense. 4. We have not tested any apparatus, equipment, fixtures or services and it is in the buyers interest to check the working condition of any appliances. 5. Where an EPC, or a Home Report (Scotland only) is held for this property, it is available for inspection at the branch by appointment. If you require a printed version of a Home Report, you will need to pay a reasonable production charge reflecting printing and other costs. 6. We are not able to offer an opinion either written or verbal on the content of these reports and this must be obtained from your legal representative. 7. Whilst we take care in preparing these reports, a buyer should ensure that his/her legal representative confirms as soon as possible all matters relating to title including the extent and boundaries of the property and other important matters before exchange of contracts.

William H Brown Corp is a trading name of Sequence (UK) Limited which is registered in England and Wales under company number 4268443, Registered Office is Cumbria House, 16-20 Hockliffe Street, Leighton Buzzard, Bedfordshire, LU7 1GN. VAT Registration Number is 500 2481 05.

 **william h brown**  
Incorporating  
**Porter  
Glenny**



**01953 602578**



[Wymondham@williamhbrown.co.uk](mailto:Wymondham@williamhbrown.co.uk)



27 Market Street, WYMONDHAM, Norfolk,  
NR18 0AJ



[williamhbrown.co.uk](https://www.williamhbrown.co.uk)