



2 Bed House - Terraced

58 Redshaw Street
Derby
DE1 3SG

£750 Per Month

Fletcher
& Company

58 Redshaw Street
Derby
DE1 3SG



- Available Immediately
- Council Tax Band A
- Two Double Bedrooms
- Two Reception Rooms Offering Flexible Living
- Good Size Kitchen With Space For Appliances
- Large Family Bathroom
- Low Maintenance Rear Garden
- On Street Parking
- Close To Local Amenities
- Close To Major Road Networks

Available Immediately - Situated within the ever popular Kedleston Road area of Derby, this two bedroom traditional mid terraced property offers spacious and versatile accommodation.

The property briefly comprises an entrance hallway leading to a comfortable front living room, together with a separate dining room which could equally be utilised as a home office, study or occasional third bedroom. To the rear is a fitted kitchen offering a range of wall and base units with space for appliances and access to the cellar.

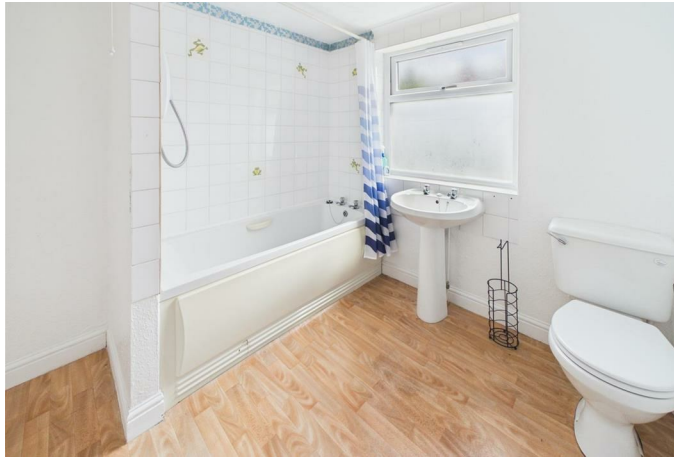
To the first floor are two well proportioned bedrooms, both offering excellent space and natural light. There is a generously sized family bathroom with shower over bath,

Externally, the property benefits from a low-maintenance enclosed rear garden, providing a pleasant outdoor seating area with minimal upkeep required. On street parking is available to the front of the property.

Redshaw Street enjoys a highly convenient position just off Kedleston Road, one of Derby's most sought after residential locations. A wide range of local amenities can be found within walking distance, including supermarkets, convenience stores, cafés, takeaways and leisure facilities. The property is also ideally placed for access to the University of Derby, Derby City Centre and the beautiful open spaces of Markeaton Park.

Excellent transport connections are available nearby, with straightforward access to the A38, A52 and Derby Ring Road, making commuting to surrounding towns, business parks and major employers particularly convenient. Regular public transport services operate close by, providing quick and easy access throughout Derby and beyond.

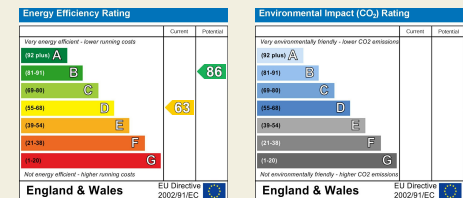




15 Melbourne Court
Millennium Way
Pride Park
Derby
DE24 8LZ

T: 01332 300558

E: derby@fletcherandcompany.co.uk
www.fletcherandcompany.co.uk



These particulars do not constitute an offer or a contract neither do they form part of an offer or contract. The vendor does not make or give and Messrs. Fletcher & Company nor any person employed has any authority to make or give any representation or warranty, written or oral, in relation to this property. Whilst we endeavour to make our sales details accurate and reliable, if there is any point which is of particular importance to you, please contact the office and we will be pleased to check the information for you, particularly if contemplating travelling some distance to view the property. None of the services or appliances to the property have been tested and any prospective purchasers should satisfy themselves as to their adequacy prior to committing themselves to purchase.

Fletcher
& Company