



**Price**  
**£385,000**

**Freehold**

3x  1x  1x 

**David Avenue,  
Wickford, Essex, SS11**



## Main features

- Ideal family home
- Offered with no onward chain
- Situated in a quiet road
- Excellent size rear garden
- Off street parking and garage
- Within walking distance of the High Street and railway station

## Accommodation

### GROUND FLOOR

Hallway

Lounge : 13'4 x 11'2 (4.07m x 3.41m)

Dining Area: 12'5 x 8'10 (3.79m x 2.69m)

Kitchen: 11'11 x 8'4 (3.63m x 2.54m)

### FIRST FLOOR

Landing

Bedroom 1: 11'11 x 11'4 (3.63m x 3.46m)

Bedroom 2: 12'10 x 10'4 (3.91m x 3.15m)

Bedroom 3: 8'10 x 6'10 (2.69m x 2.08m)

Family Shower Room

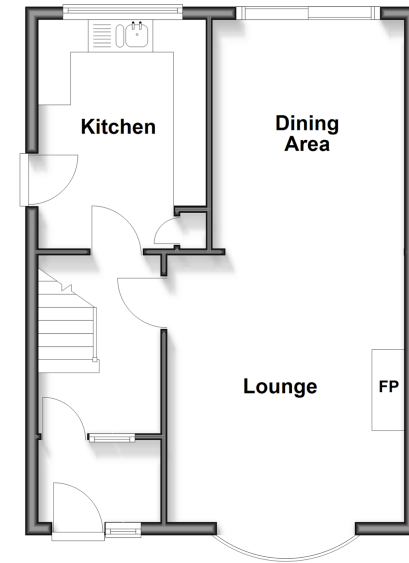
### OUTSIDE

Rear Garden

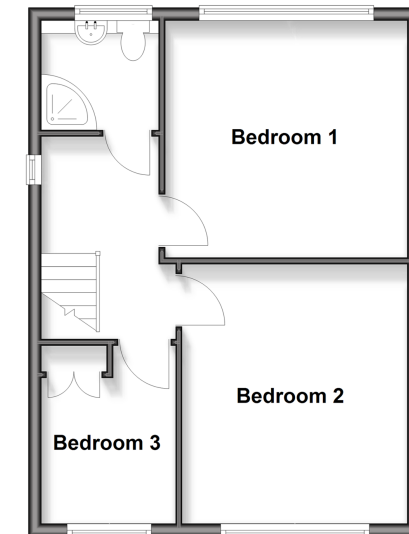
Off Street Parking

Garage

**Ground Floor**  
Approx. 44.1 sq. metres (474.9 sq. feet)



**First Floor**  
Approx. 43.9 sq. metres (472.8 sq. feet)



**Call Wickford - 01268 561287 ■ [douglasallen.co.uk](http://douglasallen.co.uk)**

- Legal advice should be taken to verify fixtures/fittings, planning, alterations and/or lease details
- Appliances & services are untested, dimensions are approximate and floor plans are not to scale



53413288/20260131/RP/BH