



Cromwell Road, SW7

£625 Per week

A well-presented one bedroom apartment located within a popular residential development in South Kensington. The property offers an entrance hall, a separate kitchen with integrated appliances, a reception room with French doors opening onto a large private balcony, a double bedroom with built-in wardrobes, and a bathroom.

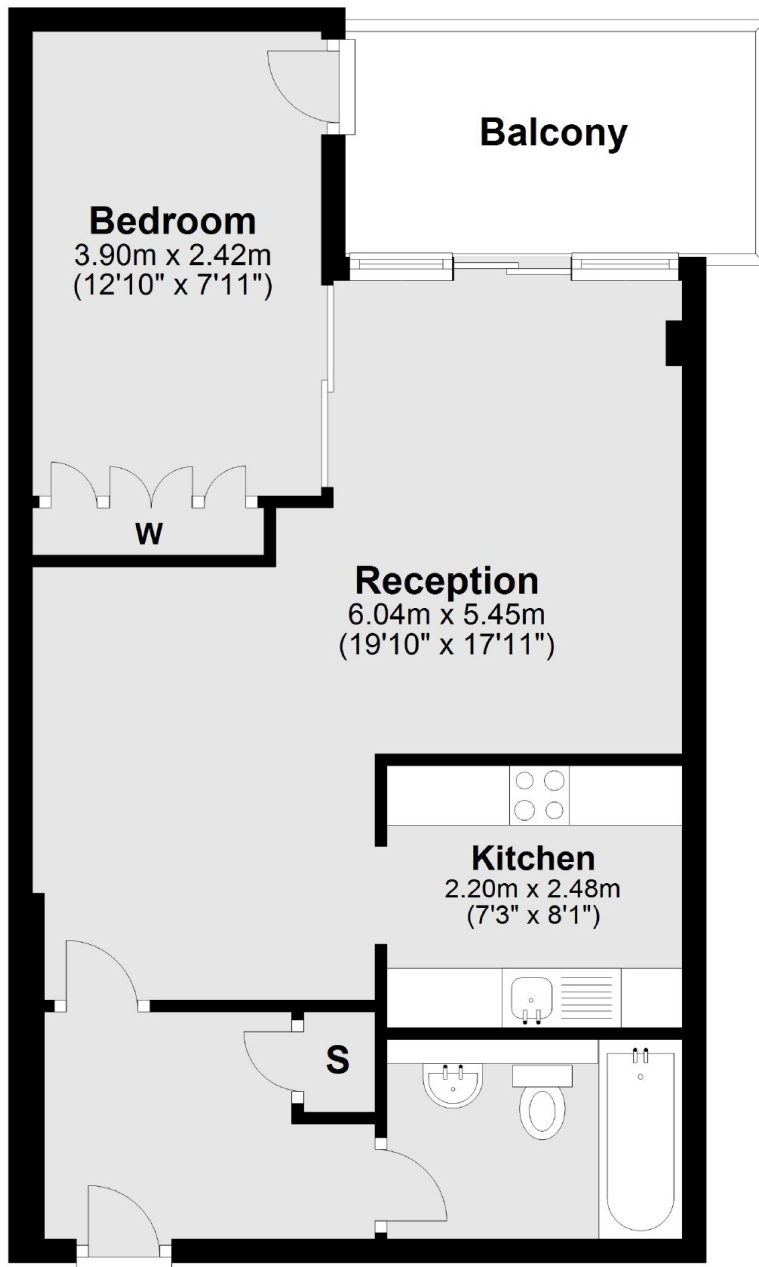
The property further offers wooden flooring throughout, a 24-hour porter service, and a convenient location close to Harbour Club, Hyde Park, and Gloucester Road Underground station.

Features

- One Double Bedroom
- Built-in Storage
- 24-hour Porter
- Private Balcony
- Separate Kitchen
- Lift Access

Cromwell Road, London, SW7

Second Floor



Main area: Approx. 48.9 sq. metres (526.2 sq. feet)

Plus balconies, approx. 6.6 sq. metres (71.2 sq. feet)