

1 Lanchester Way London

This stunning one bedroom apartment set within the luxury development Lexington Gardens, The Residence. Situated in Nine Elms, close to Vauxhall and Nine Elms Stations, this well appointed property is conveniently located for transport links to the City.

The property has been finished to the highest standard, with a spacious, light filled kitchen/living space, including underfloor heating, a combination washer/dryer and dishwasher.

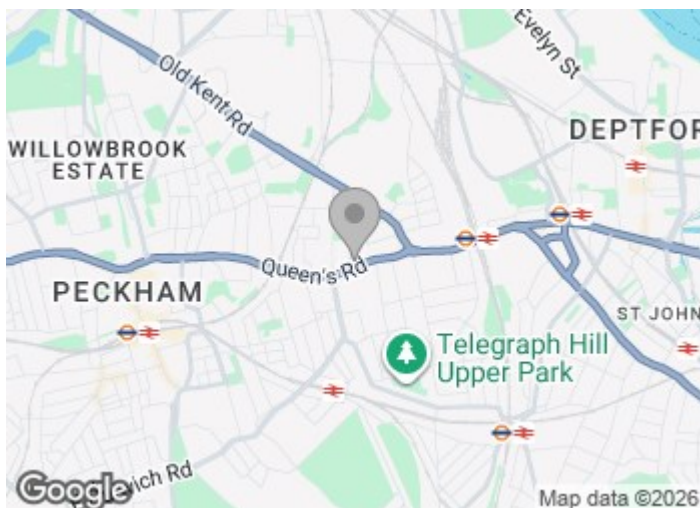
Residents will also benefit from the excellent communal amenities, including the 24 hour concierge service, a residents gym, media lounge and conference room.

£650 Per Week

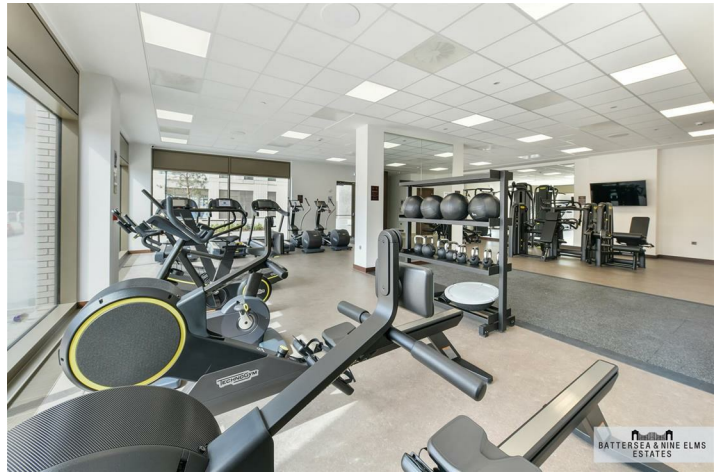
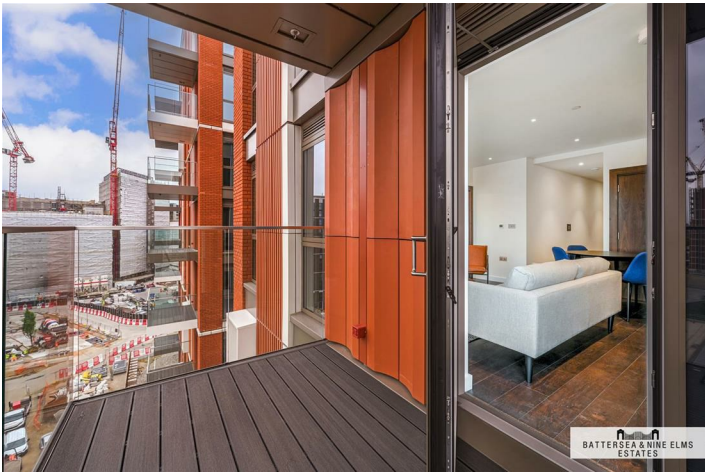
1 Lanchester Way London



- One bedroom
- Residents' Gym
- Communal Roof Gardens
- One bathroom
- Media Lounge
- 24 Hour concierge
- Podium Gardens



[Directions](#)



Kennedy Building

Approximate Gross Internal Area
42.4 sq m / 456 sq ft

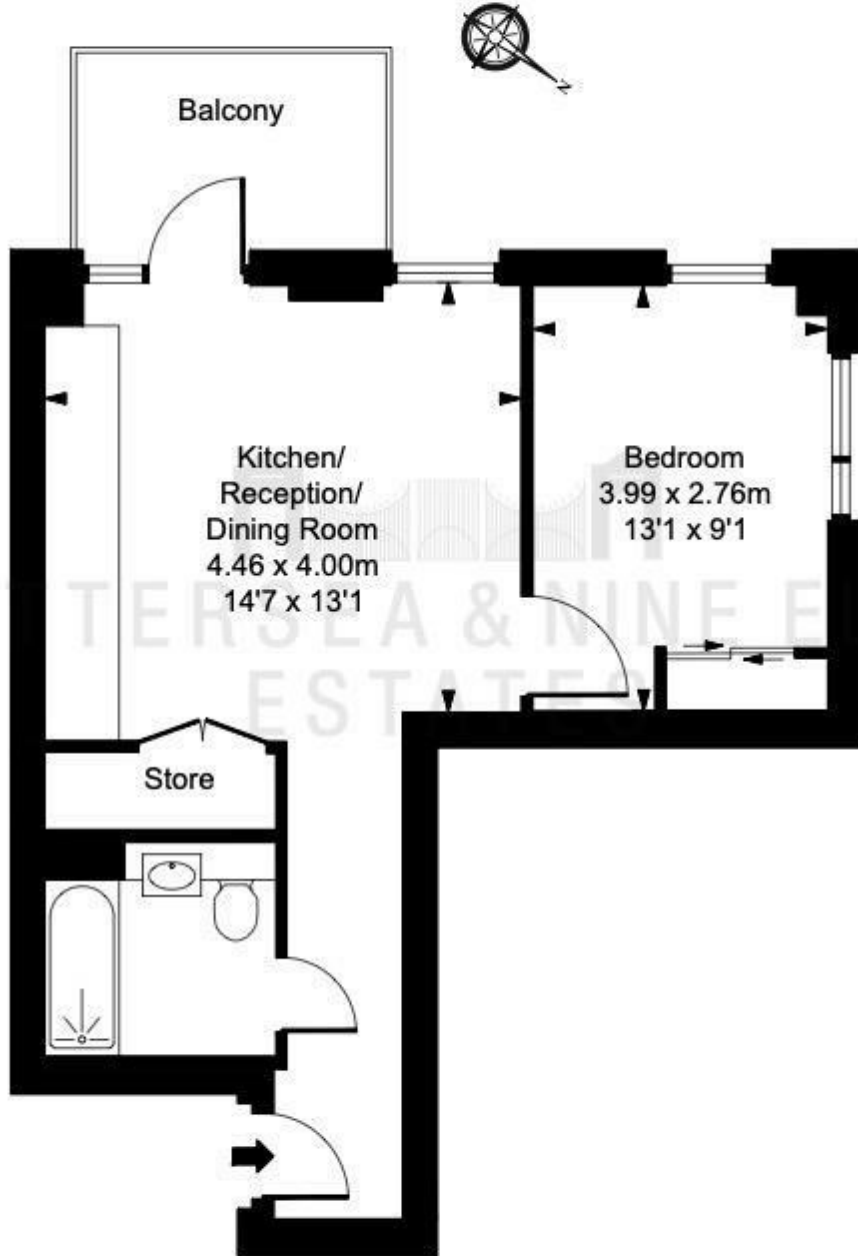


ILLUSTRATION FOR IDENTIFICATION PURPOSES ONLY
ALL MEASUREMENTS AND AREA FIGURES SUPPLIED BY OTHERS, ACCURACY IS NOT GUARANTEED.
THIS PLAN MUST NOT BE REPRODUCED BY ANY OTHER PERSON WITHOUT PERMISSION

These particulars, whilst believed to be accurate are set out as a general outline only for guidance and do not constitute any part of an offer or contract. Intending purchasers should not rely on them as statements of representation of fact, but must satisfy themselves by inspection or otherwise as to their accuracy. No person in this firm's employment has the authority to make or give any representation or warranty in respect of the property.

