



## ST STEPHENS GARDENS, W2

£1,850,000

Floor to ceiling windows  
Generous entertaining space  
Split level  
Two terraces  
Excellent condition  
Garden Square

@marshandparsons  
marshandparsons.co.uk

MARSH &  
PARSONS



# ABOUT THE PROPERTY

A spectacular split level first floor apartment with two terraces in the heart of Notting Hill.

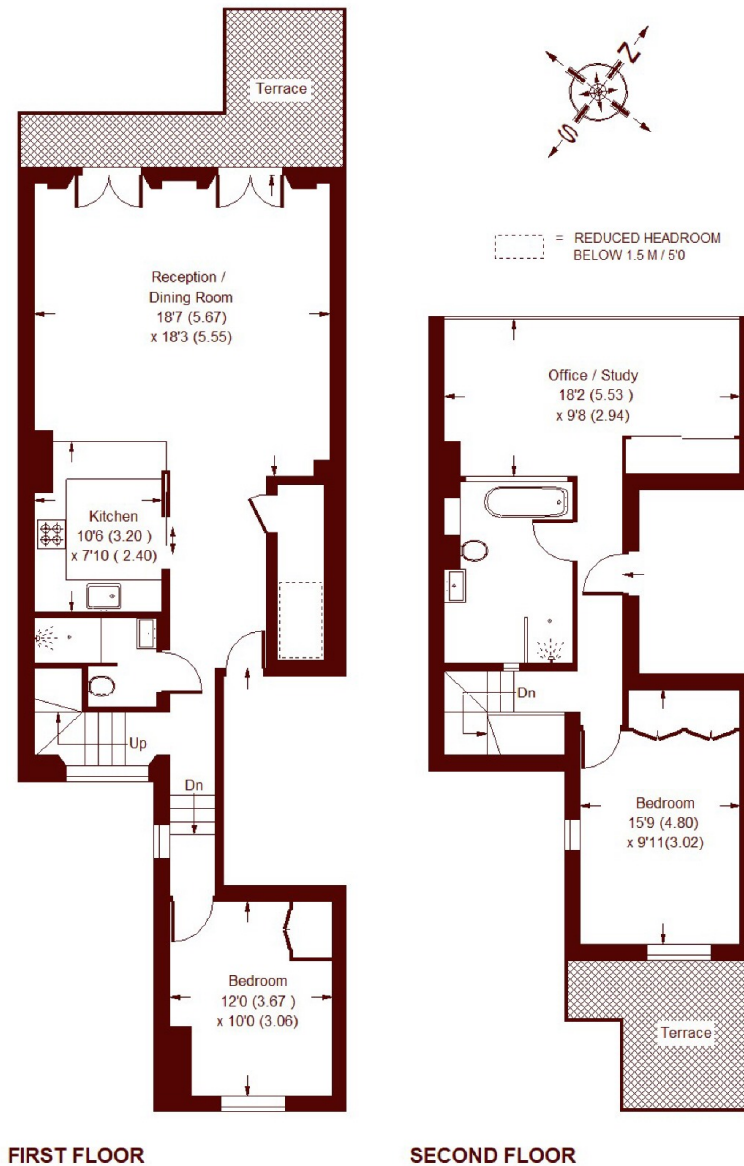
St Stephens Gardens is ideally located on a quiet garden square, just a short stroll from the fantastic array of fashionable cafés, restaurants, and boutique shops of Westbourne Grove whilst the trendy gastro pubs such as The Westbourne and The Cow are also nearby. The closest tube station is Royal Oak providing easy access to the Circle, and Hammersmith & City line.



# STEP INSIDE ST STEPHENS GARDENS

## Stephens Gardens, W2

APPROX. GROSS INTERNAL FLOOR AREA  
1240 SQFT / 115.2 SQM



Whilst every attempt has been made to ensure the accuracy of the floor plan, measurements are approximate and not to scale.  
No guarantee is given on the total square footage of the property quoted on the plan. Figures given are for guidance.  
Plan is for illustration purposes only, not to be used for valuations.

Notting Hill  
020 7313 2890

Energy Rating: C We aim to make our particulars both accurate and reliable. However, they are not guaranteed; nor do they form part of an offer or contract. If you require clarification on any points then please contact us, especially if you're traveling some distance to view. Please note that appliances and heating systems have not been tested and therefore no warranties can be given as to their good working order

MARSH &  
PARSONS