



Manor House, Broadacre Place Alderley Edge, SK9 7GR

£1,250 Per Calendar Month

- Spacious apartment
- Moments from Wilmslow and Alderley Edge town centre
- Spacious master En-suite bedroom
- Unfurnished
- Parking included along with communal visitor parking
- Open plan kitchen and lounge area
- Double bedroom and a family bathroom

PROPERTY SUMMARY

This spacious first floor apartment with parking is located close to both Alderley Edge village centre, and Wilmslow town centre.

The property offers spacious accommodation and briefly comprises: Entrance hallway; open plan hall/dining room, lounge with feature fireplace; Spacious dining kitchen. Main bedroom with en-suite shower room; second double bedroom; main bathroom with shower over the bath.

Allocated parking, plus communal visitors parking; communal garden to the front of the building.

2



2



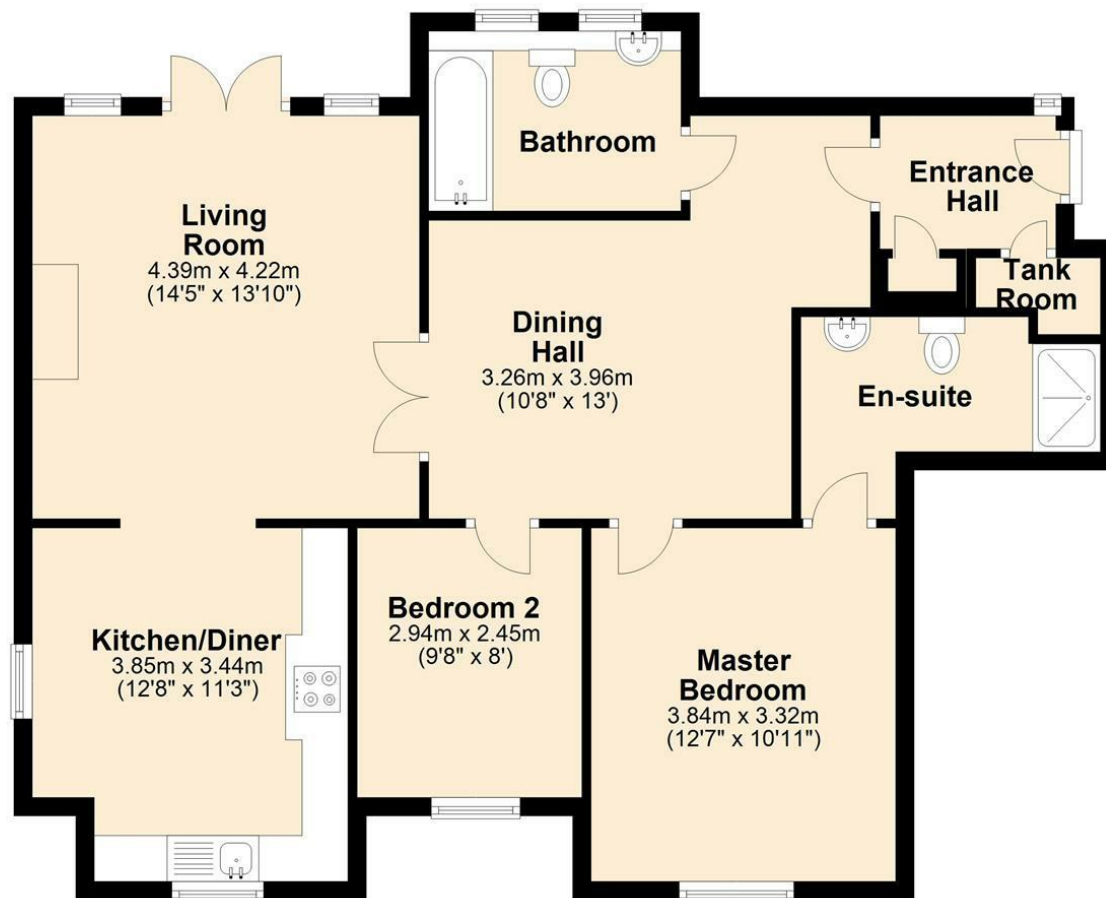
2





Ground Floor

Approx. 85.0 sq. metres (915.1 sq. feet)



Measurements are approximate. Floor plans are not to scale and for illustrative purposes only.
Plan produced using PlanUp.

Council Tax Band:

Tax Band E

Tenure:

Local Authority:

Cheshire east

Energy Efficiency Rating		
	Current	Potential
Very energy efficient - lower running costs		
(92 plus) A		
(81-91) B		
(69-80) C	74	76
(55-68) D		
(39-54) E		
(21-38) F		
(1-20) G		
Not energy efficient - higher running costs		
England & Wales	EU Directive 2002/91/EC	

Agents Note: Whilst every care has been taken to prepare these sales particulars, they are for guidance purposes only. All measurements are approximate and for general guidance purposes only and whilst every care has been taken to ensure their accuracy, they should not be relied upon and potential buyers are advised to recheck the measurements.



Cheshire Office:

Blackbox
Beech Lane
Wilmslow
Cheshire SK9 5ER

Email:

sales@benzonbunch.co.uk

Telephone:

01625 523605

Website:

<https://www.bensonbunch.co.uk>