

# Northcote, 86 Rickmansworth

Pinner • • HA5 3TW  
Asking Price: £290,000



coopers  
est 1986

# Northcote, 86 Rickmansworth

Pinner • • HA5 3TW

This second-floor flat in central Pinner is the perfect property for first-time buyers or investors alike.

Spacious throughout and well maintained, it benefits from residents' parking and is offered with no onward chain. Ideally located within close proximity to both Pinner and Northwood Hills High Streets, as well as Pinner Wood Primary School and Northwood High School nearby.

Second Floor Flat

Two Double Bedrooms

Newly Refurbished Communal Areas

Family Bathroom

Close to Local Amenities

Spacious Reception Room

No Onward Chain

Fitted Kitchen

Residents Parking

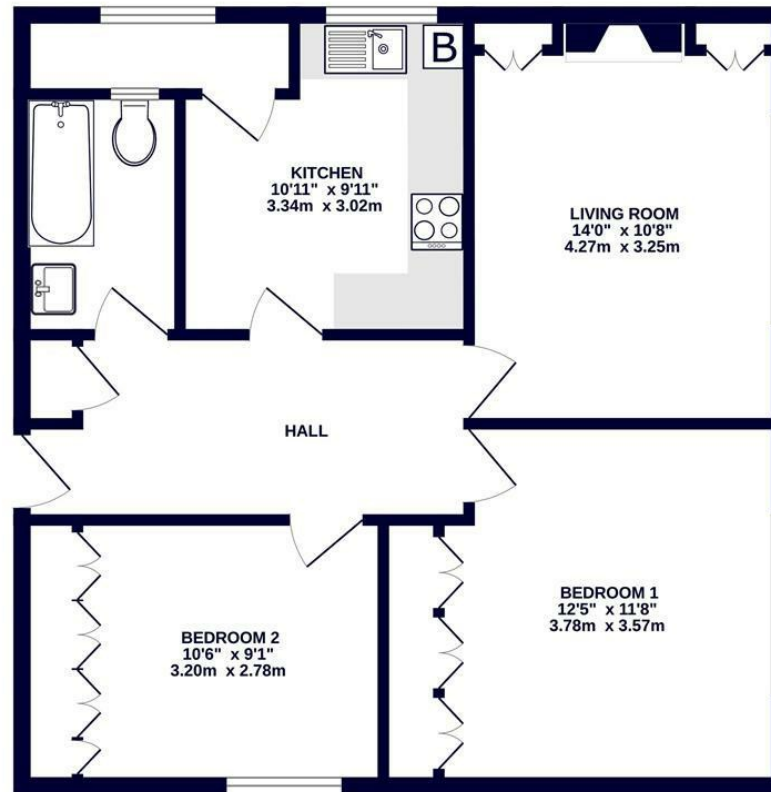
Approx Area: 681 sq ft

These particulars are intended as a guide and must not be relied upon as statements of fact. Your attention is drawn to the Important Notice on the last page.





2ND FLOOR  
681 sq.ft. (63.3 sq.m.) approx.

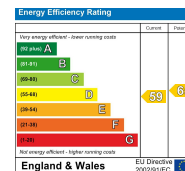


TOTAL FLOOR AREA: 681 sq.ft. (63.3 sq.m.) approx.  
Whilst every attempt has been made to ensure the accuracy of the floorplans contained here, measurements of doors, windows, rooms and any other items are approximate and no responsibility is taken for any error, omission or mis-statement. This plan is for illustrative purposes only and should be used as such by any prospective purchaser. The services, systems and appliances shown have not been tested and no guarantee as to their operability or efficiency can be given.  
Made with Metropix ©2025



18 Bridge Street, Pinner,  
Middlesex, HA5 3JF  
pinner@coopersresidential.co.uk

CoopersResidential.co.uk



Important Notice: These particulars, whilst believed to be accurate are set out as a general outline only for guidance and do not constitute any part of an offer or contract. Intending purchasers should not rely on them as statements or representation of fact, but must satisfy themselves by inspection or otherwise has the authority to make or give any representation or warranty in respect of the property.