



Offers Over £350,000 Freehold  
 LAND AT ORCHARD MEWS | PINXTON | NOTTINGHAM | NG16 6HG



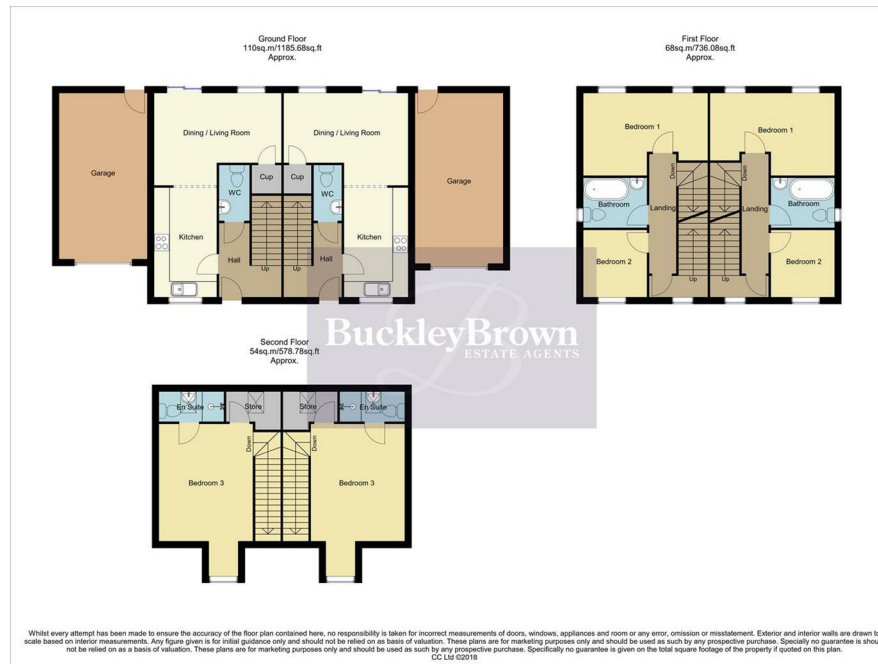
FULL PLANNING PERMISSION GRANTED!...This site comprises of two parcels of land totalling 0.61 acres in the village of Pinxton, which is ideally situated next to the M1, offering excellent transport links.

The site is freehold with vacant possession and has full planning permission granted for the development of 8, three bedroom semi detached houses and garages, creating a fantastic opportunity for investors and developers.

The site also benefits from its own private road offering access directly to both parcels and land.

You will be able to find the full planning application under the reference of 22/00367/FUL granted by Bolsover District Council.

Call the office today on 01623 633633 to discuss in more depth!



## BuckleBrown Estate Agents

55 - 57 Leeming Street | Mansfield | Nottinghamshire | NG18 1ND

23 High Street | Edwinstowe | Nottinghamshire | NG21 9QP

1 Market Place | Bolsover | Chesterfield | S44 6PN

[www.bucklebrown.co.uk](http://www.bucklebrown.co.uk)

t: 01623 633 633

t: 01623 633 633

t: 01246 605121



**IMPORTANT:** we would like to inform prospective purchasers that these sales particulars have been prepared as a general guide only. A detailed survey has not been carried out, nor the services, appliances and fittings tested. Room sizes should not be relied upon for furnishing purposes and are approximate. If floor plans are included, they are for guidance only and illustration purposes only and may not be to scale. If there are any important matters likely to affect your decision to buy, please contact us before viewing the property.