



Guide Price
£400,000

Freehold

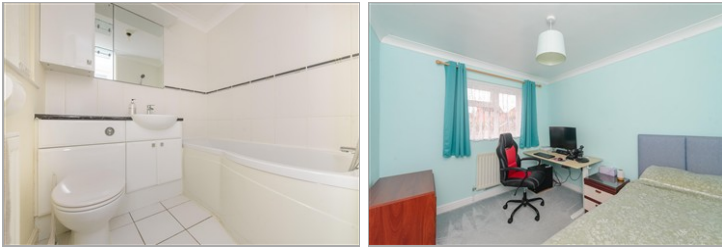
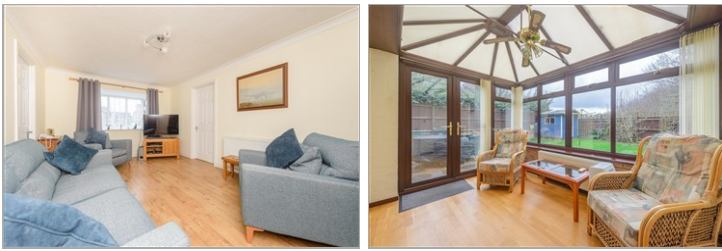
2x  2x  2x 

**Willowside, Snodland,
Kent, ME6**

OVER 60?

Secure this property
for up to **59% less!**

Wards
Helping you move forwards



Main features

- Great sized detached bungalow in a tucked away spot
- Private and good sized garden
- Easy parking waiting for you after a long day
- Super flexible living to suit you and your family
- Immaculate throughout and ready to move straight into

Accommodation

GROUND FLOOR

Entrance Hall

Lounge: 16'9 x 11'0 (5.11m x 3.36m)

Dining Room: 9'3 x 8'6 (2.82m x 2.59m)

Conservatory: 11'7 x 8'10 (3.53m x 2.69m)

Kitchen: 17'2 x 7'10 (5.24m x 2.39m)

Utility Room: 8'3 x 6'3 (2.52m x 1.91m)

Bedroom 1: 17'2 x 12'4 (5.24m x 3.76m)

En-Suite Shower Room: 8'9 x 6'4 (2.67m x 1.93m)

Bedroom 2: 9'10 x 8'9 (3.00m x 2.67m)

Bathroom: 6'2 x 5'5 (1.88m x 1.65m)

OUTSIDE

Front and Rear Gardens

Driveway

Ground Floor
Approx. 96.8 sq. metres (1042.4 sq. feet)



Call Snodland - 01634 245055 ■ wardsof Kent.co.uk

- Legal advice should be taken to verify fixtures/fittings, planning, alterations and/or lease details
- Appliances & services are untested, dimensions are approximate and floor plans are not to scale
- Through a Homewise Home For Life Plan people aged 60+ can secure this property for up to 59% less, by purchasing a Lifetime Lease



13821923/20260228/CG/LK