



Let **UK** Home

1 Bedrooms

Flat

**Located
in Birmingham**

£1,180 Per Month



pmadmin@letukhome.co.uk

<https://www.letukhome.co.uk/>

0121 828 8955



1 Pitt Street Birmingham

B4 7FH



Let UK Home are excited to offer a delicate one bedroom apartment in Ashted Wharf, part of the Glasswater Locks development.

This stunning split-level loft apartment features a thoughtfully designed, flowing layout. Upon entry, a welcoming hallway leads to a modern bathroom and a handy utility room, while the heart of the home is the expansive open-plan kitchen and living area. Boasting soaring ceilings and a sleek contemporary kitchen, this bright, airy space is perfect for both relaxing and entertaining. A mezzanine level with a stylish white balustrade adds architectural depth and flexible living space, creating a seamless blend of style and functionality throughout.

The Glasswater Locks development will offer a wealth of public facilities and concierge services. Residents here can join The Canal Side Club, which provides a variety of amenities including a residents' lounge, library, meeting rooms, gym, game room, and private cinema.

The Glasswater Locks development is located in the city's well-known Learning Quarter, close to five universities in Birmingham. It is very convenient to get to the University of Birmingham, Aston University, Birmingham City University, Newman University, and Birmingham Institute of Art and Design.

All three main railway stations in Birmingham city—New Street Station, Moor Street Station, and Snow Hill Station—are within walking distance.

The development's location is equally compelling. Perfectly positioned in one of

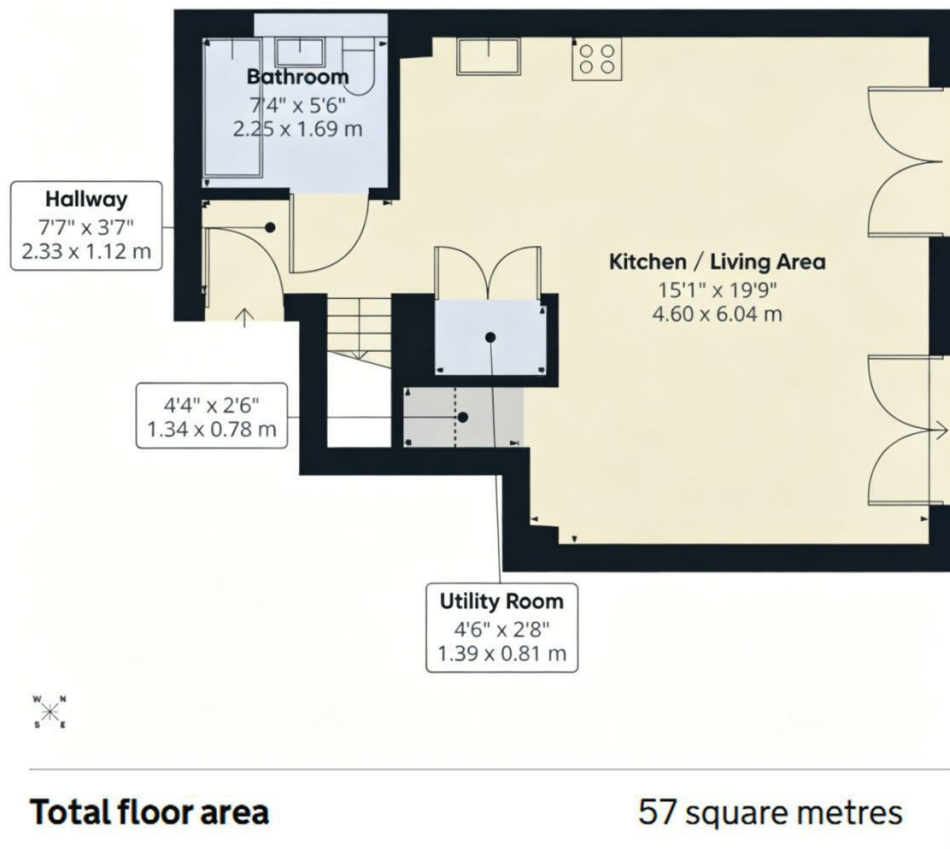
1 Pitt Street Birmingham

£1,180 Per Month



- 8th Floor
- Residents Lounge
- Meeting Room
- Furnished or Unfurnished Available
- EPC Rating: C
- 24h Security
- Cinema & Game Room
- Library
- Concierge Service





Let **UK** Home

Let UK Home
JQ Modern 120 Vyse St
Birmingham
B18 6NF

0121 828 8955

pmadmin@letukhome.co.uk

Council Tax Band: B

Local Authority:

Agents Note: Whilst every care has been taken to prepare these particulars, they are for guidance purposes only. All measurements are approximate and are for general guidance purposes only and whilst every care has been taken to ensure their accuracy, they should not be relied upon and potential buyers/tenants are advised to recheck the measurements.

Energy Efficiency Rating		Current	Potential
Very energy efficient - lower running costs			
(92 plus) A			
(81-91) B			
(69-80) C		73	73
(55-68) D			
(39-54) E			
(21-38) F			
(1-20) G			
Not energy efficient - higher running costs			
England & Wales	EU Directive 2002/91/EC		

<https://www.letukhome.co.uk/>