



Jade Close, London, E16 3TZ

£280,000



Jade Close, London, E16 3TZ

£280,000

Barrain London is pleased to introduce this economical and delightful 1 bedroom garden maisonette with a drive and high quality outbuilding behind! Top choice for first time buyers and commuters! Fully modernised to a high standard!

**** Off street parking!

**** No onward chain!

Enjoy living in a quiet, secluded neighbourhood in green and leafy Beckton – known for its local parks – but at the same time being very close to the eateries and shops in Western Gateway. Conveniently, Tesco, Aldi and ASDA are also just around the corner.

Just ten minutes walk to Royal Albert DLR. station and 15 minutes walk to Elizabeth Line at Custom House, you will enjoy the quick travel times to The City, Canary Wharf, and Stratford – and, indeed, to most places in Greater London whether it's Oxford Circus, Southbank, the West End or Heathrow.

This property is ideal (and a real deal) for commuters, first-time buyers and buy-to-let investors. Arrange your private viewing today.

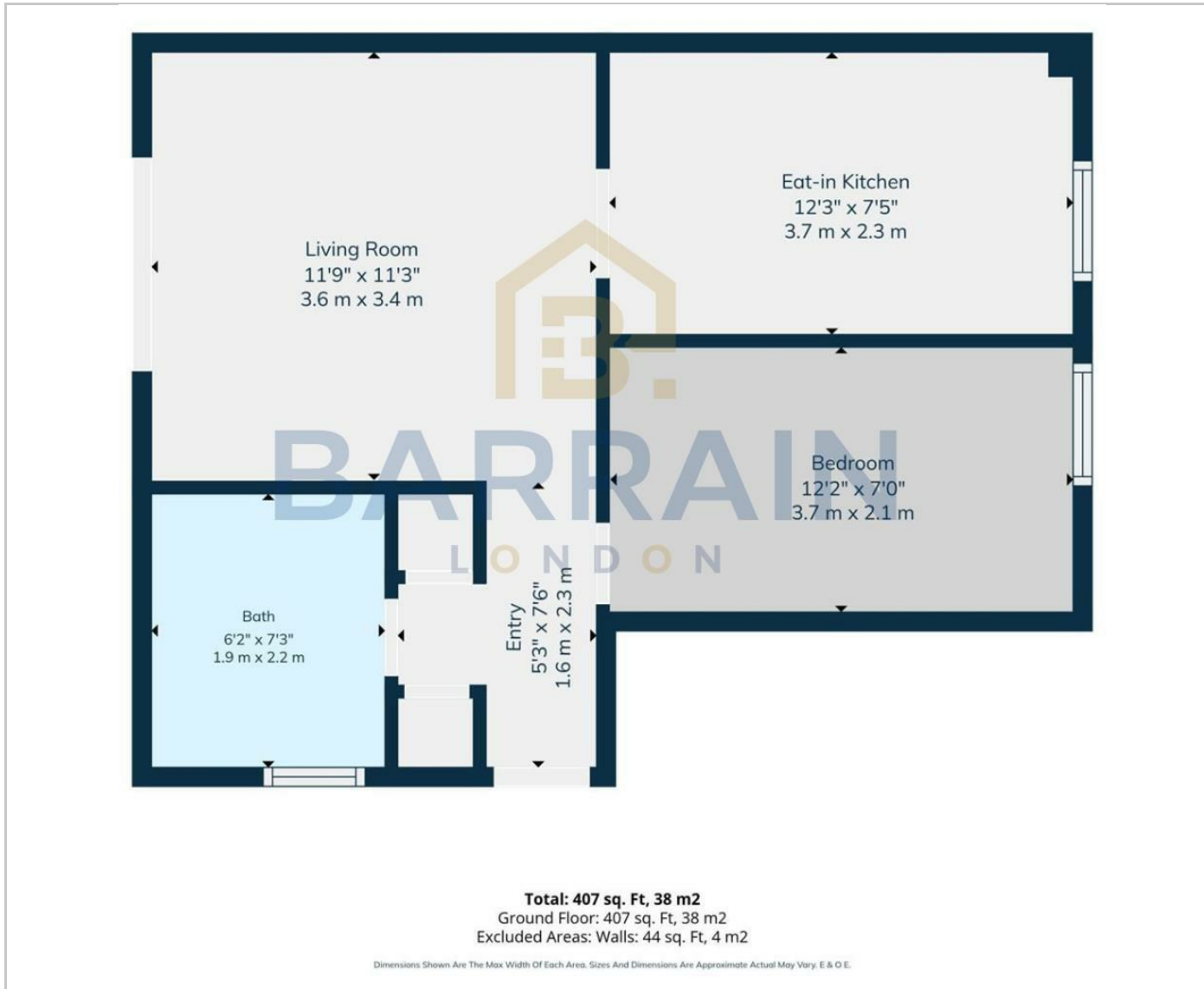
Key Features

- Top flat for first time buyers and commuters: LONG LEASE, LOW CHARGES, NO CHAIN
- Large double bedroom, fully modernised to high standard!
- Garden with decked patio
- Off street parking
- DLR/Elizabeth Line provide fast gateway to the City, the West End, Oxford St. and Heathrow
- In the neighbourhood: Pretty Beckton Park, Western Gateway, ASDA, Tesco and LIDL
- Well connected across London: 10 minute walk to DLR / 15 minute to Elizabeth Line

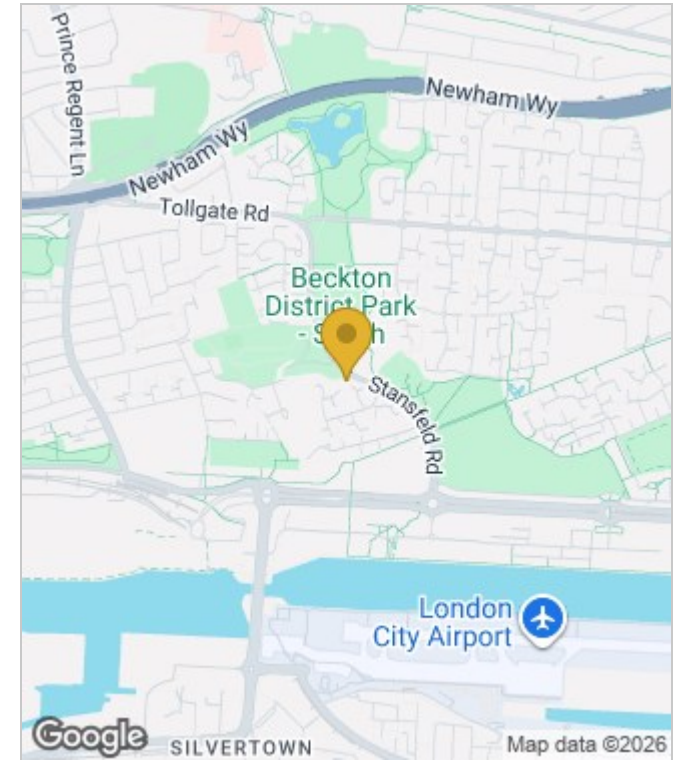


Council Tax Band: B

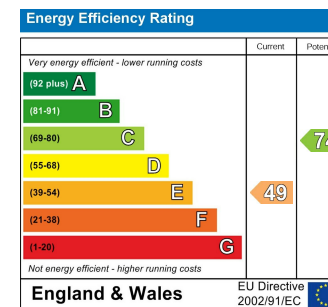
Floor Plans



Area Map



Energy Performance Graph



These particulars, whilst believed to be accurate are set out as a general outline only for guidance and do not constitute any part of an offer or contract. Intending purchasers should not rely on them as statements of representation of fact, but must satisfy themselves by inspection or otherwise as to their accuracy. No person in this firm's employment has the authority to make or give any representation or warranty in respect of the property.