

For Sale



People Make Places



Richmond Buildings, Soho W1

3 bedrooms | 1,162 sq ft

£1,800,000





A well proportioned duplex apartment located in a prime position in the heart of Soho. Finished in a highly contemporary style and offering three en-suite bedrooms and a generous private terrace, this modern loft style home is a rare find in this sought after central London neighbourhood.

What you need to know

- Loft Style Duplex Apartment
- Three Bedrooms
- Three En-Suite Bathrooms
- Private Split-Level Patio Garden
- Modern Development
- Prime Soho Location
- Leasehold - 992 Years
- Service Charge £6521.37 per annum
- Ground Rent £750 per annum
- Westminster Council Tax Band G





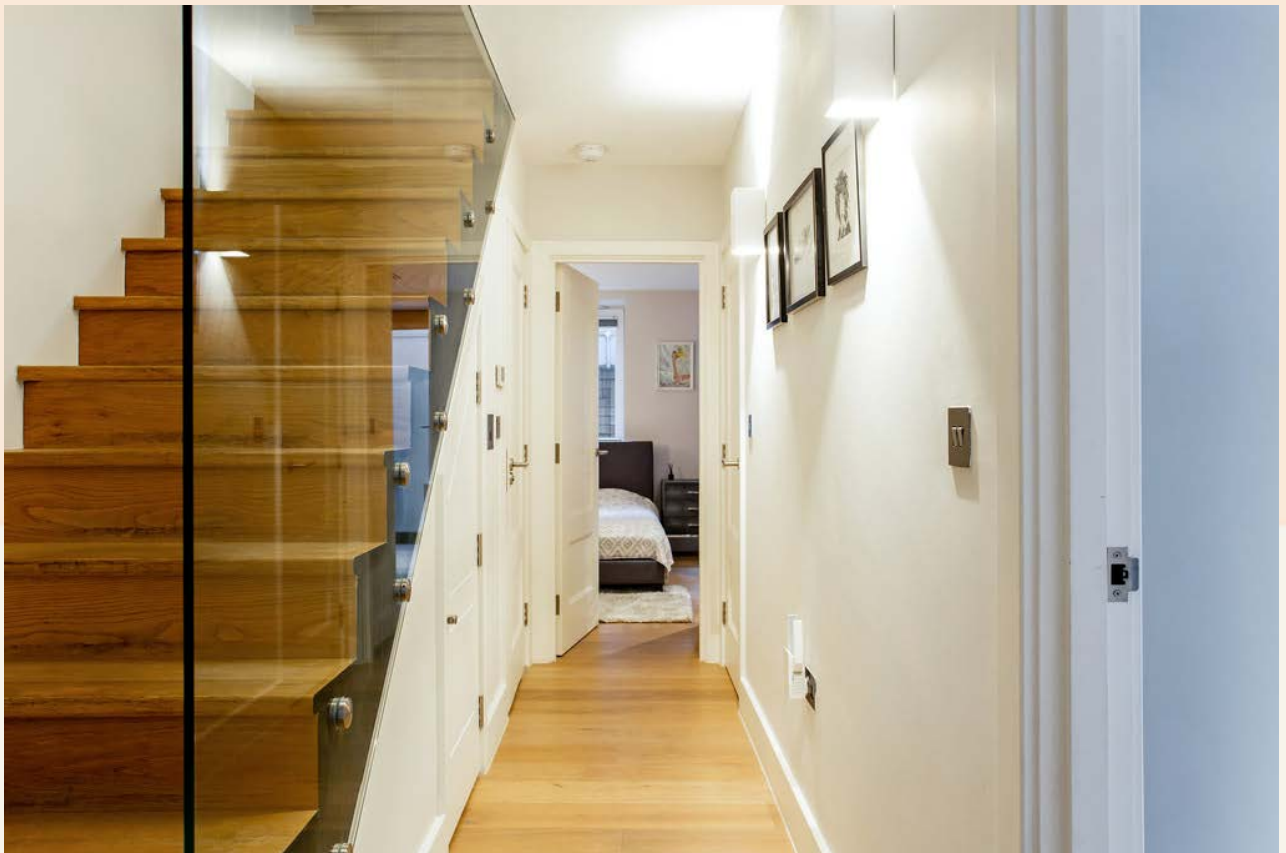
Overview

This stylish Soho home features a contemporary aesthetic throughout, with clean modern lines accentuated by a thoughtfully curated palette of colours and materials including natural timber floors and exposed brick walls, all augmented by well-considered lighting design and a clever use of glass.

A generous open-plan main living space features large windows and a dual aspect, allowing good natural light from either end of the apartment. A beautiful contemporary kitchen with breakfast bar takes centre stage, with separate dining and snug style seating areas creating a space perfect for relaxed living and casual entertaining, ideally suited to this creative quarter of central London.

The further floor provides three en-suite bedrooms, all with bespoke joinery providing ample storage, as well as a guest cloakroom.





Outside you'll find a private split-level patio garden, a calm outdoor space that is a rarity and highly sought-after in such a central location.

Soho is surely the epitome of London life, the beating heart of the West End, a vibrant enclave where history, creativity and a sense of rebellion collide to create a truly original and unrivalled neighbourhood. Globally recognised for its bohemian spirit, Soho has been a haunt for artists, writers, poets and musicians for centuries. Modern Soho is a paradise for creatives, culture vultures, foodies and night owls.

Walk the streets and you can sense the creative energy. Much of the UK film industry is based along Wardour Street, Old Compton Street has been the focal point for London's LGBTQ+ community since the 1970's and Berwick Street boasts a fabulous street food market, not to mention numerous independent record stores, vintage shops and fashion boutiques.





Scratch the surface and you'll discover a genuine neighbourhood, wholly inclusive with lifelong residents who support each other and actively resist the gentrification and homogenisation that has been forced upon many other London districts. It really is one of the few remaining central neighbourhoods with a genuine sense of community.



People Make Places

London is collection of inspiring urban villages and one of the most exciting places in the world to live, work & play.

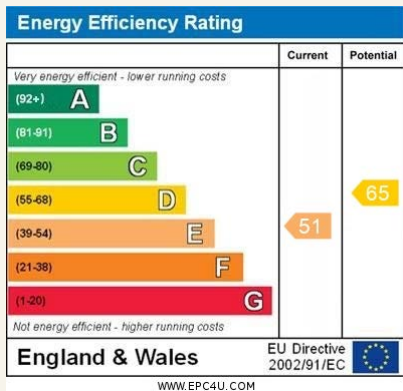
We work with both property owners and their occupiers, sharing the story of these vibrant neighbourhoods, conveying the unique soul & energy to future custodians, the people who'll keep them buzzing.

And unlike many real estate businesses we're not just about buildings, because streets & buildings don't make a neighbourhood.

We're about building relationships, because **people make places**.

MISINTERPRETATION ACT (COPYRIGHT) DISCLAIMER: Tavistock Bow Ltd for themselves and for the vendor(s) of this property whose agents they are, given notice that: 1. These particulars do not constitute, not constitute any part of, an offer or contract. 2. None of the statements contained in these particulars as to the property are to be relied on as statements or representations of fact. 3. Any intending purchaser or lessee must satisfy themselves by inspection or otherwise as to the correctness of each of the statements contained in these particulars. 4. The vendor(s) or lessor(s) do not make or give and neither Tavistock Bow Ltd nor any person in their employment has any authority to make or give any representation or warranty whatever in relation to this property. Finance Act 1989, Unless otherwise stated all prices and rents are quote exclusive of VAT. Property Misrepresentation Act 1991; These details are believed to be correct at the time of compilation but may be subject to subsequent amendment.

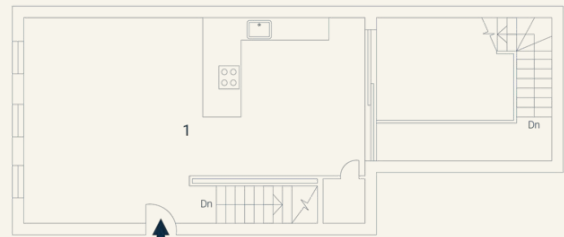
Follow us:     @tavistockbow



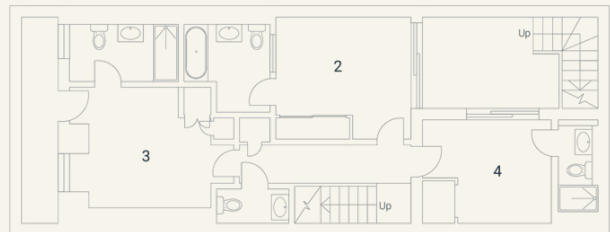
Richmond Buildings, W1

Approximate Gross Internal Area 108 sq m / 1162 sq ft

1 Living /	2 Bedroom	3 Bedroom	4 Office
Kitchen /	3.73 x 3.19M	3.16 x 3.11M	3.41 x 2.69M
Dining	12'3" x 10'6"	10'4" x 10'2"	11'2" x 8'10"
8.96 x 5.35M			
29'5" x 17'7"			



Ground Floor



Lower Ground Floor

Floorplan produced for Tavistock Bow illustration for identification purposes only and not to scale. All measurements are approximate and not to be relied upon.

tavistockbow

21 New Row, Covent Garden,
London, WC2N 4LE

t: 020 7477 2177
e: hello@tavistockbow.com
w: tavistockbow.com



Richmond Buildings, Soho W1