



£450,000

Woodside Avenue, Mansfield,

Welcome to **BuckleyBrown**, where every home is carefully presented, so you can explore with clarity and confidence.

BuckleyBrown
ESTATE AGENTS

"A superb detached bungalow offering stylish open-plan living, beautifully landscaped gardens and immaculate presentation throughout. Ready to move straight into, this exceptional home perfectly combines modern comfort with practical single-storey living, making it an outstanding choice for a wide range of buyers."

- Luke Weaver



A PERFECT BLEND OF COMFORT AND STYLE

Beautifully presented throughout - stunning three-bedroom detached bungalow.

Offering stylish open-plan living, modern finishes and landscaped gardens, all on one convenient level. Designed with both comfort and entertaining in mind, this is a home ready to move straight into and enjoy.



THE FINER DETAILS

Step inside this exceptional three-bedroom detached bungalow and discover a home that perfectly blends contemporary style with practical single-storey living.

Beautifully maintained throughout, this impressive property offers spacious accommodation, modern finishes and a thoughtfully designed layout that will appeal to a wide range of buyers.

The true heart of the home is the stunning open-plan living space to the rear. Combining the living room, dining area and modern kitchen, this bright and sociable space has been cleverly designed to create distinct areas for relaxing, dining and entertaining, whilst maintaining a wonderful sense of openness. Whether enjoying everyday family life or hosting guests, this impressive room provides the perfect backdrop for every occasion.



The bungalow offers three well-proportioned bedrooms, each providing comfortable and versatile accommodation to suit families, couples or those looking for additional space to work from home. Completing the interior is a beautifully appointed modern bathroom, finished to a high standard and perfectly complementing the stylish feel of the property throughout.

Outside, the property continues to impress with a beautifully landscaped rear garden, thoughtfully designed to provide a peaceful and private retreat. A generous patio seating area offers the ideal space for outdoor dining and entertaining, whilst the neatly maintained lawn is bordered by attractive planting and enclosed fencing, creating a safe and tranquil environment to enjoy throughout the seasons.

To the front, the property boasts further kerb appeal with a landscaped garden, gated driveway providing ample off-road parking and access to the garage, offering excellent storage and practicality.

Offering modern single-storey living, generous open-plan accommodation and beautifully maintained gardens, this outstanding bungalow presents a rare opportunity to purchase a home that is ready to enjoy from day one.



BuckleyBrown
ESTATE AGENTS







LIFE BERRY HILL, MANSFIELD

Situated in the highly sought-after Berry Hill area of Mansfield, this property enjoys one of the town's most desirable residential locations. Renowned for its peaceful surroundings, quality homes and excellent amenities, Berry Hill continues to be a favourite with families, professionals and those looking to enjoy a quieter pace of life without compromising on convenience.

Residents benefit from a wide range of nearby amenities, including supermarkets, local shops, cafés, healthcare facilities and leisure centres, all within easy reach. Mansfield town centre is just a short drive away, offering an extensive selection of retail, dining and entertainment options.

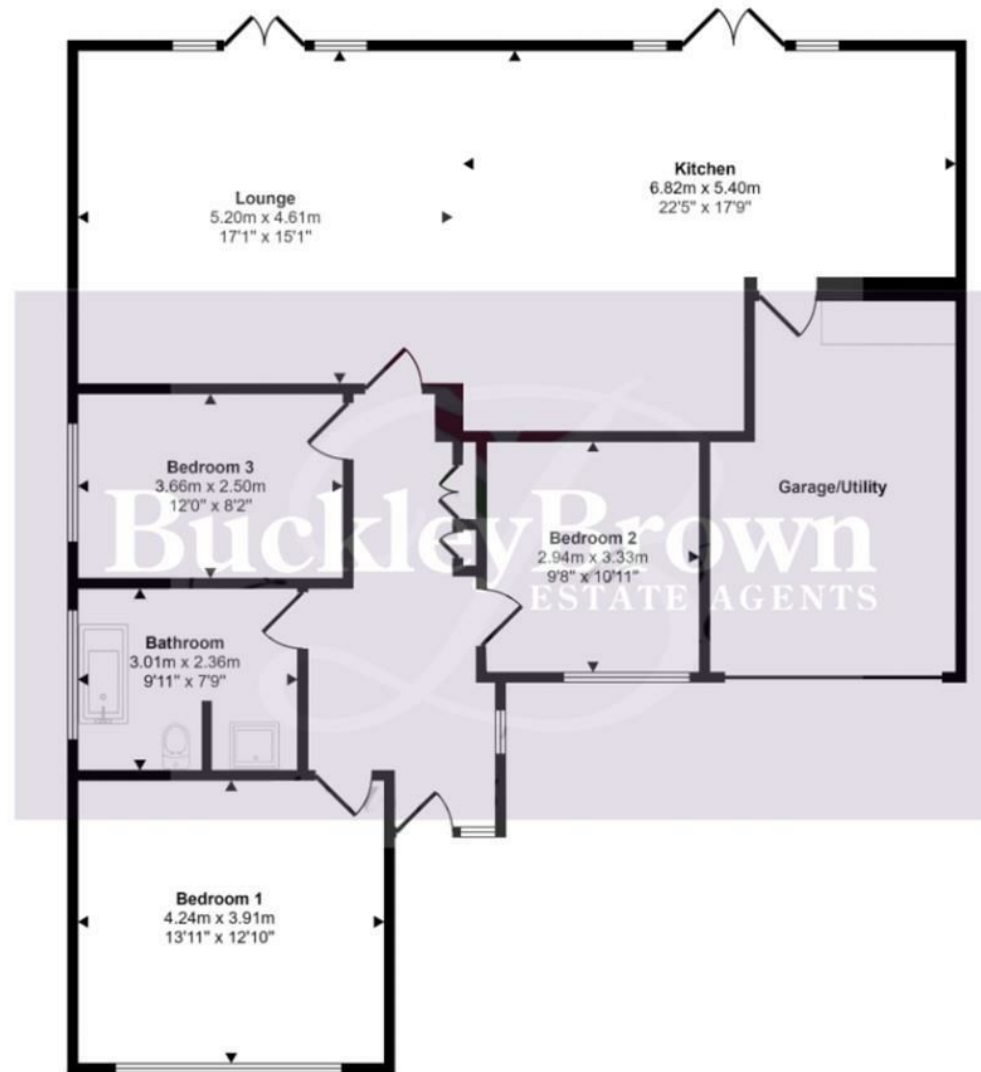
For those who enjoy the outdoors, Berry Hill Park is just moments away, providing beautiful green open spaces, children's play areas and scenic walking routes. The area is also well positioned for access to the surrounding Nottinghamshire countryside, making it ideal for walking, cycling and family days out.

Excellent transport links connect Berry Hill to Mansfield, Nottingham and the wider region, while well-regarded local schools make the area particularly appealing for growing families.

Combining a prestigious location, excellent amenities and an abundance of green open spaces, Berry Hill offers an exceptional lifestyle in one of Mansfield's most desirable neighbourhoods.



Approx Gross Internal Area
131 sq m / 1413 sq ft



Floorplan

This floorplan is only for illustrative purposes and is not to scale. Measurements of rooms, doors, windows, and any items are approximate and no responsibility is taken for any error, omission or mis-statement. Icons of items such as bathroom suites are representations only and may not look like the real items. Made with Made Snappy 360.

Key Features

Beautifully presented detached bungalow

Three well-proportioned bedrooms

Spacious open-plan living, dining and kitchen area

Modern fitted kitchen

Stylish family bathroom

Landscaped front and rear gardens

Gated driveway with ample off-road parking

Garage providing additional storage

Sought-after single-storey living

EPC Rating - C

Council Tax Band - D

BuckleyBrown
ESTATE AGENTS



These particulars are intended as a guide only and do not form part of any offer or contract. All descriptions, measurements, images and plans are provided for illustration purposes and should not be relied upon as statements of fact. Prospective purchasers should satisfy themselves as to the accuracy of the information. Buckley Brown Estate Agents accept no liability for any loss arising from reliance on these details.

© Buckley Brown Estate Agents 2026. All rights reserved.

Exceptional homes deserve
exceptional representation.

Let's Chat.

01623 633633

mansfield@buckleybrown.co.uk

buckleybrown.co.uk

BuckleyBrown
ESTATE AGENTS