



Leigh Road, Worsley, M28

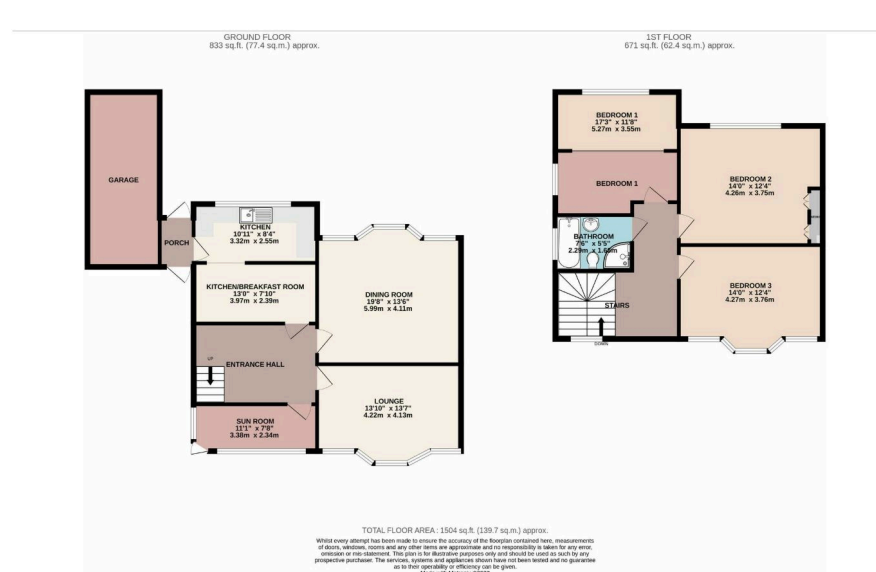
Offers Over £660,000

3 2 1



- Large plot, with substantial front and rear gardens
- Two reception rooms plus sunroom
- Large driveway with ample off-road parking
- Detached garage
- Huge potential to modernise or extend (STPP)
- Three large double bedrooms
- Excellent long-term investment opportunity





Substantial three-bedroom semi-detached home set on a generous plot along the highly sought-after Leigh Road in Worsley. Offering spacious accommodation, expansive gardens, a large driveway and garage, the property presents a fantastic opportunity to modernise, extend or redevelop (subject to planning). Ideal for buyers looking to create a long-term family home or investment on a prime road.