



Price
£375,000

Freehold

2x  1x  1x 

**Lewis Road, Welling,
Kent, DA16**

OVER 60?

Secure this property
for up to **59% less!**

Wards
Helping you move forwards



Main features

- Chain free
- Period style property
- Upstairs family bathroom
- Walking distance to Welling and Bexleyheath train stations
- Potential to extend subject to planning permission

Accommodation

GROUND FLOOR

Entrance Hall

Lounge: 13'7 x 9'8 (4.14m x 2.95m)

Kitchen/Diner: (L-shaped) 14'1 x 7'3 (4.30m x 2.21m) plus 11'9 x 8'4 (3.58m x 2.54m)

TOP FLOOR

Landing

Bedroom 1: 13'3 x 11'4 (4.04m x 3.46m)

Bedroom 2: 11'8 x 8'2 (3.56m x 2.49m)

Bathroom

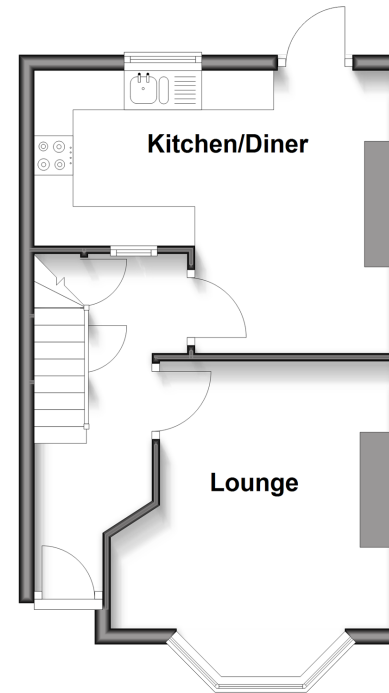
OUTSIDE

Front Garden

Rear Garden

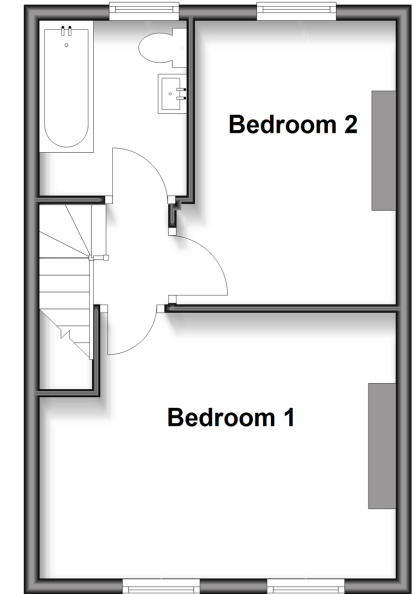
Ground Floor

Approx. 32.5 sq. metres (349.5 sq. feet)



First Floor

Approx. 32.7 sq. metres (351.7 sq. feet)



Call Welling - 020 8301 6679 ■ wardsof Kent.co.uk

- Legal advice should be taken to verify fixtures/fittings, planning, alterations and/or lease details
- Appliances & services are untested, dimensions are approximate and floor plans are not to scale
- Through a Homewise Home For Life Plan people aged 60+ can secure this property for up to 50% less, by purchasing a Lifetime Lease.



15009263/20250906/LK/NB