



**Guide Price**  
**£375,000**

**Freehold**

3x  1x  2x 

**Haslar Crescent,  
Waterlooville,  
Hampshire, PO7**

**cubitt&west**  
Helping you move forwards





## Main features

- Stylish open plan kitchen/dining area
- Situated on the ever popular berg estate
- Low maintenance sunny aspect rear garden
- Offered with no forward chain
- Close to local shops and amenities

## Accommodation

### GROUND FLOOR

Entrance Hall

Lounge: 15'8 x 11'4 (4.78m x 3.46m)

Dining Room: 13'4 x 11'4 (4.07m x 3.46m)

Kitchen/Dining Area: 19'8 x 9'3 (6.00m x 2.82m)

Conservatory: 12'8 x 10'4 (3.86m x 3.15m)

Utility Room: 9'2 x 5'5 (2.80m x 1.65m)

### FIRST FLOOR

Landing

Bedroom 1: 14'0 x 11'5 (4.27m x 3.48m)

Bedroom 2: 13'3 x 10'0 (4.04m x 3.05m)

Bedroom 3: 10'1 x 8'3 (3.08m x 2.52m)

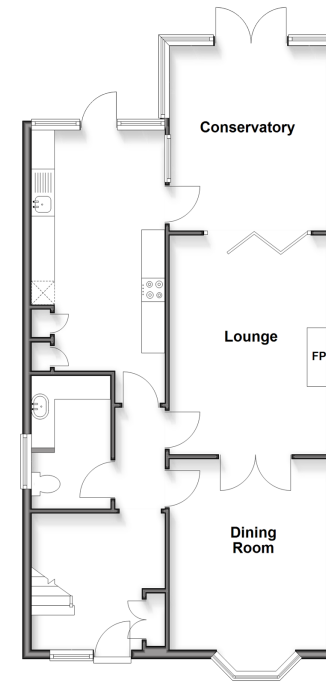
Bathroom

### OUTSIDE

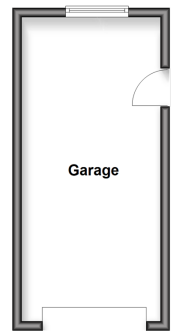
Rear Garden

Garage and Off Road Parking

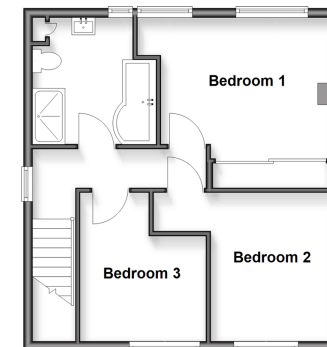
**Ground Floor**  
Approx. 77.9 sq. metres (838.7 sq. feet)



**Outbuilding**  
Approx. 19.4 sq. metres (209.3 sq. feet)



**First Floor**  
Approx. 44.6 sq. metres (479.8 sq. feet)



**Call Waterloo - 02392 267244 ■ [cubittandwest.co.uk](http://cubittandwest.co.uk)**

- Legal advice should be taken to verify fixtures/fittings, planning, alterations and/or lease details
- Appliances & services are untested, dimensions are approximate and floor plans are not to scale



42410842/20251230/RW/EC